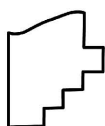
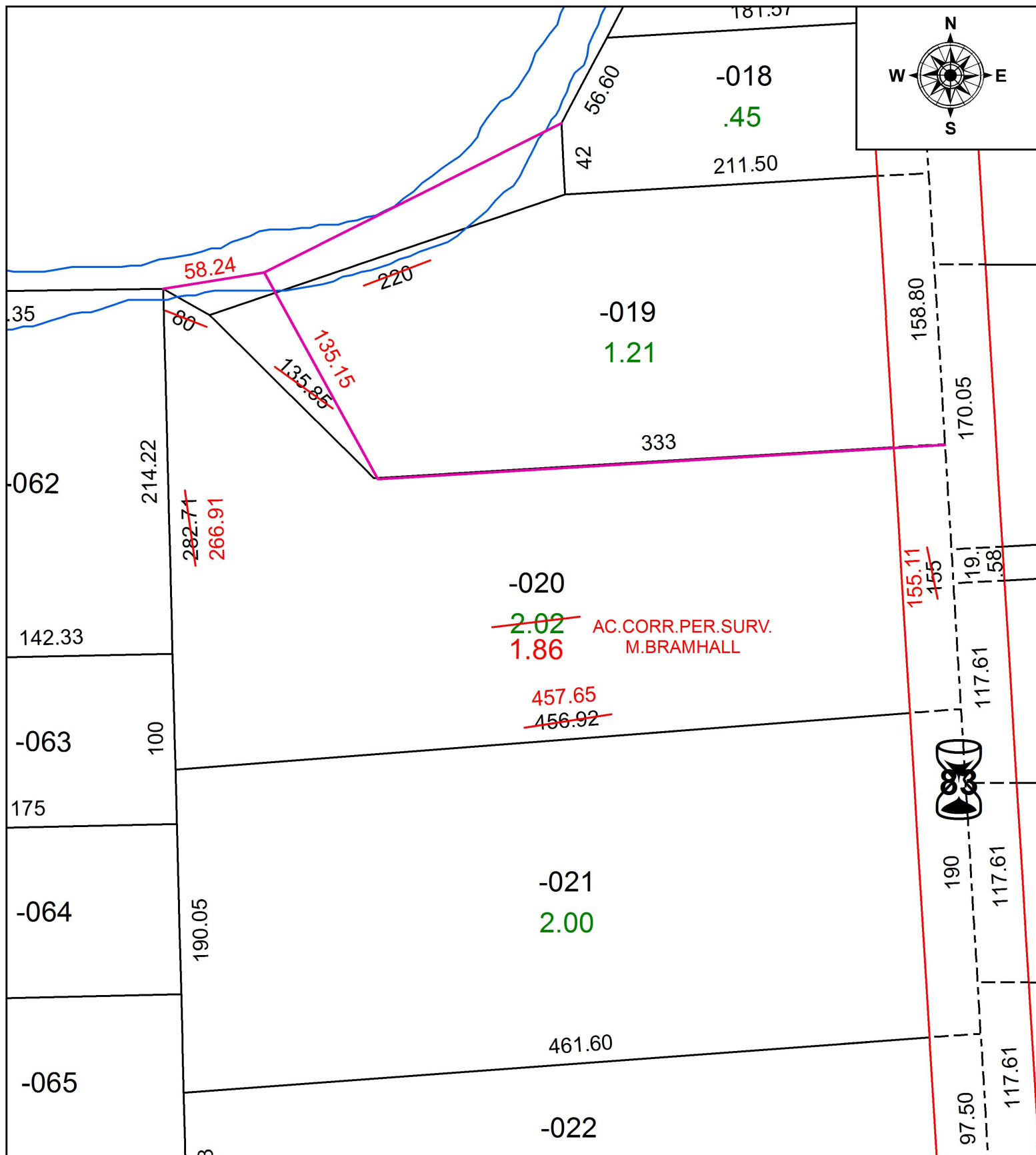


PARENT PARCEL: 04-00-014-104-020

CHILD PARCEL: XX-XX-XXX-XXX-XXX

STARTING POINT: INTERSECTION OF C/L OF S.R.83 AND NORTH LINE OF SEC.14

16-03435-D



SPLITS/DEEDS PROCESSED
 LORAIN COUNTY TAX MAP DEPARTMENT
 226 MIDDLE AVE. ELYRIA, OH

SURVEYED BY: MICHAEL C. BRAMHALL
 CLOSURE: 1:259,683
 MAP PAGE(S): 4-00-014
 APPROVED BY: RRM DATE: 4-22-16
 SCALE: 1" = 75' PRIOR INSTRUMENT: 20080239701