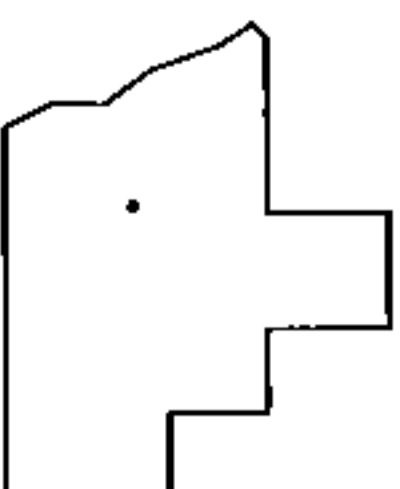
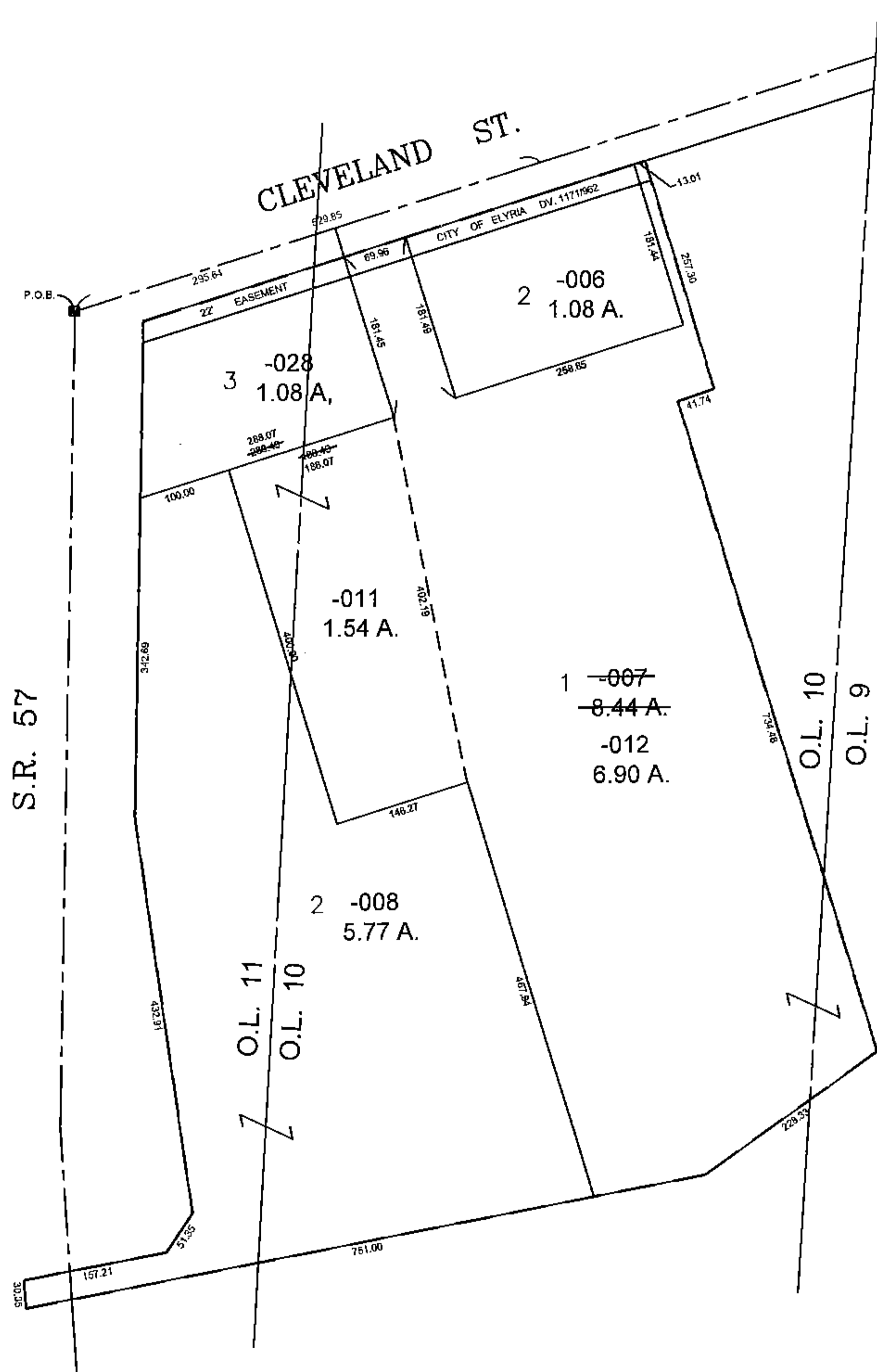
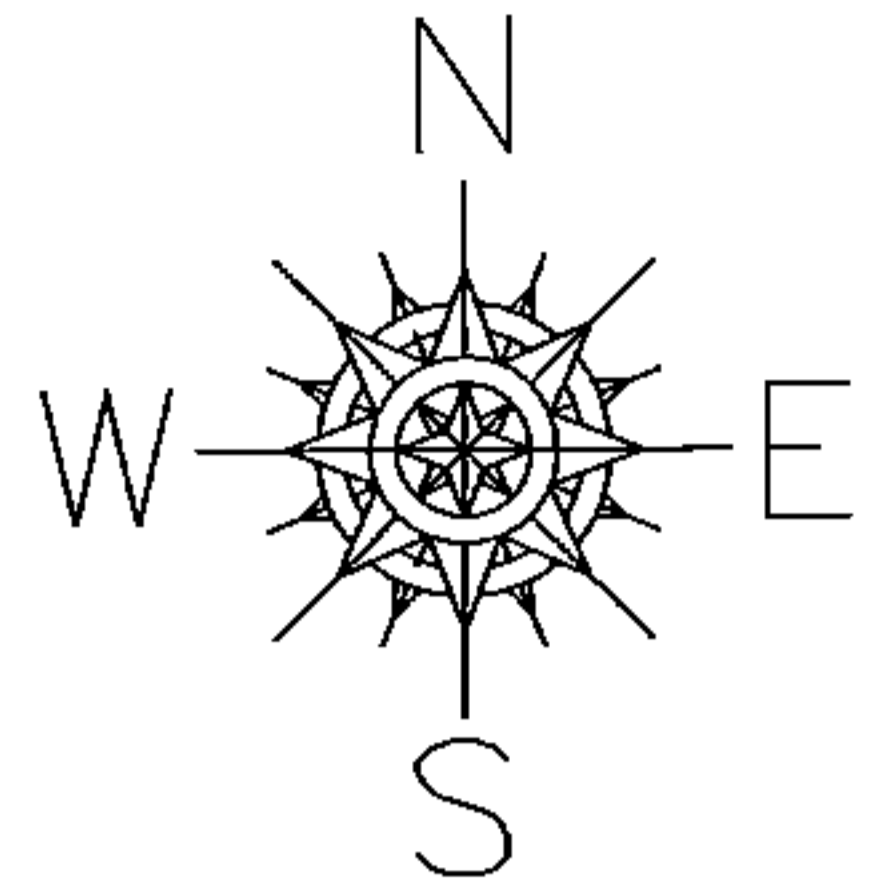


PARENT PARCEL: 06-25-010-101-007

CHILD PARCEL: 06-25-010-101-011 & -012

STARTING POINT: I.P. MON. BOX, CL OF S.R. 57 & CL OF CLEVELAND ST.

15-03427



SPLITS/DEEDS PROCESSED
 LORAIN COUNTY TAX MAP DEPARTMENT
 226 MIDDLE AVE. ELYRIA, OHIO

SURVEYED BY: THOMAS A. SIMON
 CLOSURE: 0.01 : 10,000
 MAP PAGE(S): 06-25-010
 APPROVED BY: TJS DATE: 10/1/15
 SCALE: 1" = 200 PRIOR INSTRUMENT: 20110383580