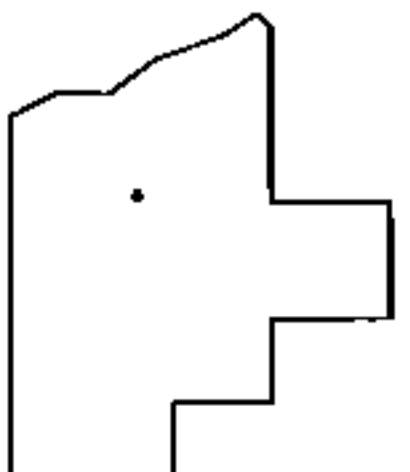
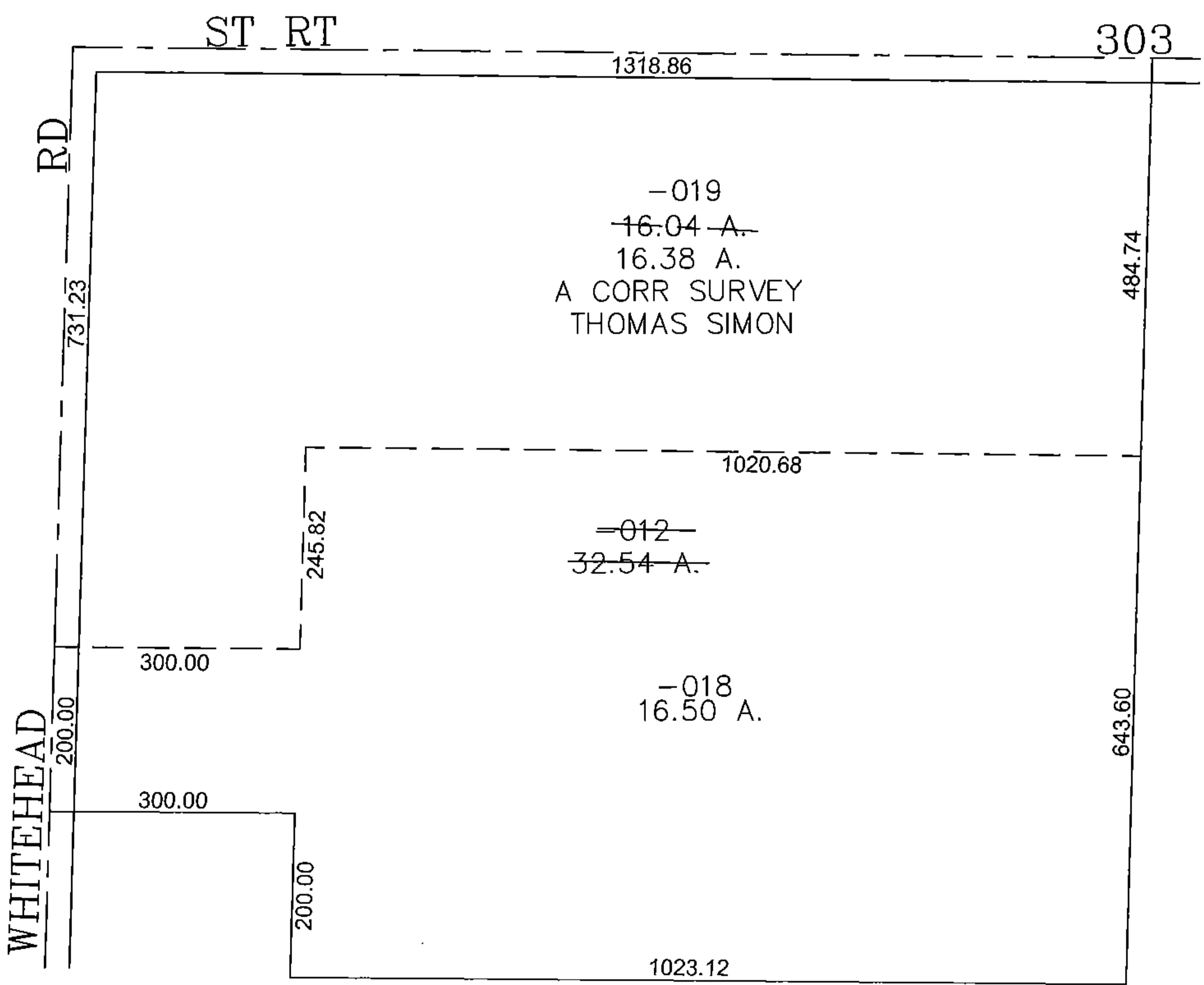
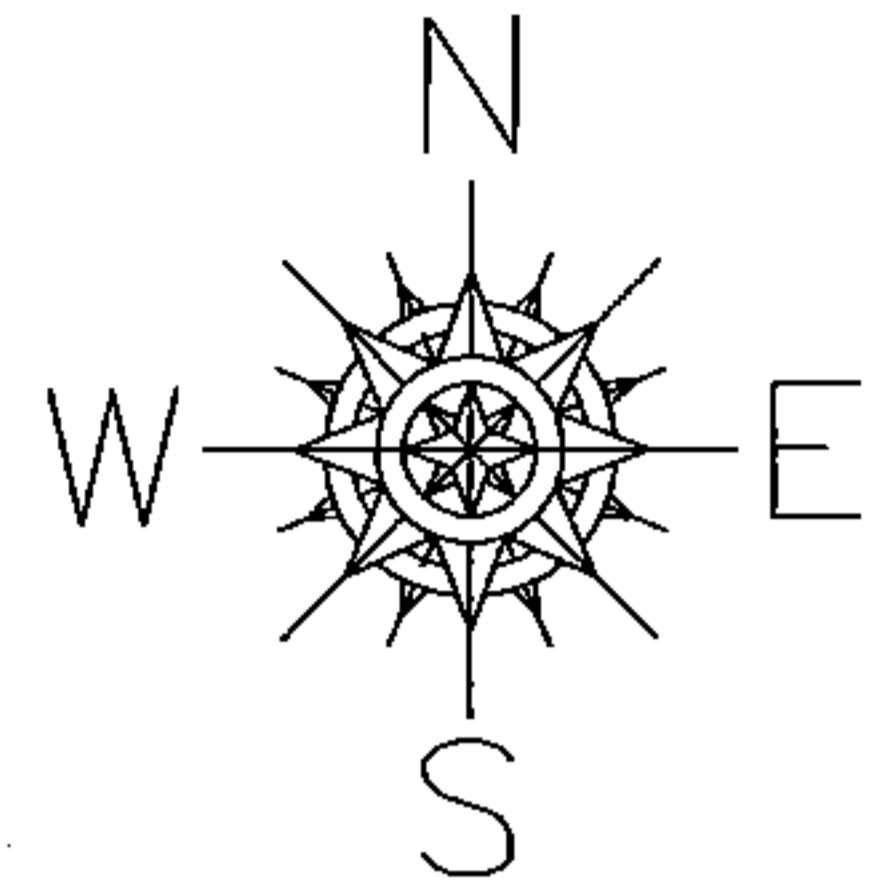


PARENT PARCEL: 15-00-057-000-012

CHILD PARCEL: 15-00-057-000-018, -019

STARTING POINT: CENTERLINE OF WHITEHEAD RD & ST RT 303

15-03426



SPLITS/DEEDS PROCESSED
 LORAIN COUNTY TAX MAP DEPARTMENT
 226 MIDDLE AVE. ELYRIA, OHIO

SURVEYED BY: THOMAS SIMON
 CLOSURE: 0.00 : 10,000
 MAP PAGE(S): 15-F
 APPROVED BY: JAH DATE: 9/25/2015
 SCALE: 1" = 200' PRIOR INSTRUMENT: 20150534576