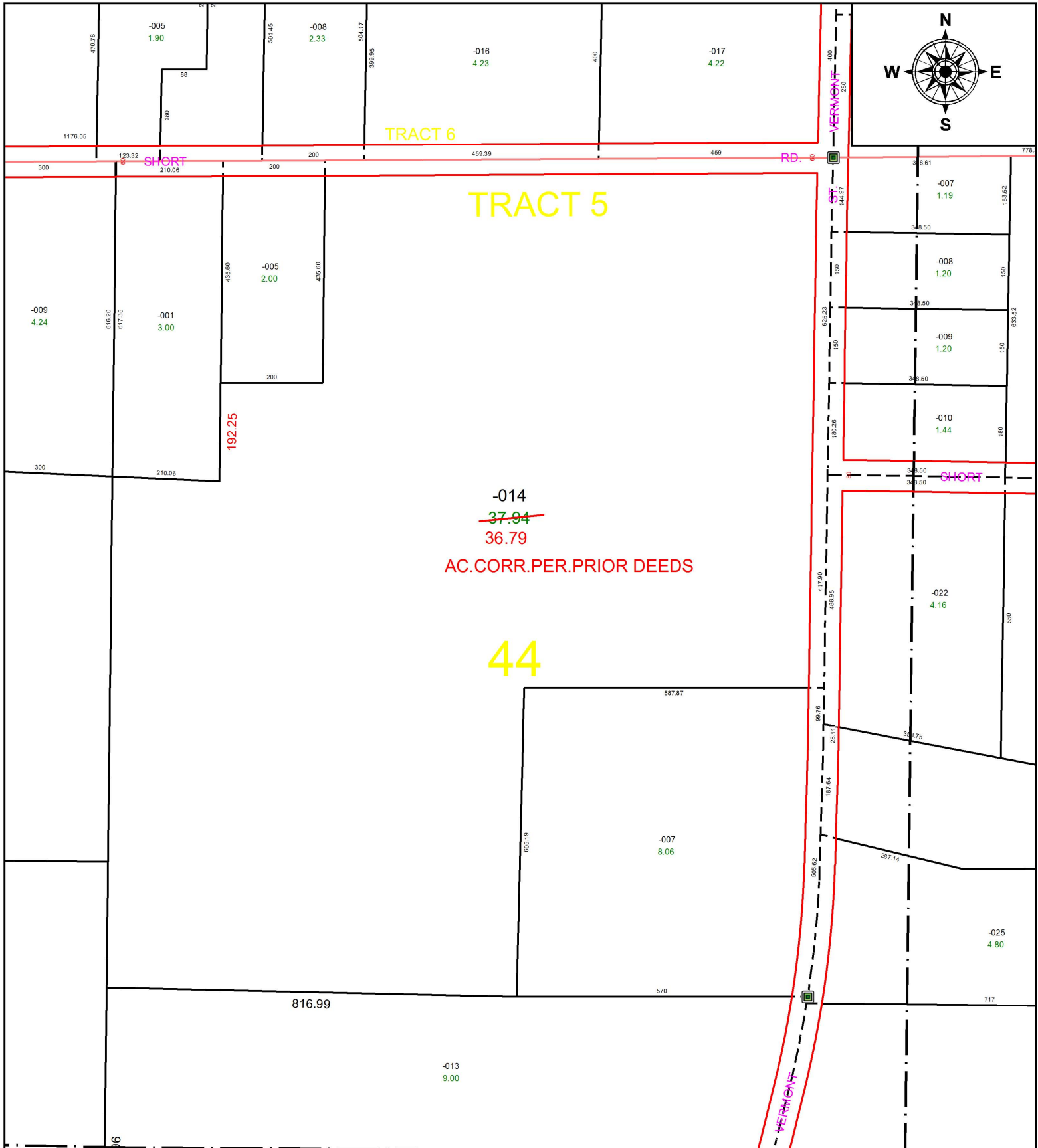


PARENT PARCEL: 19-05-044-000-014

CHILD PARCEL: XX-XX-XXX-XXX-XXX

STARTING POINT: INTERSECTION OF C/L OF SHORT RD. AND C/L OF VERMONT ST.

16-03425-C



**SPLITS/DEEDS PROCESSED**  
 LORAIN COUNTY TAX MAP DEPARTMENT  
 226 MIDDLE AVE. ELYRIA, OH

SURVEYED BY: \_\_\_\_\_ N/A  
 CLOSURE: \_\_\_\_\_ N/A  
 MAP PAGE(S): \_\_\_\_\_ 19-D  
 APPROVED BY: \_\_\_\_\_ RRM DATE: \_\_\_\_\_ 4-18-16  
 SCALE: \_\_\_\_\_ 1" = 250 \_\_\_\_\_ PRIOR INSTRUMENT: \_\_\_\_\_ 20160582210