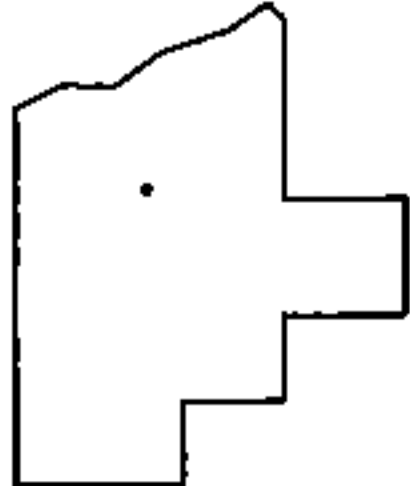
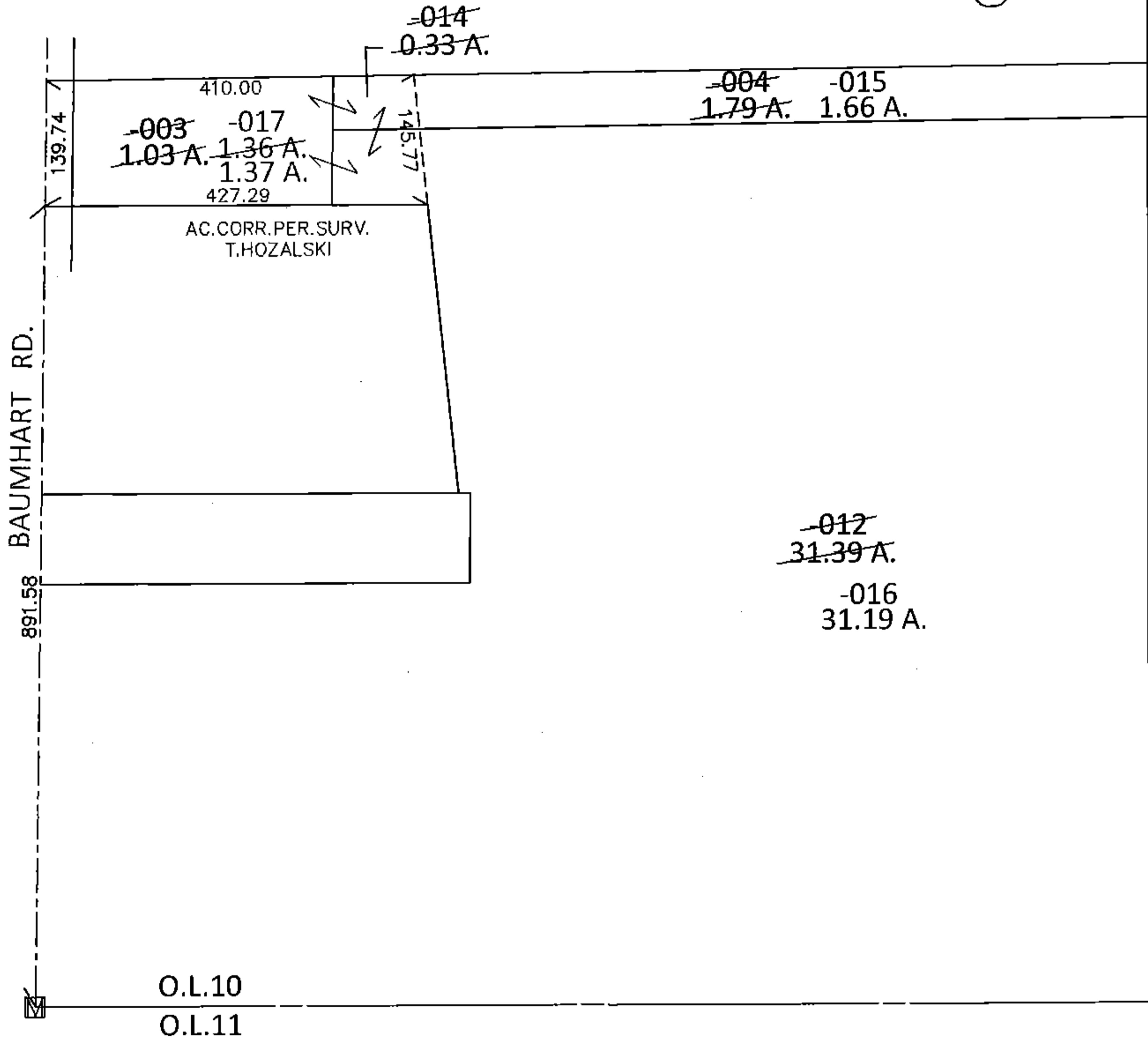
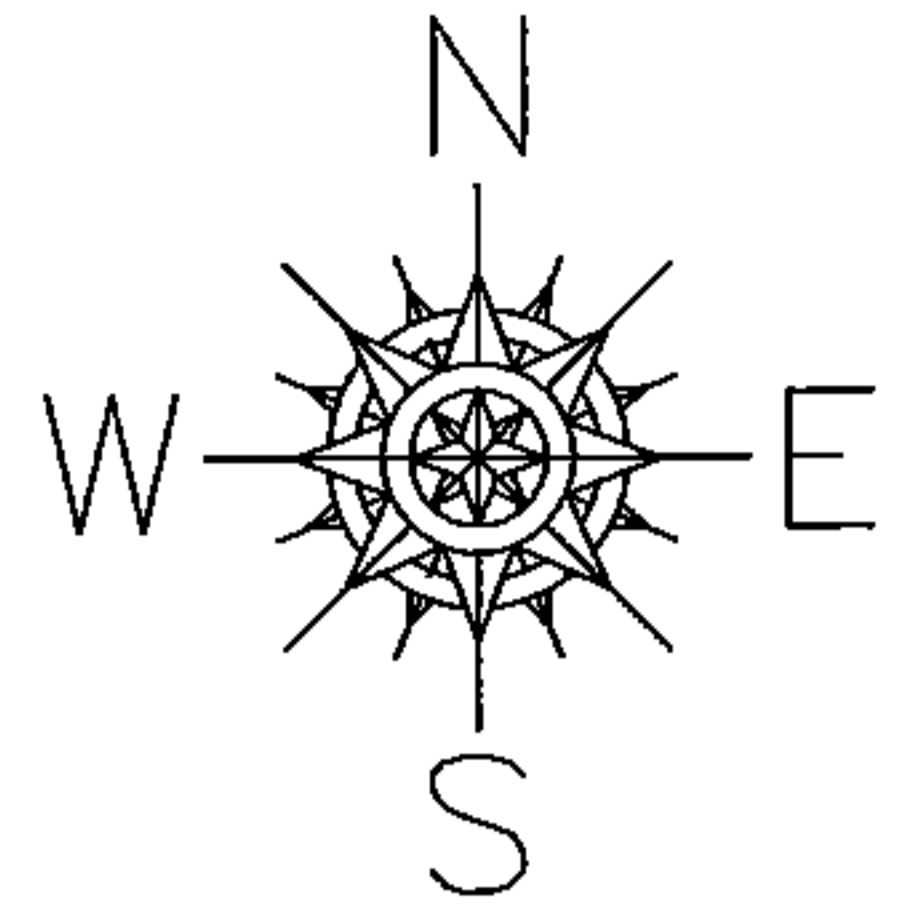


PARENT PARCEL: 08-13-010-000-003, -004, -012
CHILD PARCEL: 08-13-010-000-014 THRU -017
STARTING POINT: INTSECTON OF C/L OF BAUMHART RD. AND SOUTH LINE OF O.L.10

15-03423



SPLITS/DEEDS PROCESSED

LORAIN COUNTY TAX MAP DEPARTMENT
226 MIDDLE AVE. ELYRIA, OHIO

SURVEYED BY: TIMOTHY D. HOZALSKI
CLOSURE: .01:10,000
MAP PAGE(S): 8-H
APPROVED BY: RRM DATE: 9-17-15
SCALE: 1"= 200 PRIOR INST.: 20140509635