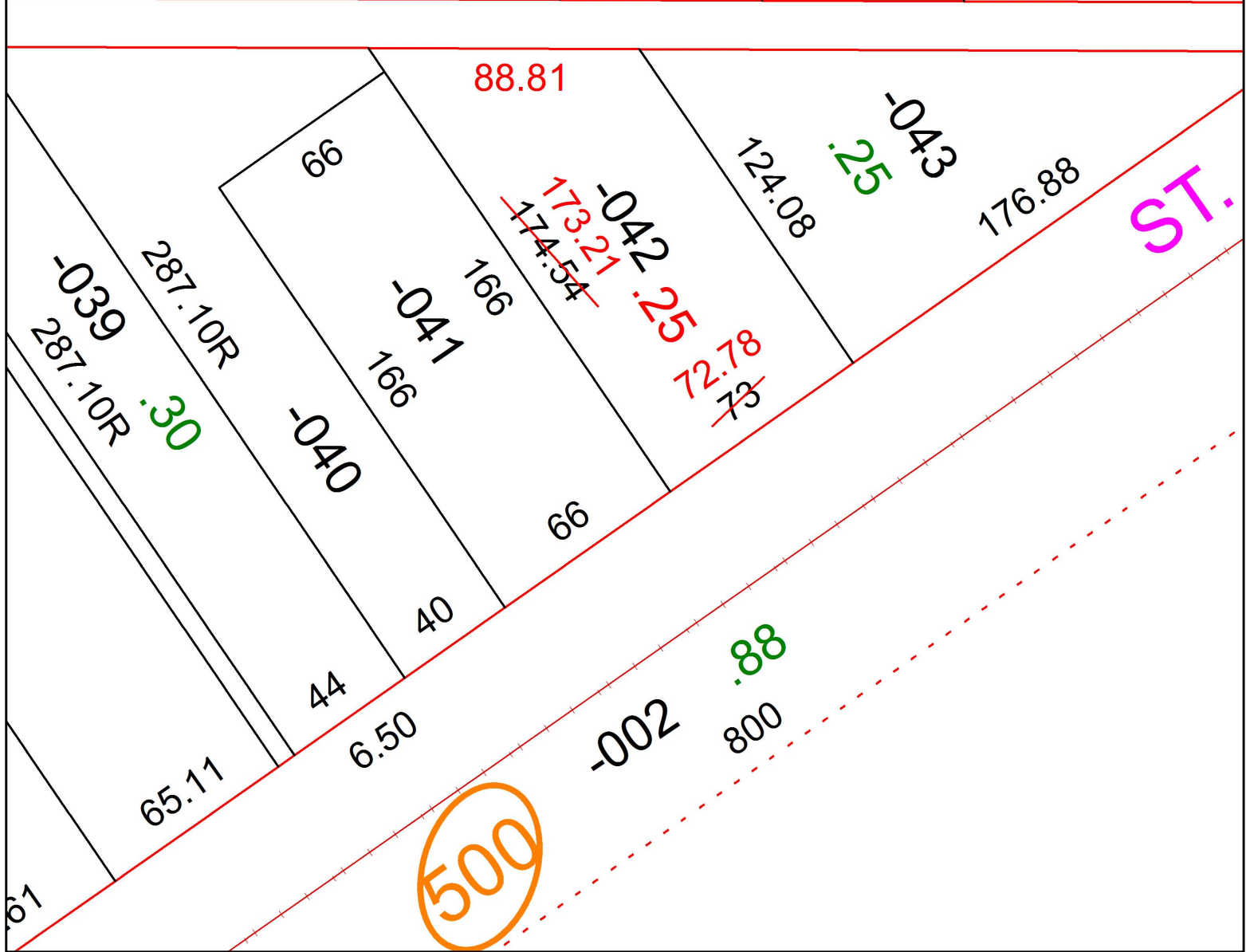
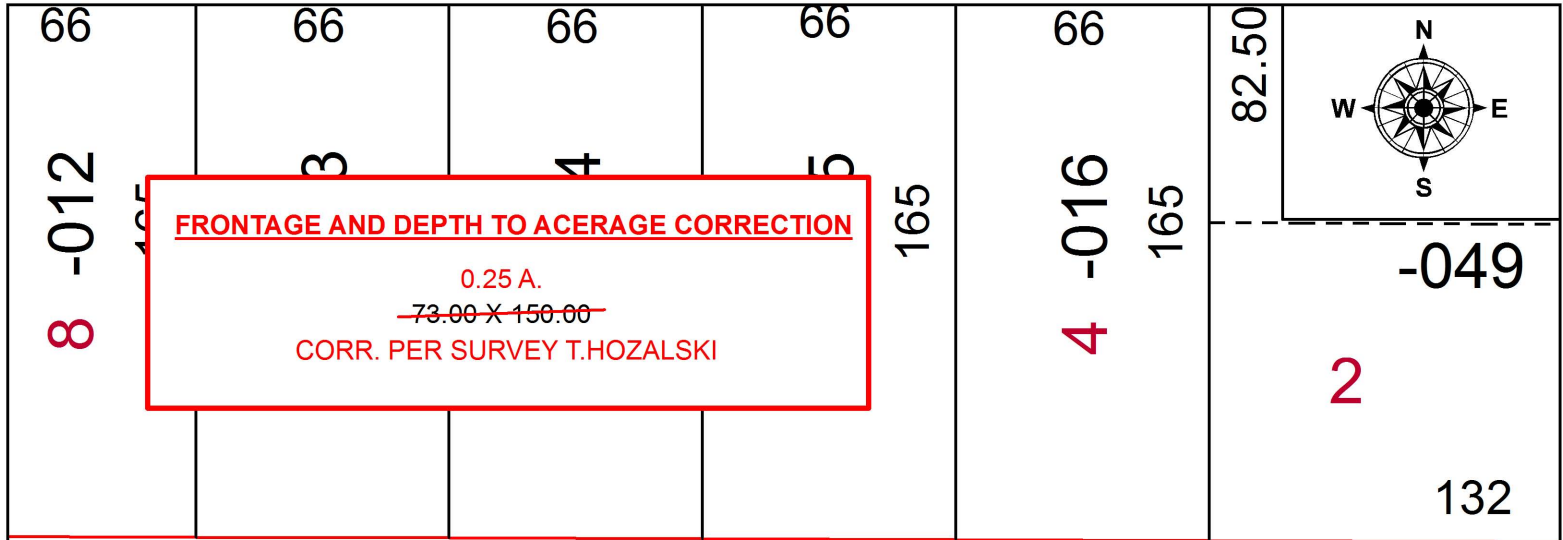


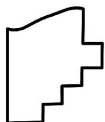
PARENT PARCEL: 11-00-081-102-042

CHILD PARCEL: XX-XX-XXX-XXX-XXX

STARTING POINT: INTERSECTION OF THE NORTHWEST LINE OF CLEVELAND ST. AND SOUTH LINE OF BARCHARD ADD.

16-03419-D



 **SPLITS/DEEDS PROCESSED**
 LORAIN COUNTY TAX MAP DEPARTMENT
 226 MIDDLE AVE. ELYRIA, OH

SURVEYED BY: TIMOTHY D. HOZALSKI
 CLOSURE: 1: 98,663
 MAP PAGE(S): 11-00-081
 APPROVED BY: RRM DATE: 4-7-16
 SCALE: 1" = 50 PRIOR INSTRUMENT: 20000689697