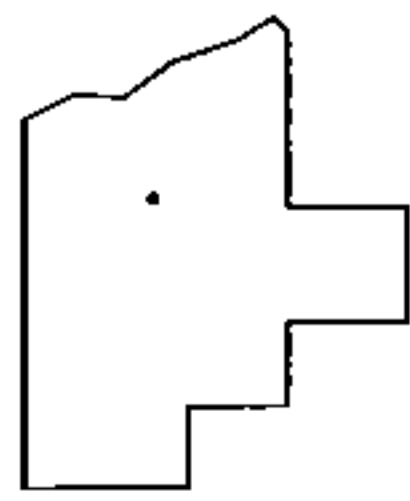
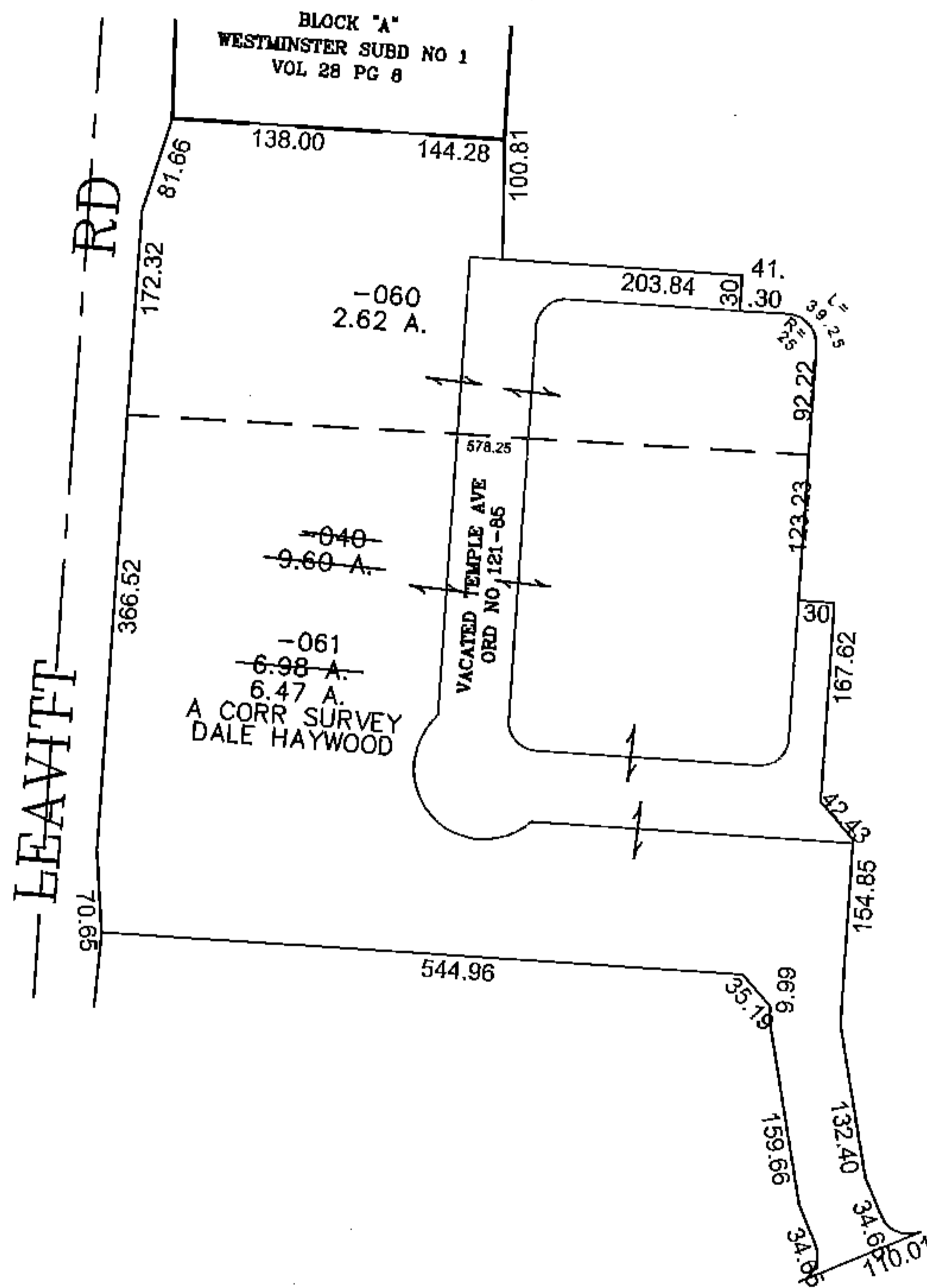
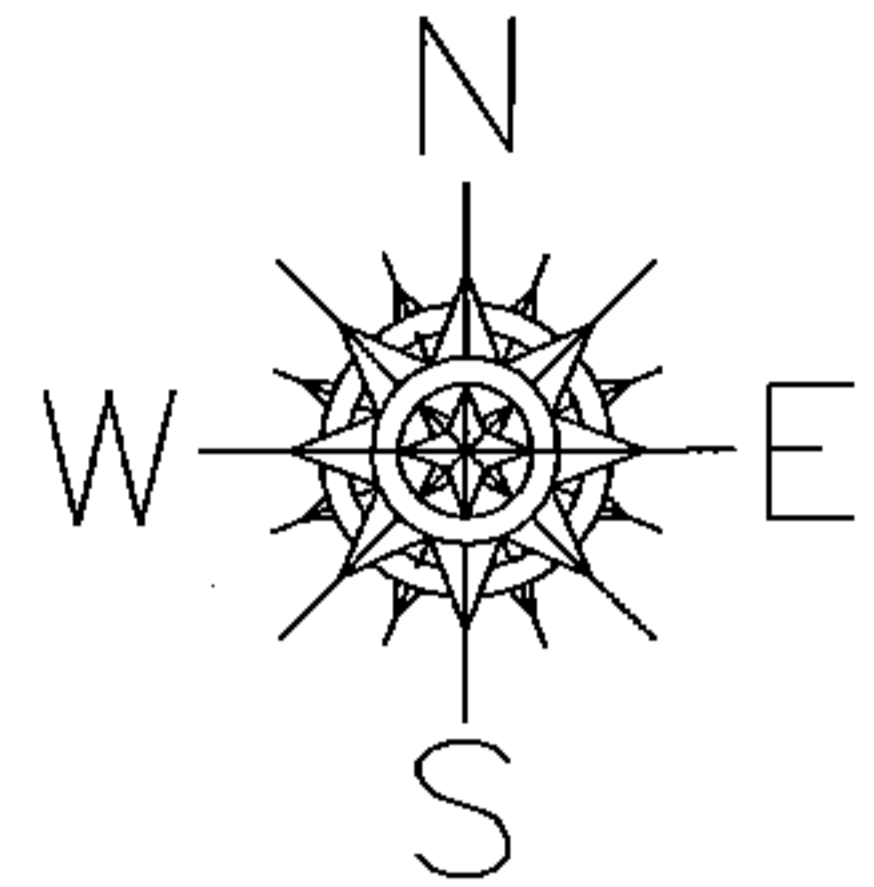


PARENT PARCEL: 02-02-007-101-040

CHILD PARCEL: 02-02-007-101-060, -061

STARTING POINT: SIDELINE OF LEAVITT RD & SOUTHWEST CORNER OF BLOCK "A" IN SUBD.

15-03418



SPLITS/DEEDS PROCESSED

LORAIN COUNTY TAX MAP DEPARTMENT
226 MIDDLE AVE. ELYRIA, OHIO

SURVEYED BY: DALE HAYWOOD

CLOSURE: 0.00 : 10.000

MAP PAGE(S): 02-02-007-A

APPROVED BY: JAH DATE: 9/8/2015

SCALE: 1" = 200 PRIOR INSTRUMENT: 20080241064