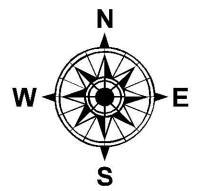
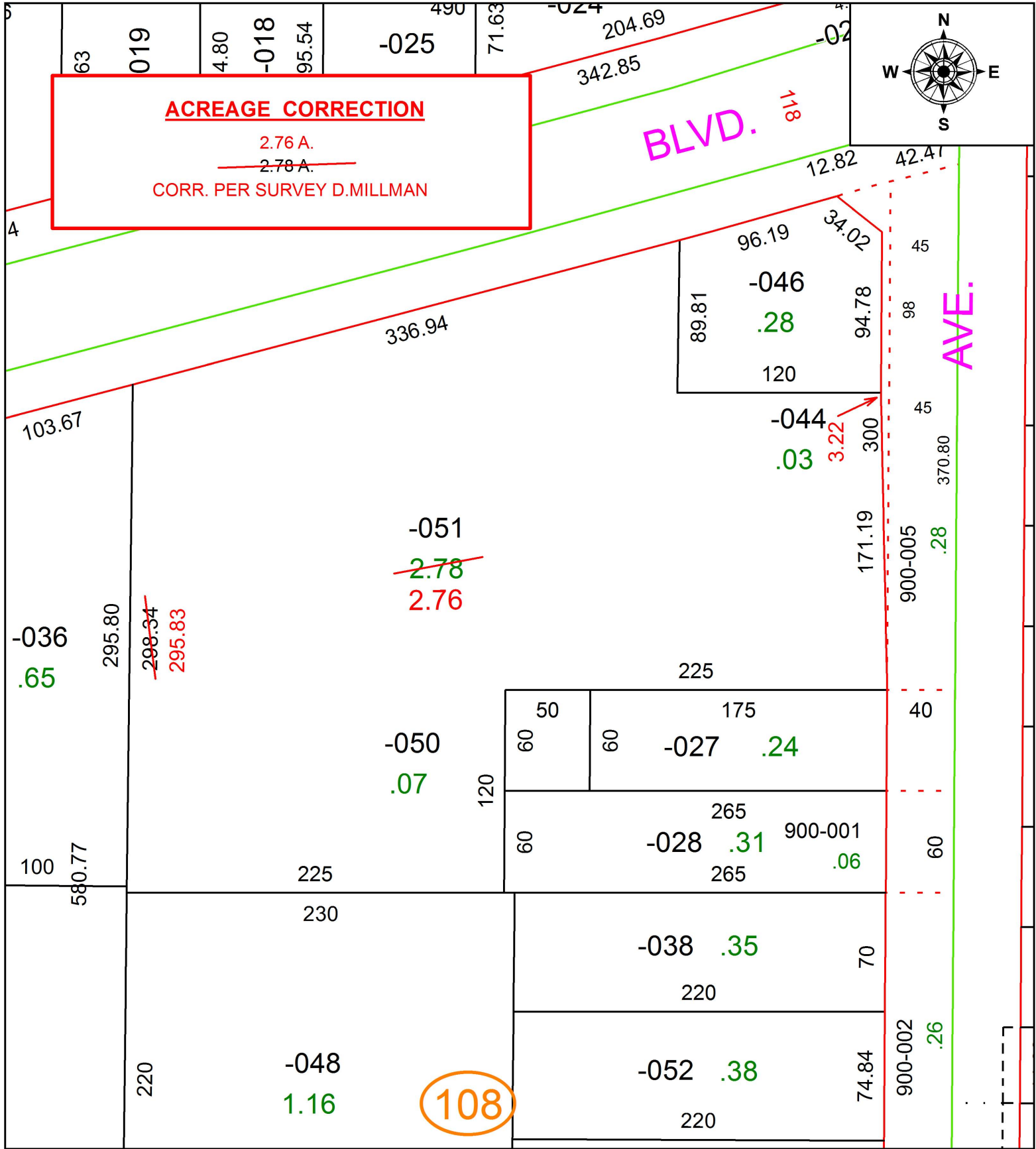


PARENT PARCEL: 02-02-006-108-051

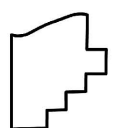
CHILD PARCEL: XX-XX-XXX-XXX-XXX

STARTING POINT: INTERSECTION OF C/L OF TOWER BLVD. AND C/L OF OBERLIN AVE.

16-03415-X



108



SPLITS/DEEDS PROCESSED
 LORAIN COUNTY TAX MAP DEPARTMENT
 226 MIDDLE AVE. ELYRIA, OH

SURVEYED BY: DERON J. MILLMAN
 CLOSURE: 1:199,911
 MAP PAGE(S): 2-02-006
 APPROVED BY: RRM DATE: 4-7-16
 SCALE: 1" = 75' PRIOR INSTRUMENT: 20140523077