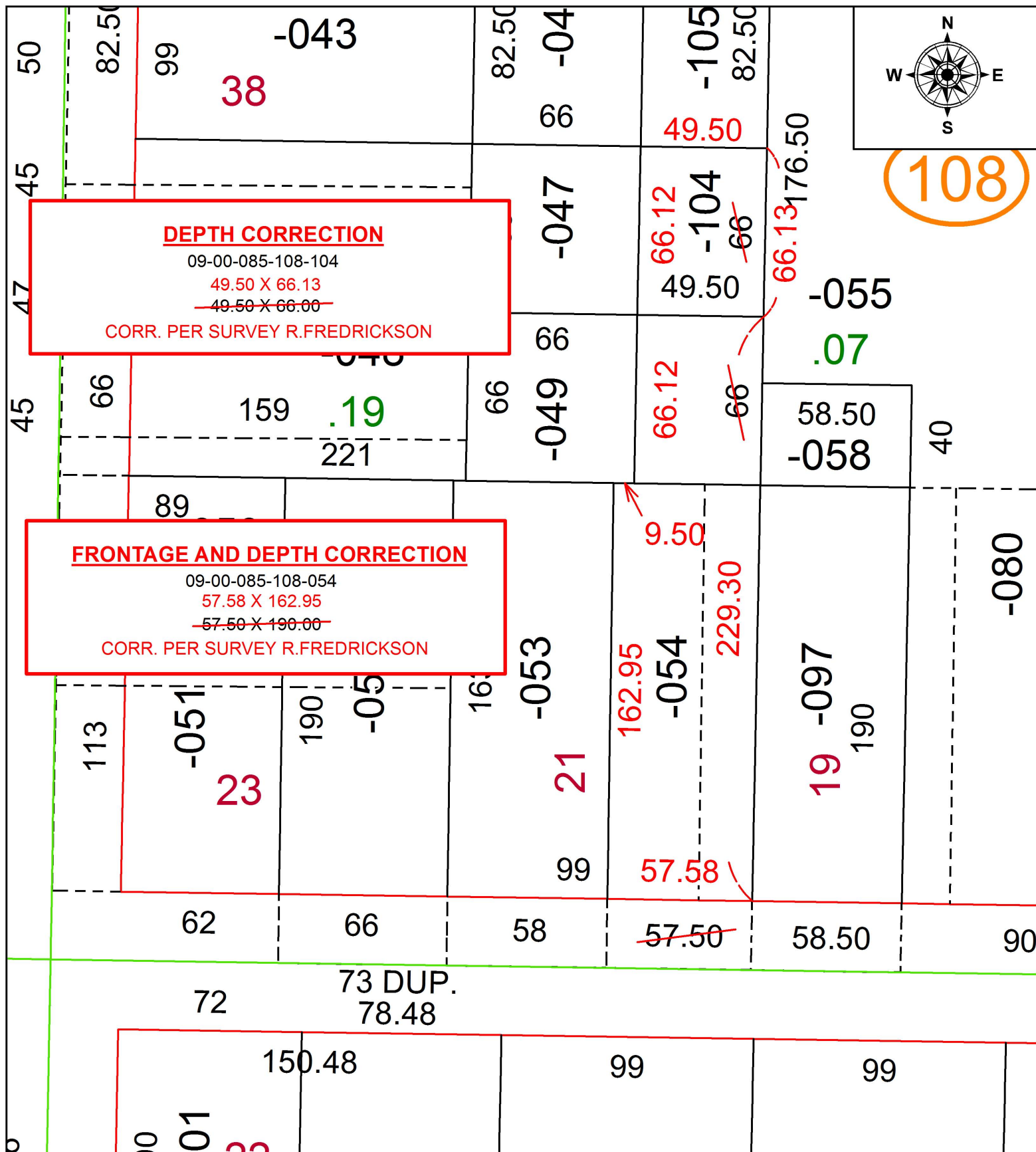


PARENT PARCEL: 09-00-085-108-054, -055, -104

CHILD PARCEL: XX-XX-XXX-XXX-XXX

STARTING POINT: INTERSECTION OF C/L OF FOREST ST. AND C/L OF CEDAR AVE.

16-03409-D



SPLITS/DEEDS PROCESSED
LORAIN COUNTY TAX MAP DEPARTMENT
226 MIDDLE AVE. ELYRIA, OH

SURVEYED BY:	RICHARD A. FREDRICKSON		
CLOSURE:	1:80,093		
MAP PAGE(S):	9-00-085		
APPROVED BY:	RRM	DATE:	4-5-16
SCALE:	1" = 50	PRIOR INSTRUMENT:	20020838695