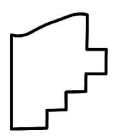
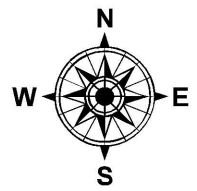
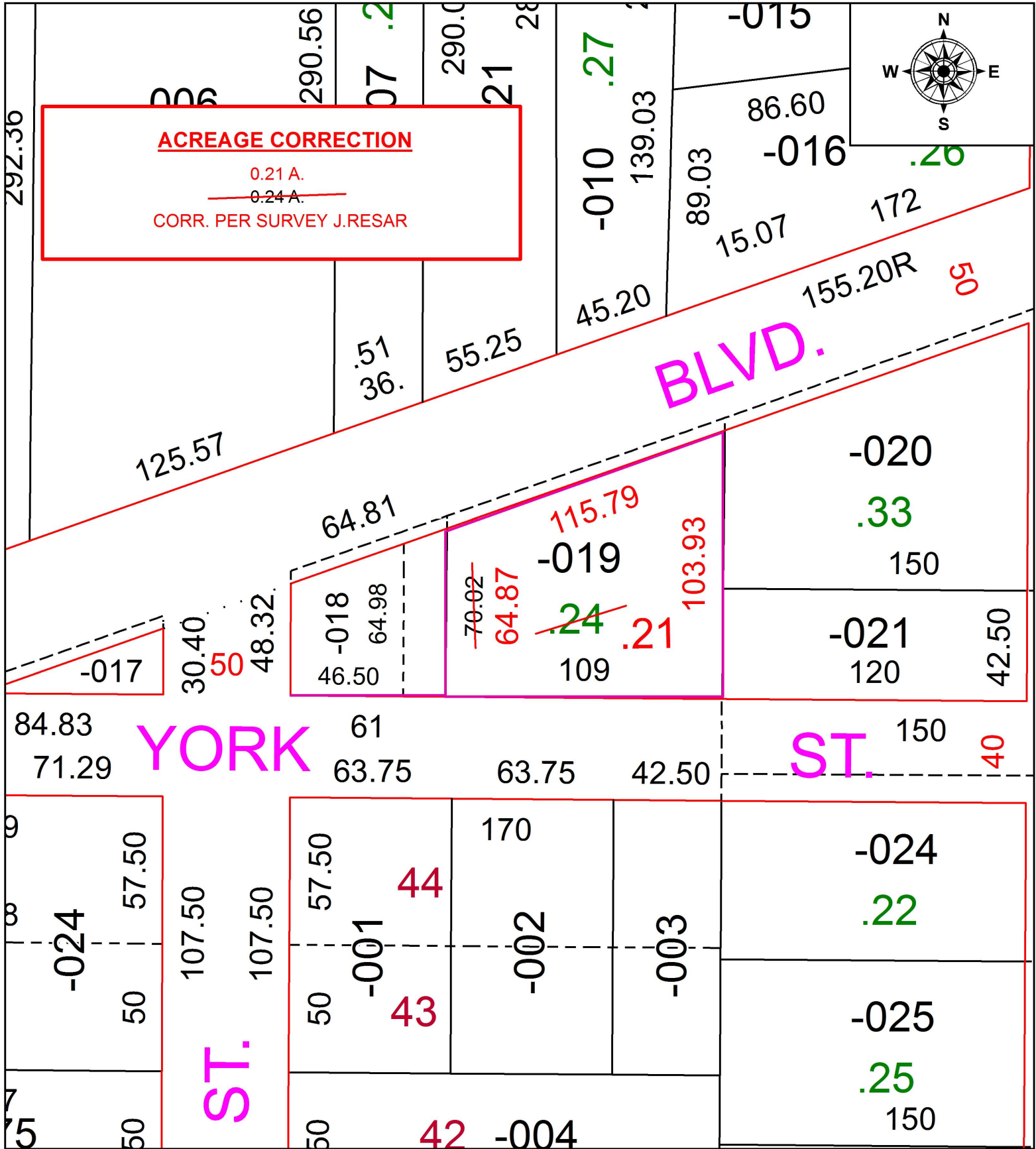


PARENT PARCEL: 04-00-006-135-019

CHILD PARCEL: XX-XX-XXX-XXX-XXX

STARTING POINT: INTERSECTION OF NORTH LINE OF YORK ST, AND EAST LINE OF BURTON ST.

16-03403-X



SPLITS/DEEDS PROCESSED
 LORAIN COUNTY TAX MAP DEPARTMENT
 226 MIDDLE AVE. ELYRIA, OH

SURVEYED BY: JAMES A. RESAR
 CLOSURE: 1: 92,642
 MAP PAGE(S): 4-00-006-A
 APPROVED BY: RRM DATE: 3-21-16
 SCALE: 1" = 50 PRIOR INSTRUMENT: N/A