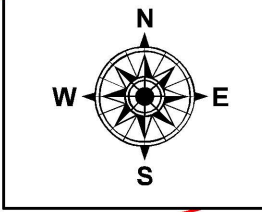
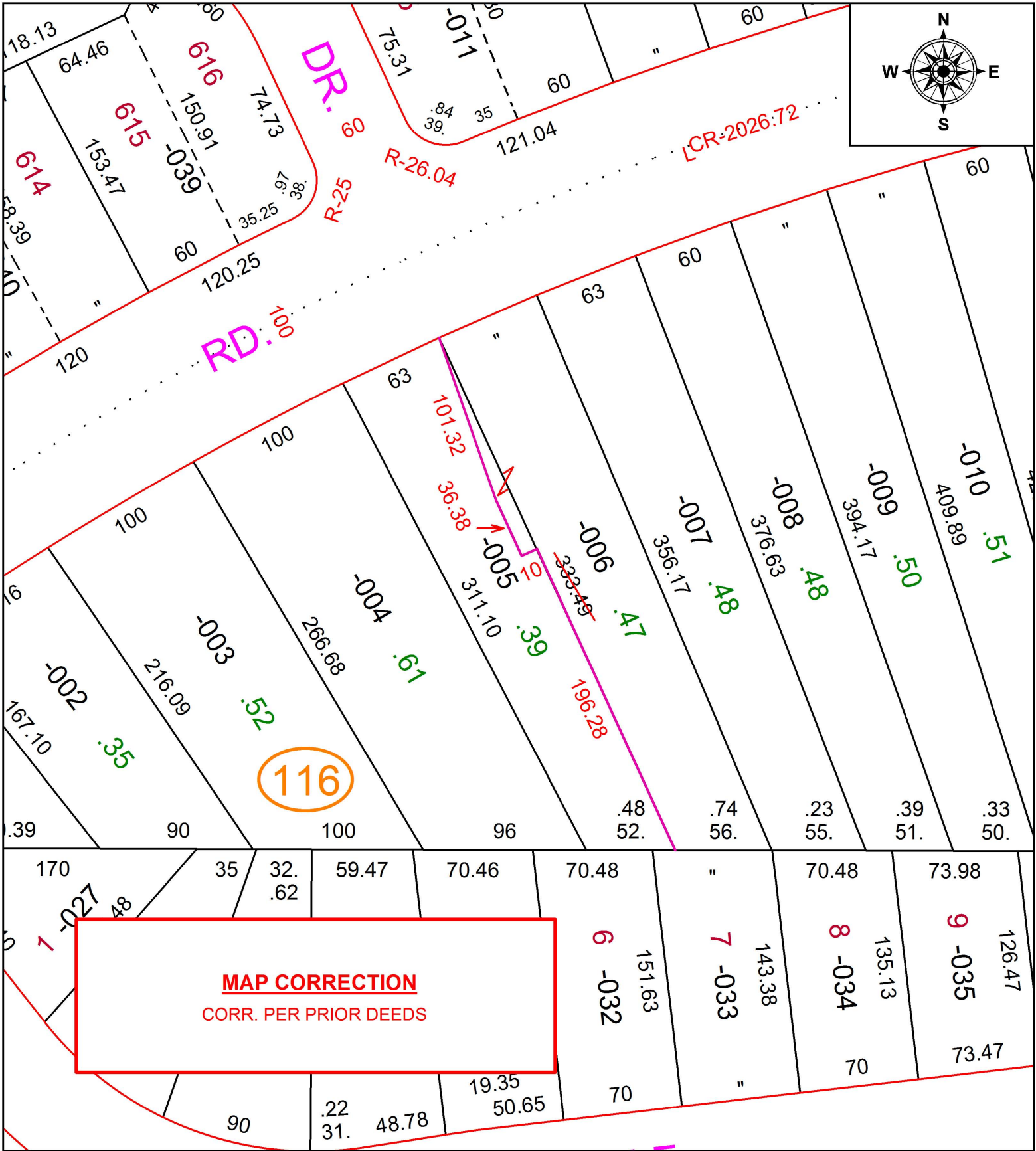


PARENT PARCEL: 0625-032-116-005, -006

CHILD PARCEL: XX-XX-XXX-XXX-XXX

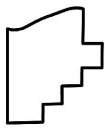
STARTING POINT: NORTHWEST CORNER OF LAND CONVEYED TO ROY W. & KATHRYN L. BURNS (DV 618/250)

16-03401-X



116

MAP CORRECTION
CORR. PER PRIOR DEEDS



SPLITS/DEEDS PROCESSED
LORAIN COUNTY TAX MAP DEPARTMENT
226 MIDDLE AVE. ELYRIA, OH

SURVEYED BY: _____ N/A
 CLOSURE: _____ N/A
 MAP PAGE(S): _____ 6-70
 APPROVED BY: _____ RRM DATE: _____ 3-22-16
 SCALE: _____ 1" = 75' PRIOR INSTRUMENT: _____ OR 395/653