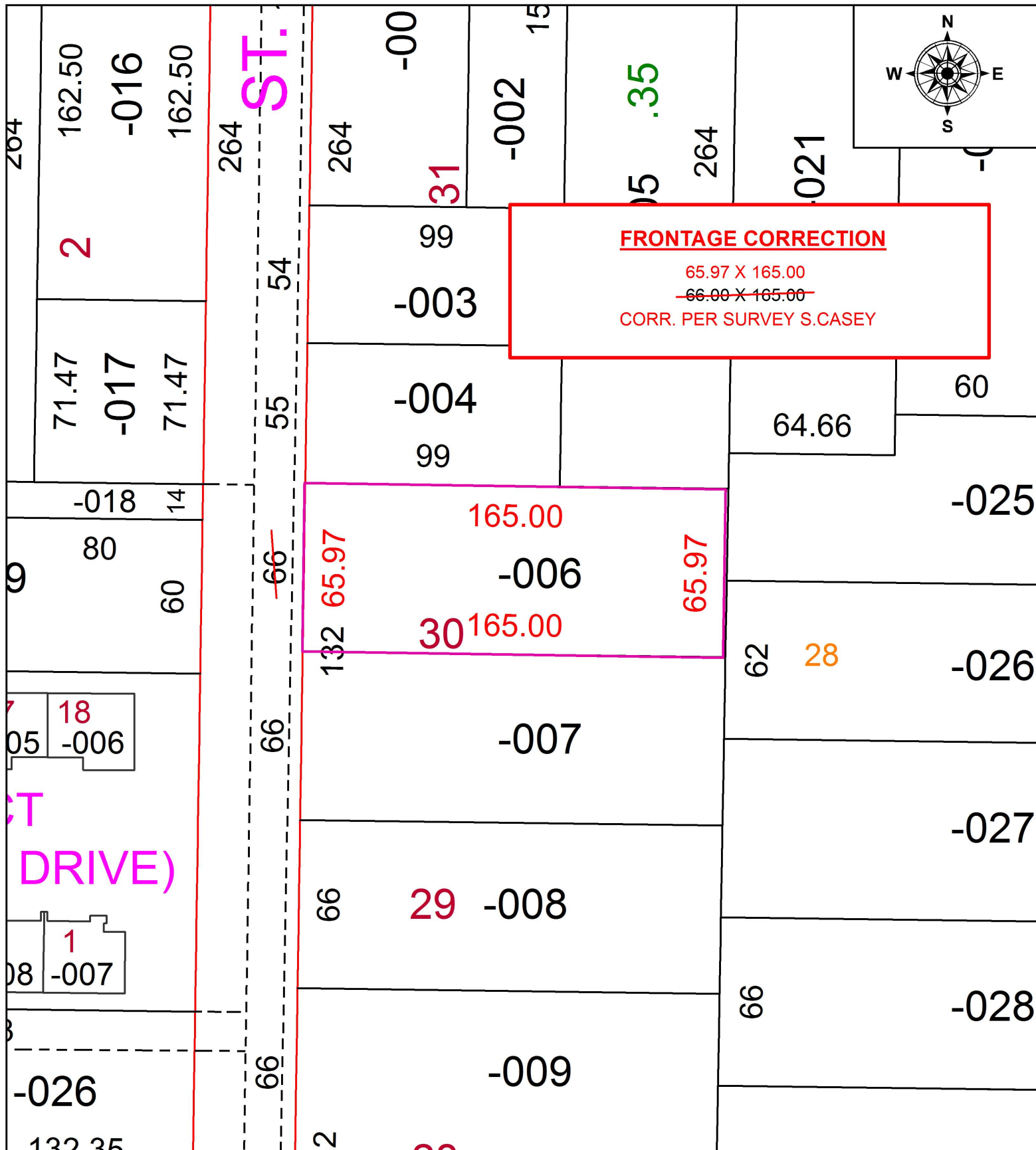


PARENT PARCEL: 09-00-086-112-006

CHILD PARCEL: XX-XX-XXX-XXX-XXX

STARTING POINT: INTERSECTION OF C/L OF S.R.58 AND C/L OF E. COLLEGE ST.

16-03400-D



**SPLITS/DEEDS PROCESSED**  
 LORAIN COUNTY TAX MAP DEPARTMENT  
 226 MIDDLE AVE. ELYRIA, OH

SURVEYED BY: SCOTTJ. CASEY  
 CLOSURE: 1: 2147483648  
 MAP PAGE(S): 9-00-086-B  
 APPROVED BY: RRM DATE: 3-17-16  
 SCALE: 1" = 50 PRIOR INSTRUMENT: 20150552291