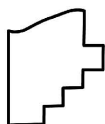
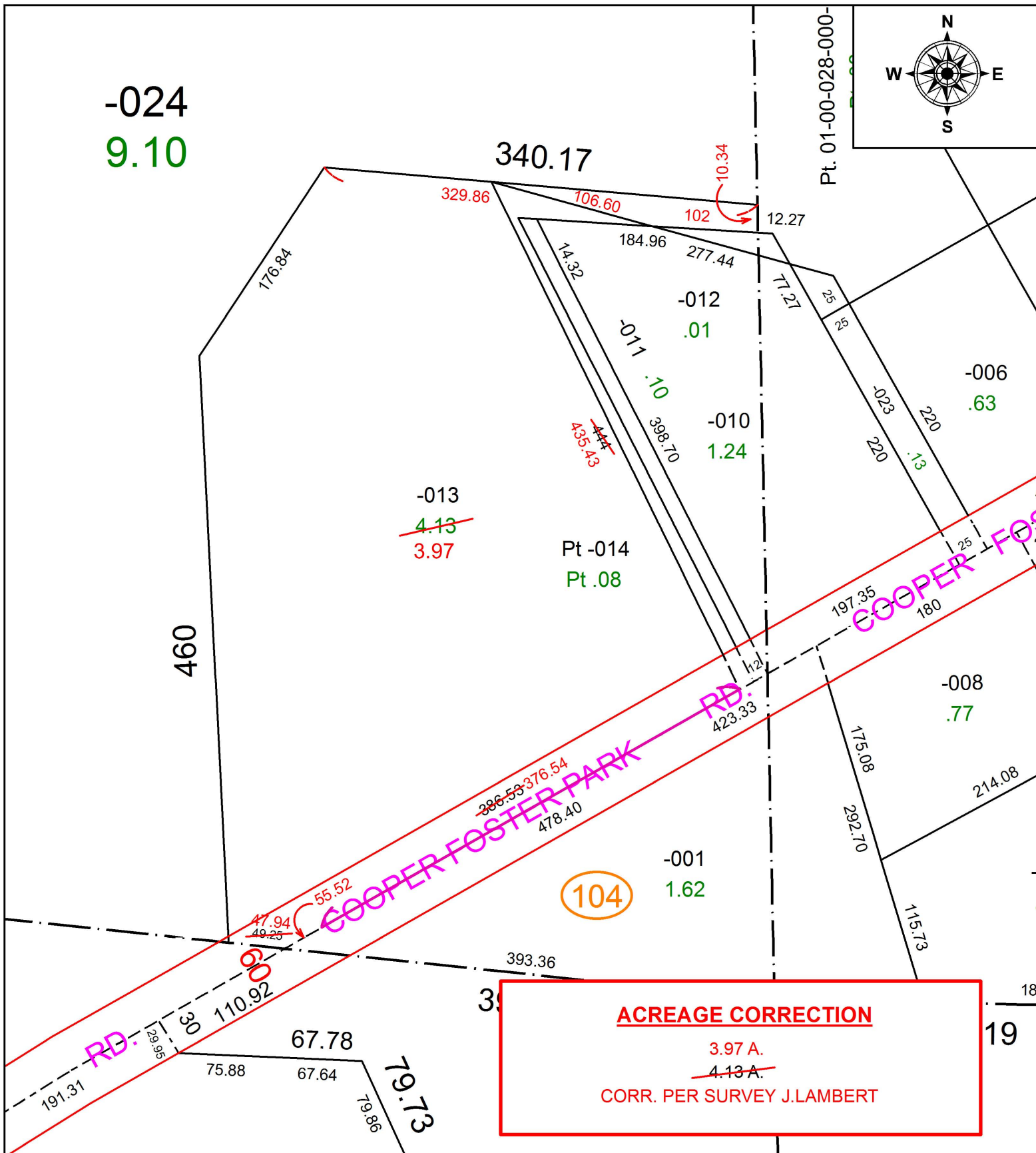


PARENT PARCEL: 01-00-028-103-013

CHILD PARCEL: XX-XX-XXX-XXX-XXX

STARTING POINT: SOUTHEAST CORNER OF O.L.28

16-03398-X



SPLITS/DEEDS PROCESSED
LORAIN COUNTY TAX MAP DEPARTMENT
226 MIDDLE AVE. ELYRIA, OH

SURVEYED BY:	JOSHUA C. LAMBERT
CLOSURE:	1: 219,515
MAP PAGE(S):	01-00-028
APPROVED BY:	RRM DATE: 3-16-16
SCALE:	1" = 100 PRIOR INSTRUMENT: 20150559320