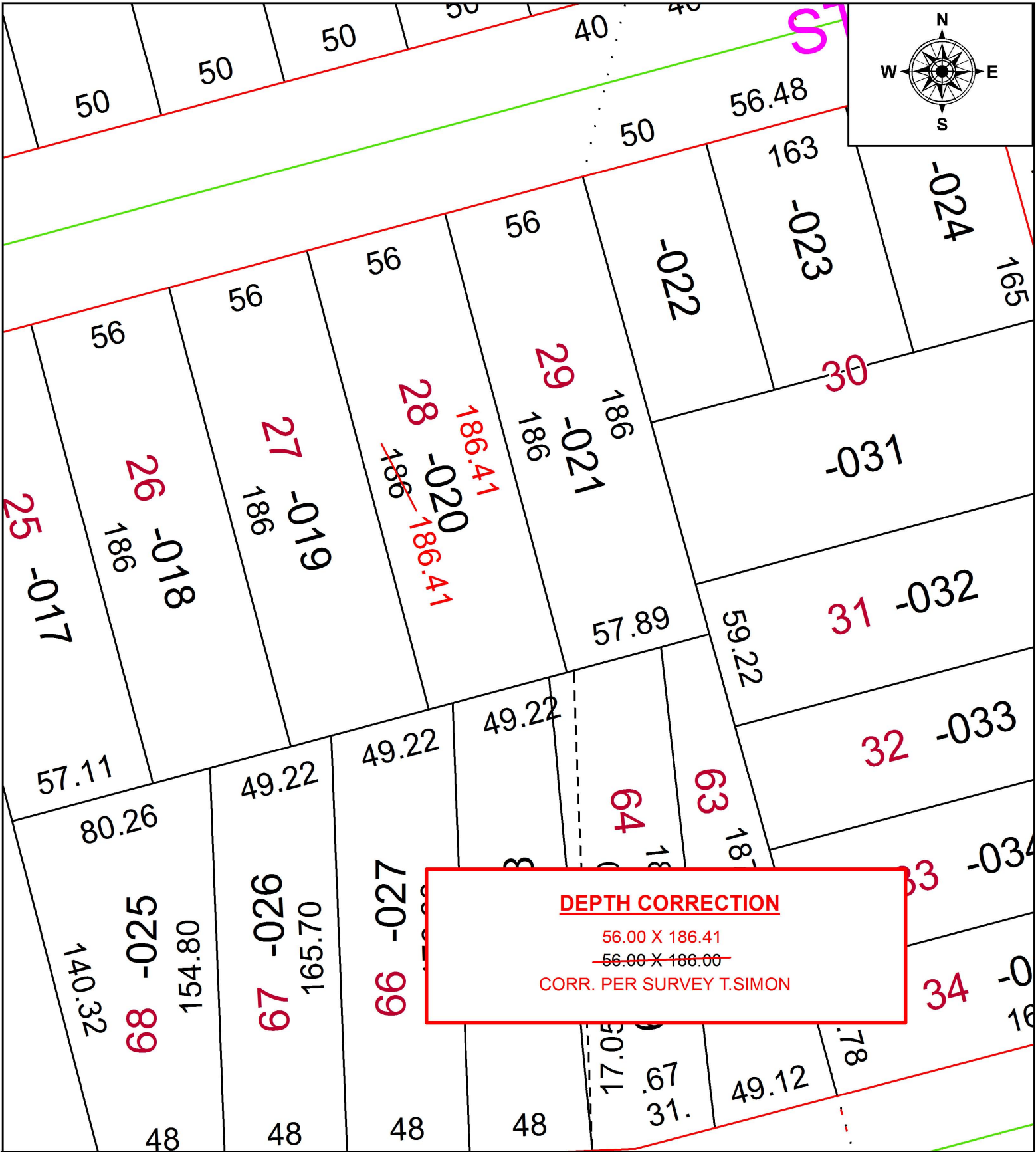


PARENT PARCEL: 02-01-006-113-020

CHILD PARCEL: XX-XX-XXX-XXX-XXX

STARTING POINT: INTERSECTION OF C/L OF OBERLIN AVE. AND C/L OF W.6TH ST.

16-03396-D



**SPLITS/DEEDS PROCESSED**  
LORAIN COUNTY TAX MAP DEPARTMENT  
226 MIDDLE AVE. ELYRIA, OH

|                   |                   |
|-------------------|-------------------|
| SURVEYED BY:      | THOMAS A. SIMON   |
| CLOSURE:          | 1:2,147,483,648   |
| MAP PAGE(S):      | 2-01-006-B        |
| APPROVED BY:      | RRM DATE: 3-14-16 |
| SCALE:            | 1" = 50           |
| PRIOR INSTRUMENT: | 20150539069       |