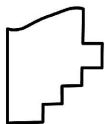
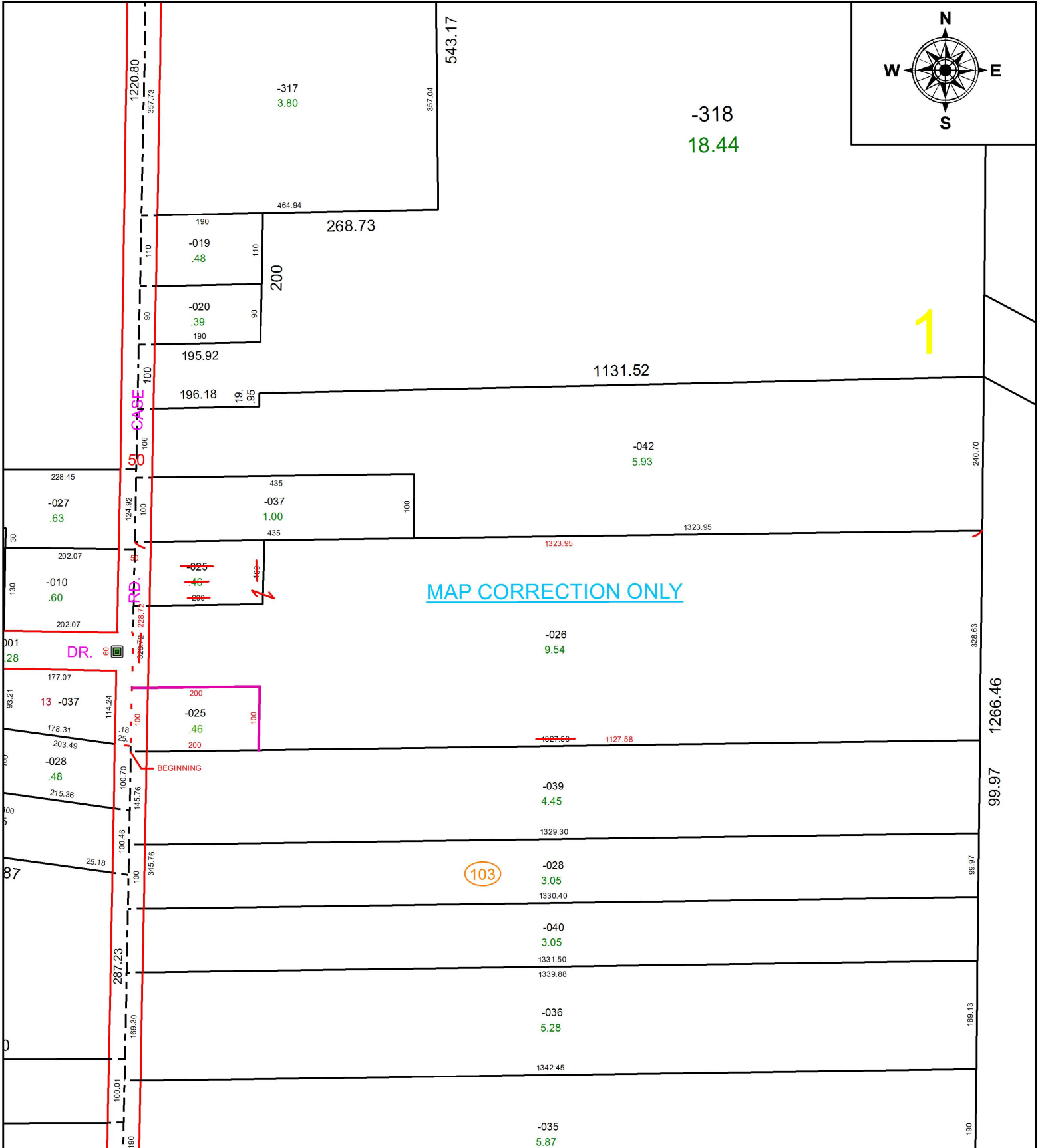
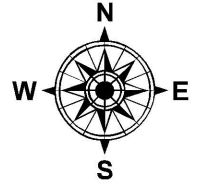


PARENT PARCEL: 04-00-001-103-025 & 026
 CHILD PARCEL: XX-XX-XXX-XXX-XXX
 STARTING POINT: N.W. CORNER OF BECKWITH

16-03395-C



SPLITS/DEEDS PROCESSED
 LORAIN COUNTY TAX MAP DEPARTMENT
 226 MIDDLE AVE. ELYRIA, OH

SURVEYED BY: NA
 CLOSURE: NA
 MAP PAGE(S): 04-00-001
 APPROVED BY: TJS DATE: 3/9/16
 SCALE: 1" = 200 PRIOR INSTRUMENT: DV 1049/619