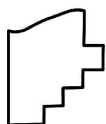
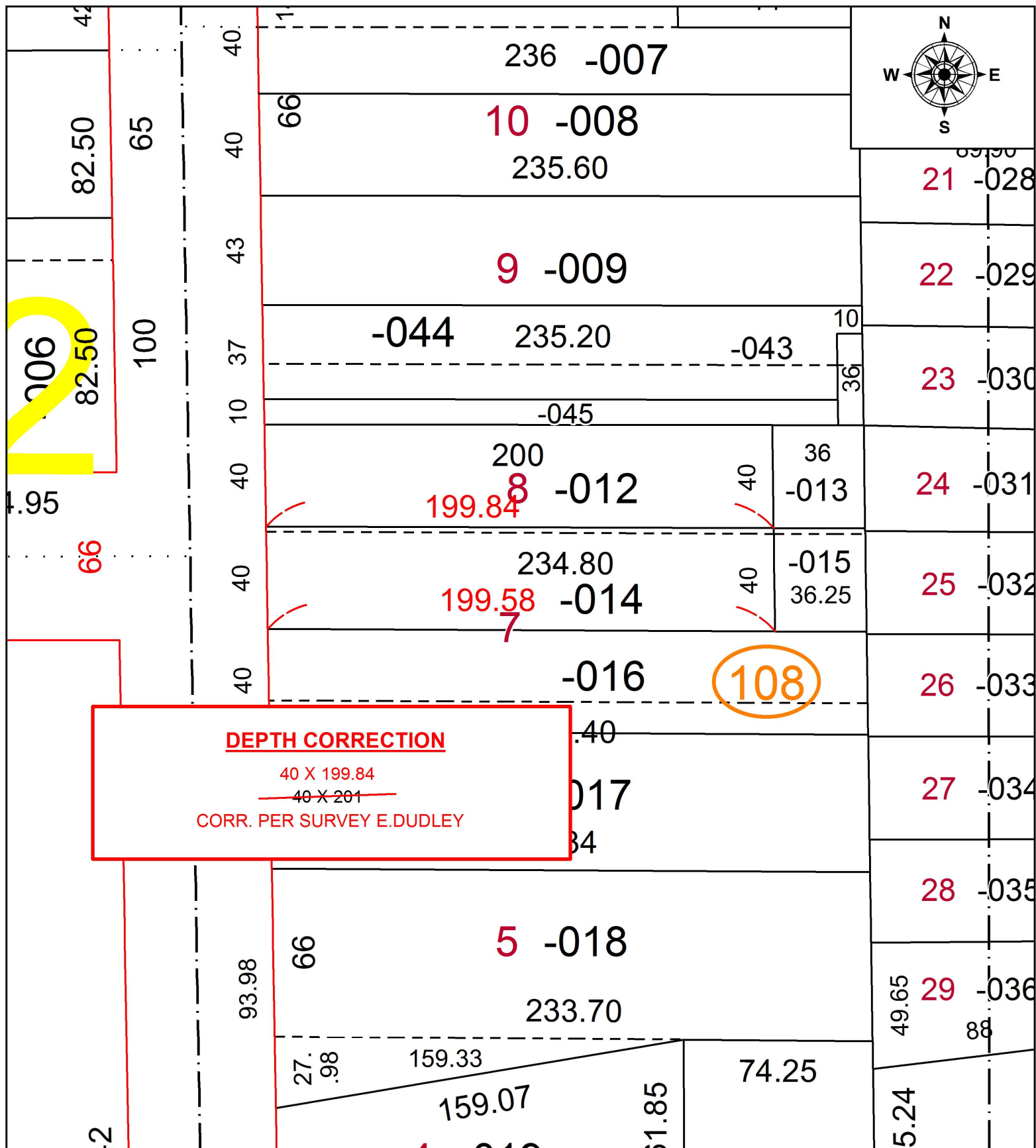


PARENT PARCEL: 06-25-038-108-014

CHILD PARCEL: XX-XX-XXX-XXX-XXX

STARTING POINT: SOUTHWEST CORNER OF S/L 6

16-03391-D



**SPLITS/DEEDS PROCESSED**  
LORAIN COUNTY TAX MAP DEPARTMENT  
226 MIDDLE AVE. ELYRIA, OH

SURVEYED BY:	EDWARD B. DUDLEY III		
CLOSURE:	1: 86,694		
MAP PAGE(S):	6-104		
APPROVED BY:	RRM	DATE:	3-1-16
SCALE:	1" = 50	PRIOR INSTRUMENT:	20150561080