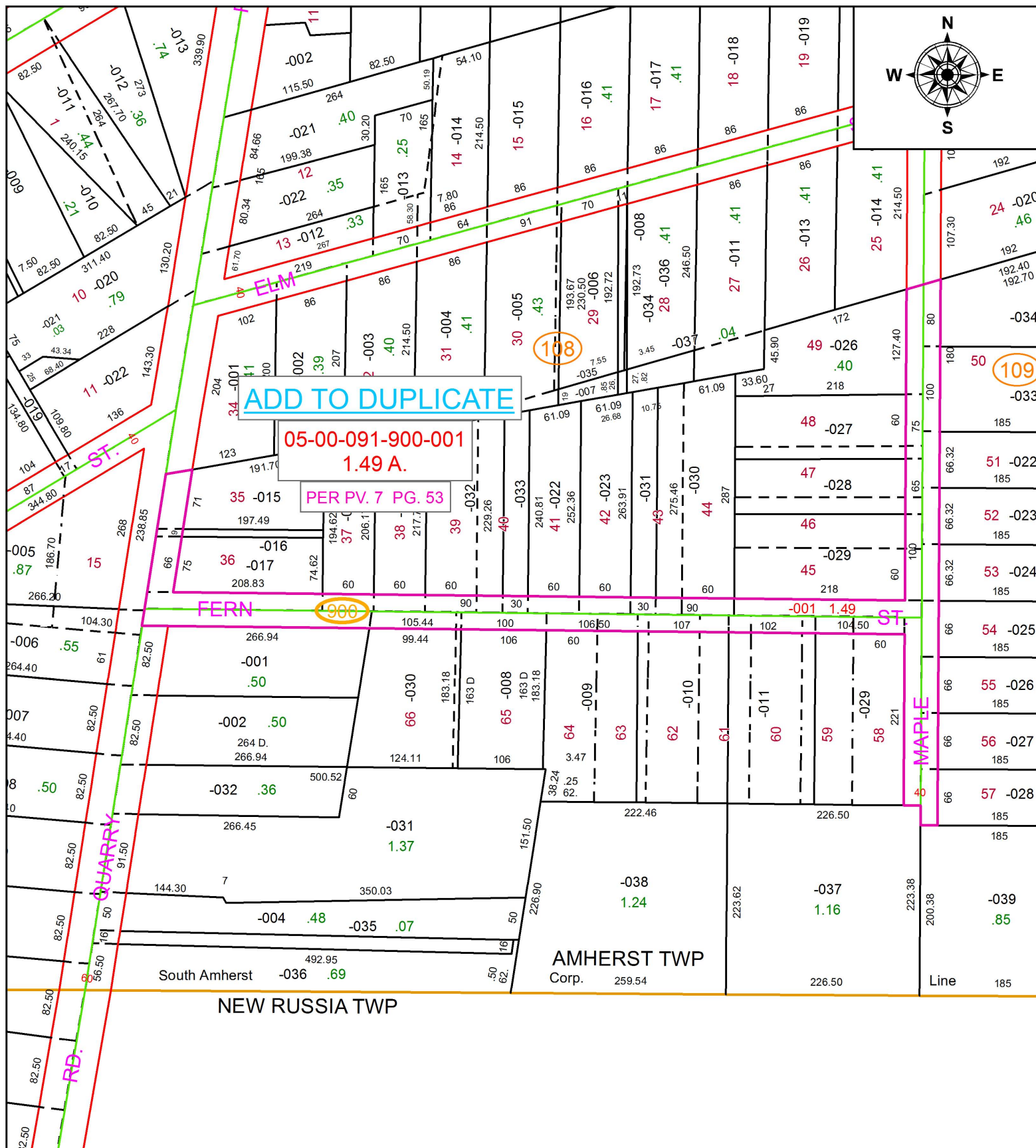


PARENT PARCEL: ADD TO DUPLICATE

CHILD PARCEL: 05-00-091-900-001

STARTING POINT: PER PLAT VOL. 7 PG. 53

16-03390-A



SPLITS/DEEDS PROCESSED
 LORAIN COUNTY TAX MAP DEPARTMENT
 226 MIDDLE AVE. ELYRIA, OH

SURVEYED BY: C. H. SNOW
 CLOSURE: NA
 MAP PAGE(S): 05-00-091
 APPROVED BY: TJS DATE: 2/29/16
 SCALE: 1" = 150 PRIOR INSTRUMENT: DV XXXX/XXXX