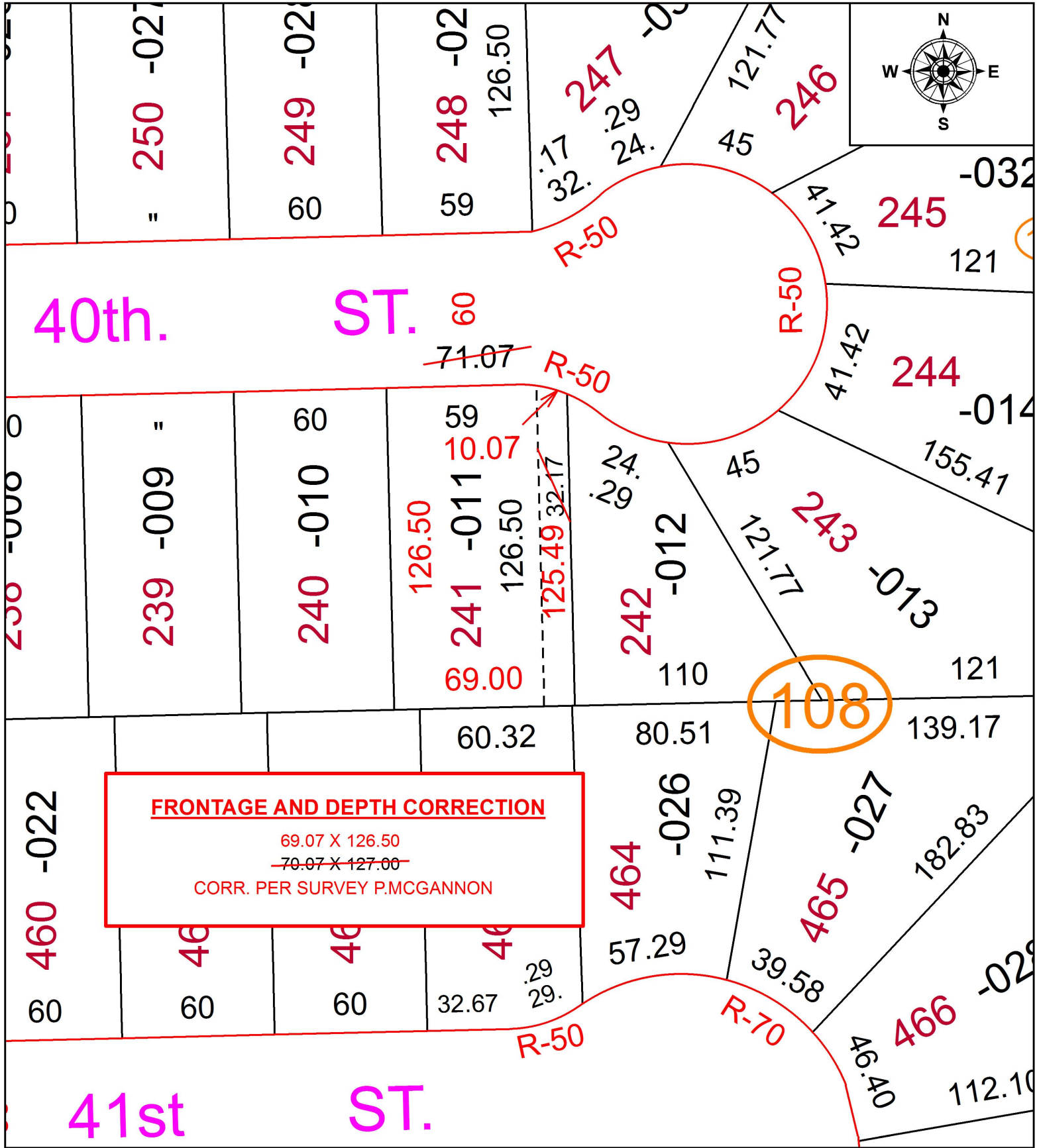


PARENT PARCEL: 03-00-099-108-011

CHILD PARCEL: XX-XX-XXX-XXX-XXX

STARTING POINT: NORTHWEST CORNER OF S/L 241

16-03388-C



**FRONTAGE AND DEPTH CORRECTION**  
 69.07 X 126.50  
~~70.07 X 127.00~~  
 CORR. PER SURVEY P.MCGANNON



**SPLITS/DEEDS PROCESSED**  
 LORAIN COUNTY TAX MAP DEPARTMENT  
 226 MIDDLE AVE. ELYRIA, OH

SURVEYED BY: PATRICK A. MCGANNON  
 CLOSURE: 1: 180,946  
 MAP PAGE(S): 3-00-099-B  
 APPROVED BY: RRM DATE: 2-25-16  
 SCALE: 1" = 50 PRIOR INSTRUMENT: 20120405255