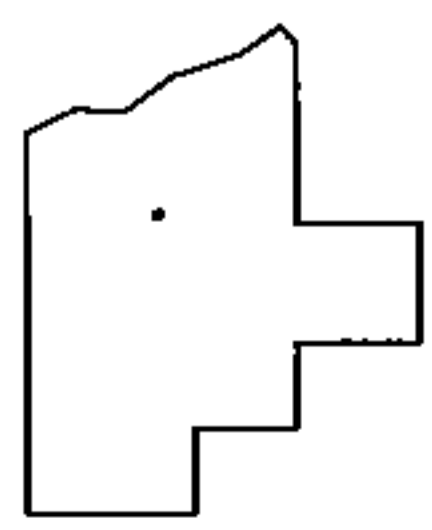
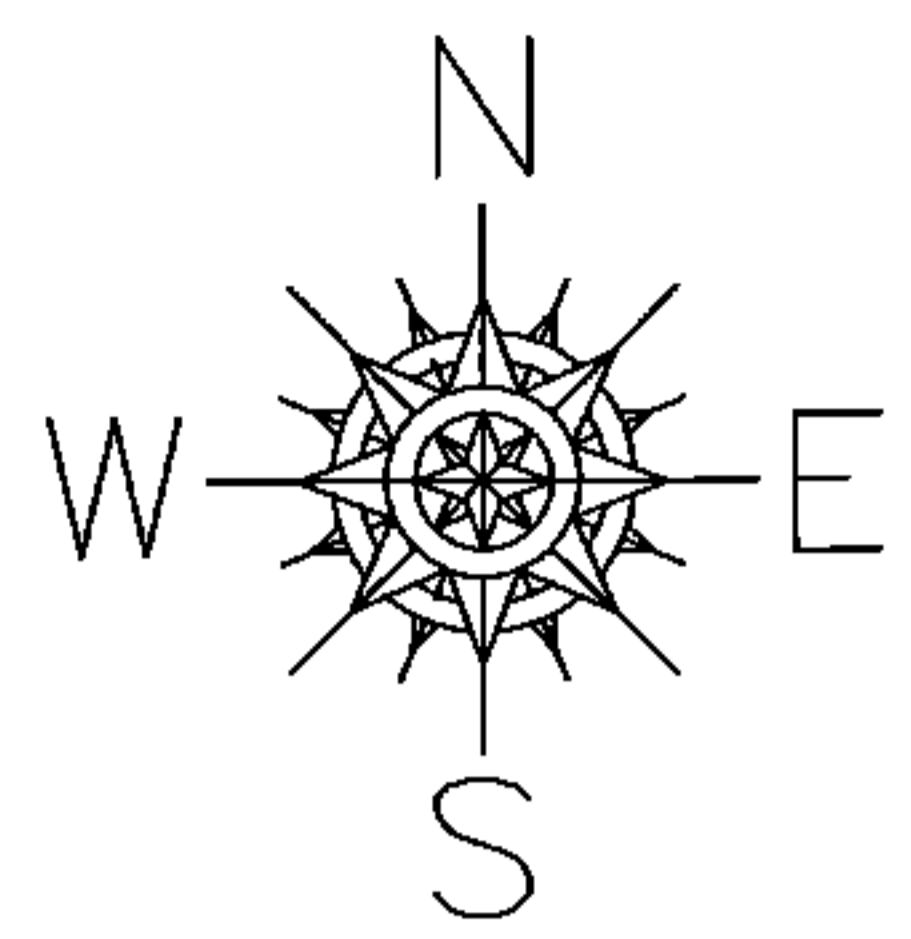
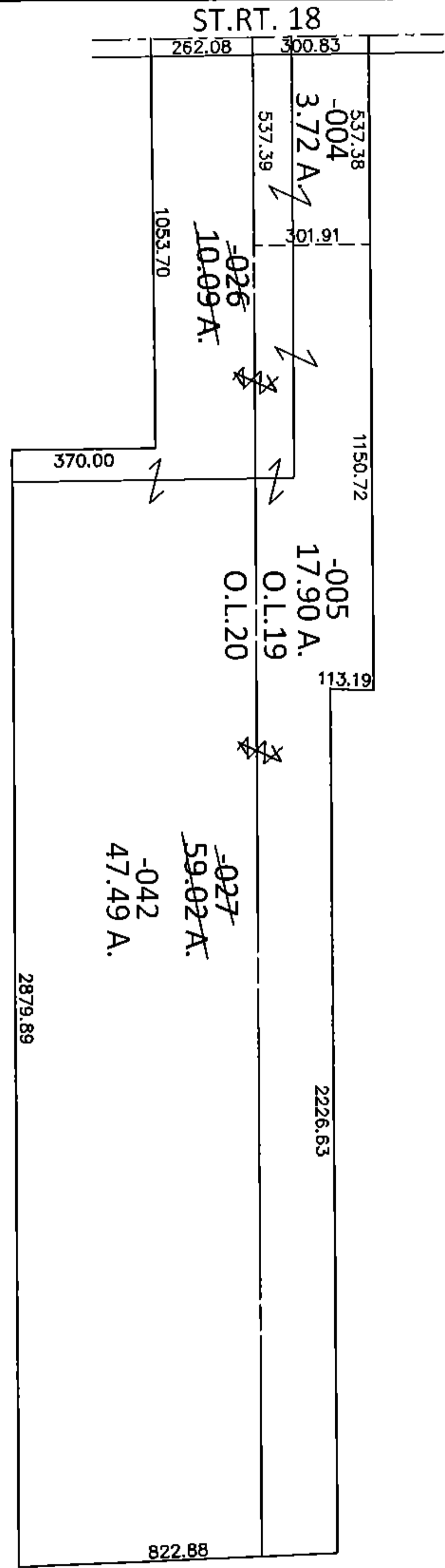


PARENT PARCEL: 17-07-020-000-026, -027
 CHILD PARCEL: 17-07-019-000-004, -005, 17-07-020-000-042
 STARTING POINT: NORTHWEST CORNER OF O.L.19

15-03387



SPLITS/DEEDS PROCESSED
 LORAIN COUNTY TAX MAP DEPARTMENT
 226 MIDDLE AVE. ELYRIA, OHIO

SURVEYED BY: RICHARD D. CARLSON
 CLOSURE: .01:10,000
 MAP PAGE(S): 17-E
 APPROVED BY: RRM DATE: 7-13-15
 SCALE: 1"= 500 PRIOR INST.: 20130457320