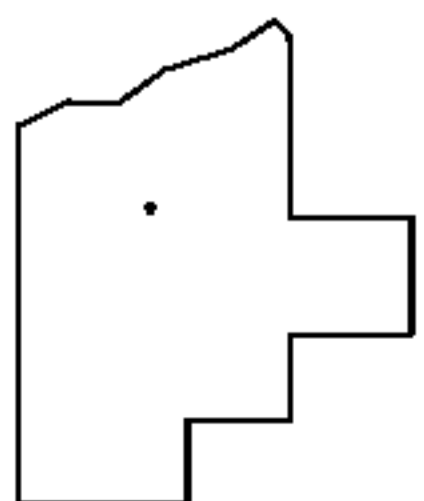
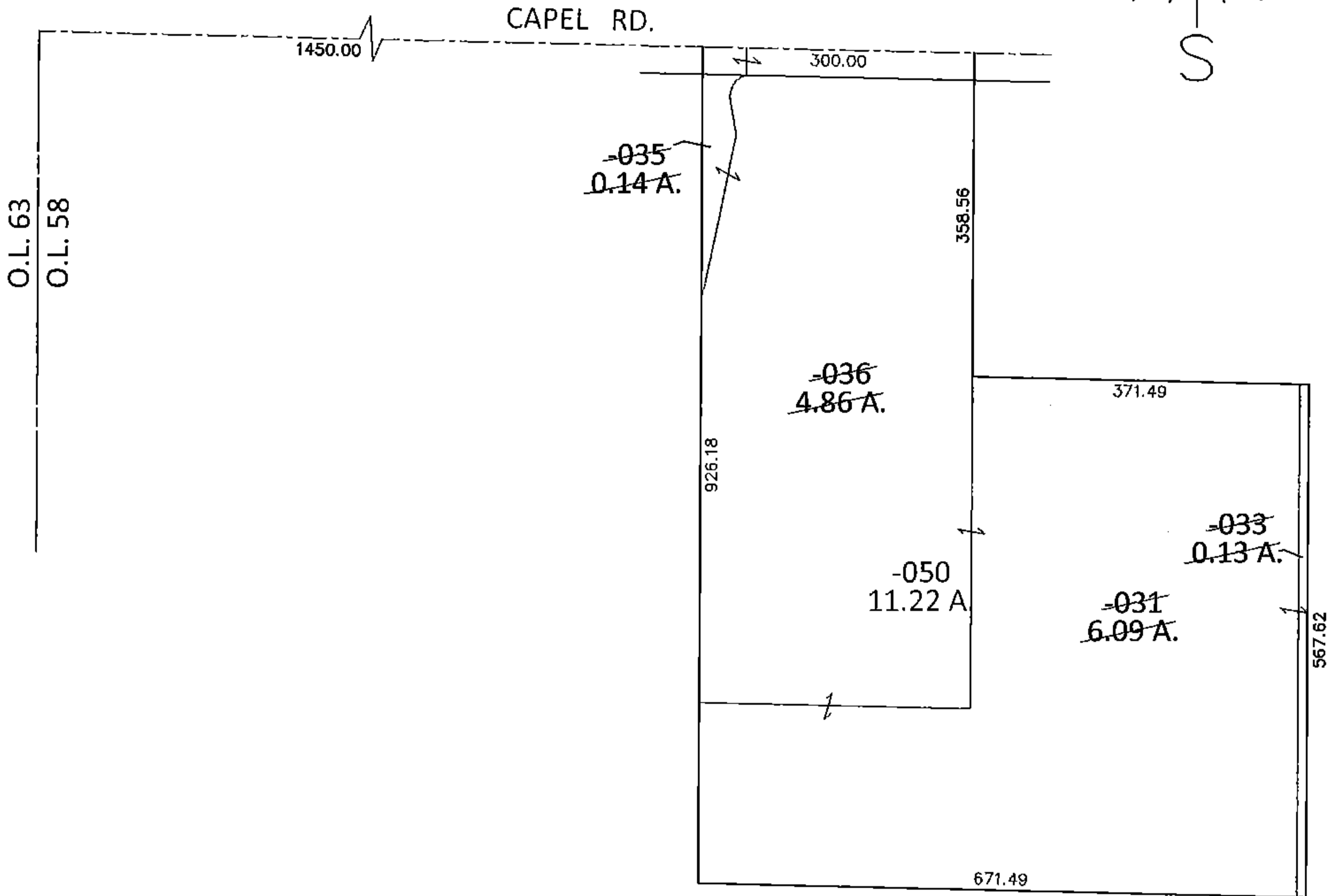
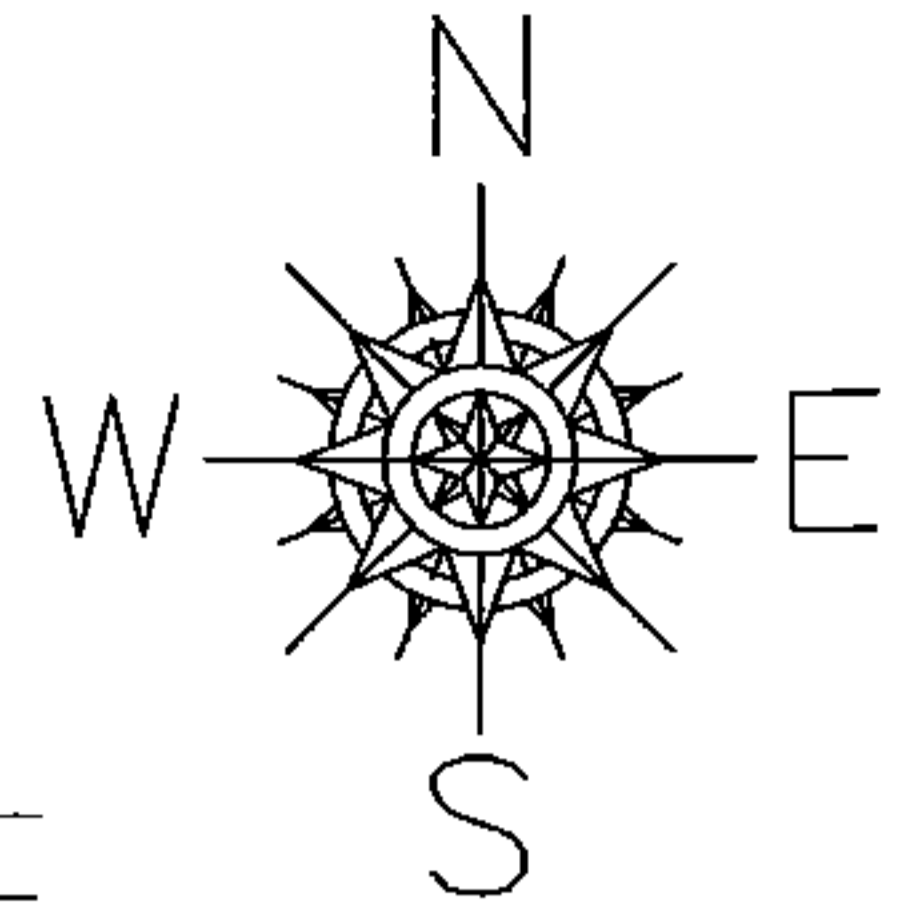


PARENT PARCEL: 11-00-058-000-031, -033, -035, -036

CHILD PARCEL: 11-00-058-000-050

STARTING POINT: NORTHWEST CORNER OF O.L.58

15-03386



SPLITS/DEEDS PROCESSED

LORAIN COUNTY TAX MAP DEPARTMENT
226 MIDDLE AVE. ELYRIA, OHIO

SURVEYED BY: MICHAEL MACKAY

CLOSURE: .01:10,0000

MAP PAGE(S): 11-00-058-B

APPROVED BY: RRM DATE: 7-7-15

SCALE: 1"= 200 PRIOR INST.: 20140526009