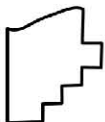
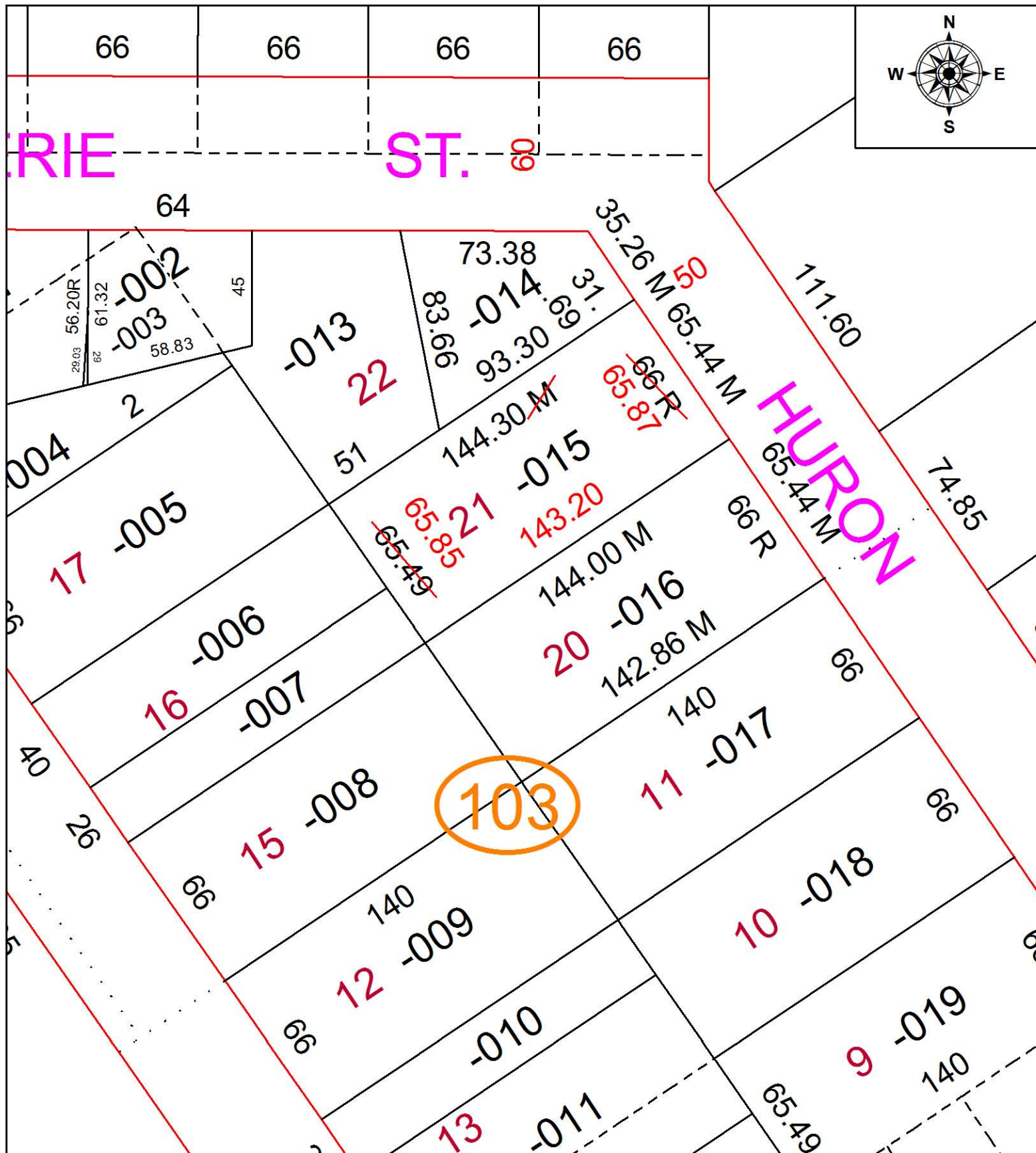


PARENT PARCEL: 11-00-081-103-015

CHILD PARCEL: XX-XX-XXX-XXX-XXX

STARTING POINT: INTERSECTION OF NORTH LINE OF CLEVELAND ST. AND WEST LINE OF HURON ST.

16-03383-C



SPLITS/DEEDS PROCESSED
 LORAIN COUNTY TAX MAP DEPARTMENT
 226 MIDDLE AVE. ELYRIA, OH

SURVEYED BY: RICHARD D. CARLSON
 CLOSURE: 1: 217,639
 MAP PAGE(S): 11-00-081
 APPROVED BY: RRM DATE: 2-11-16
 SCALE: 1" = 50 PRIOR INSTRUMENT: 20080268948