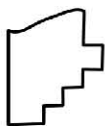
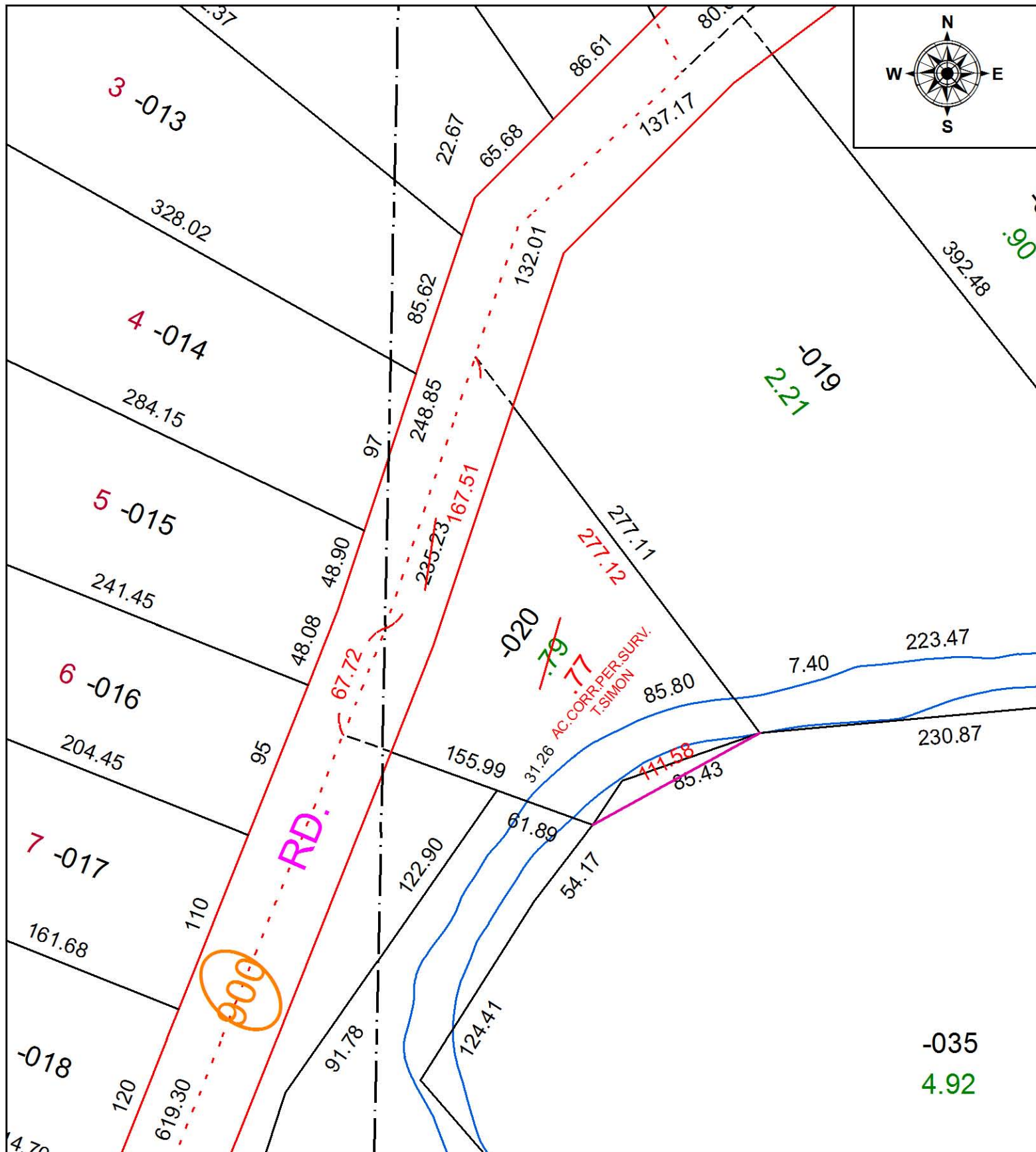


PARENT PARCEL: 05-00-021-102-020

CHILD PARCEL: XX-XX-XXX-XXX-XXX

STARTING POINT: SOUTHEAST CORNER OF BRECKENRIDGE SUB, (VOL.24 PG.99)

16-03382-X



SPLITS/DEEDS PROCESSED

LORAIN COUNTY TAX MAP DEPARTMENT
226 MIDDLE AVE. ELYRIA, OH

SURVEYED BY: THOMAS SIMON

CLOSURE: 1: 227,573

MAP PAGE(S): 5-00-021

APPROVED BY: RRM DATE: 2-11-16

SCALE: 1 in = 75 ft PRIOR INSTRUMENT: 20110365635