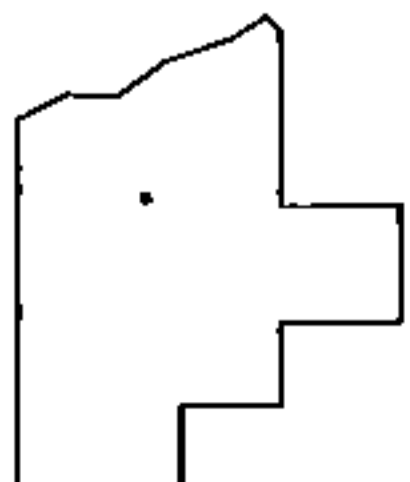
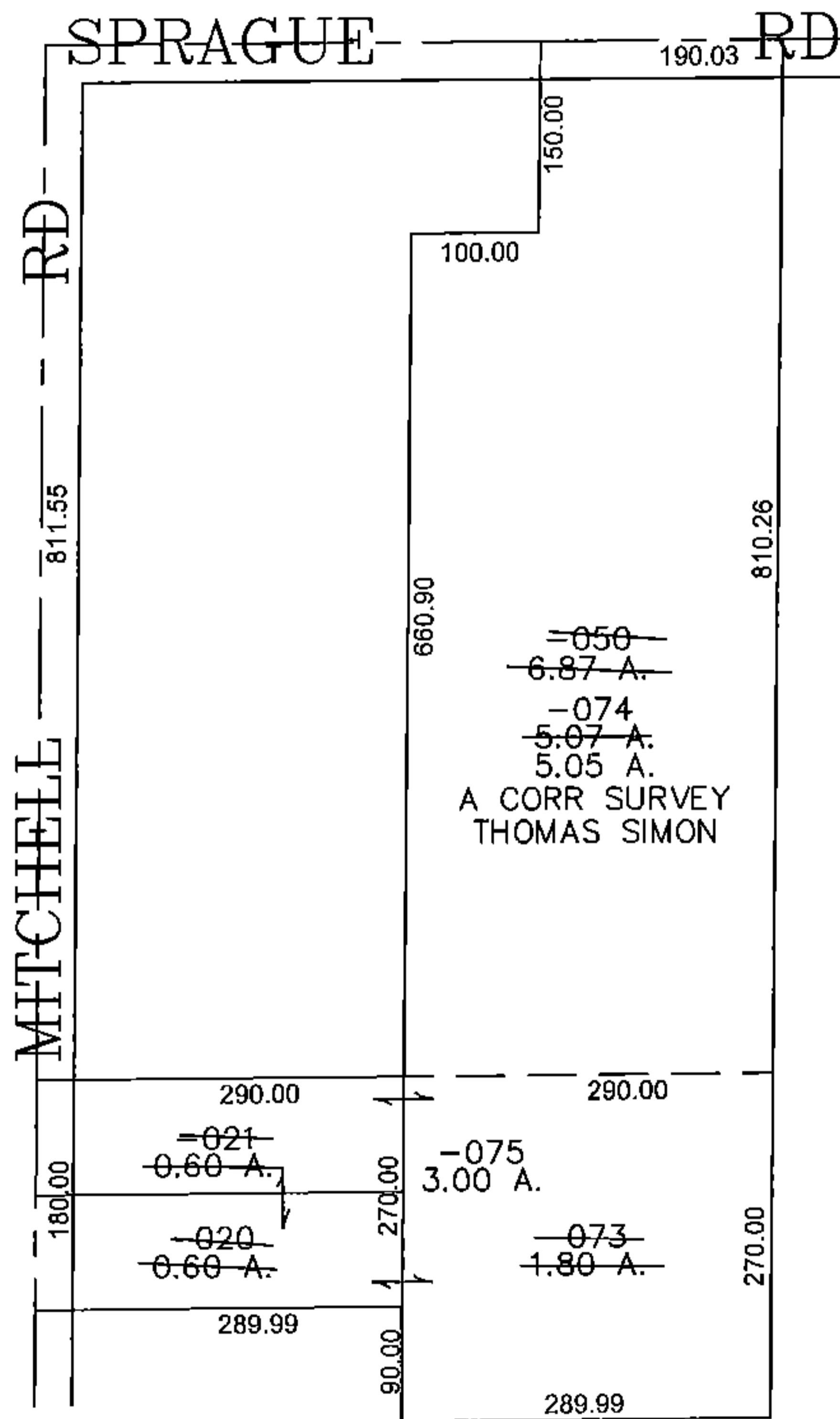
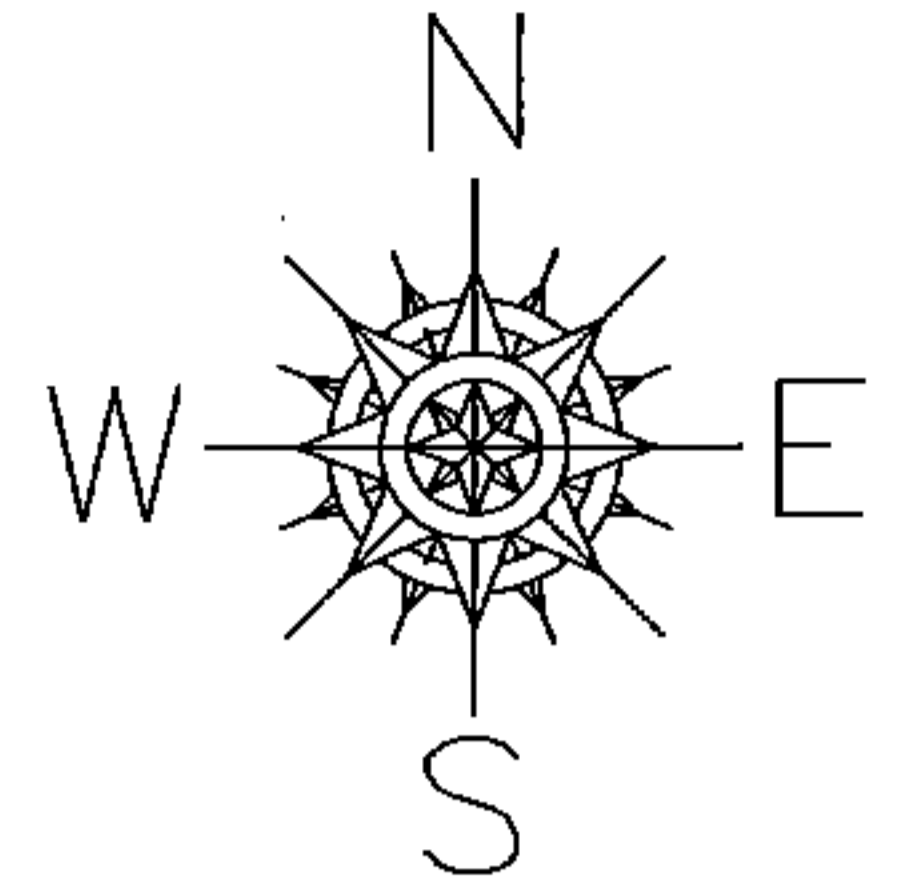


PARENT PARCEL: 12-00-081-000-050, -021, -020

CHILD PARCEL: 12-00-081-000-073, -074, -075

STARTING POINT: CENTERLINE OF MITCHELL RD & SPRAGUE RD

15-03381



SPLITS/DEEDS PROCESSED
 LORAIN COUNTY TAX MAP DEPARTMENT
 226 MIDDLE AVE. ELYRIA, OHIO

SURVEYED BY: THOMAS SIMON
 CLOSURE: 0.00 : 10.000
 MAP PAGE(S): 12-00-081-B
 APPROVED BY: JAH DATE: 6/19/2015
 SCALE: 1" = 200 PRIOR INSTRUMENT: 20030909258