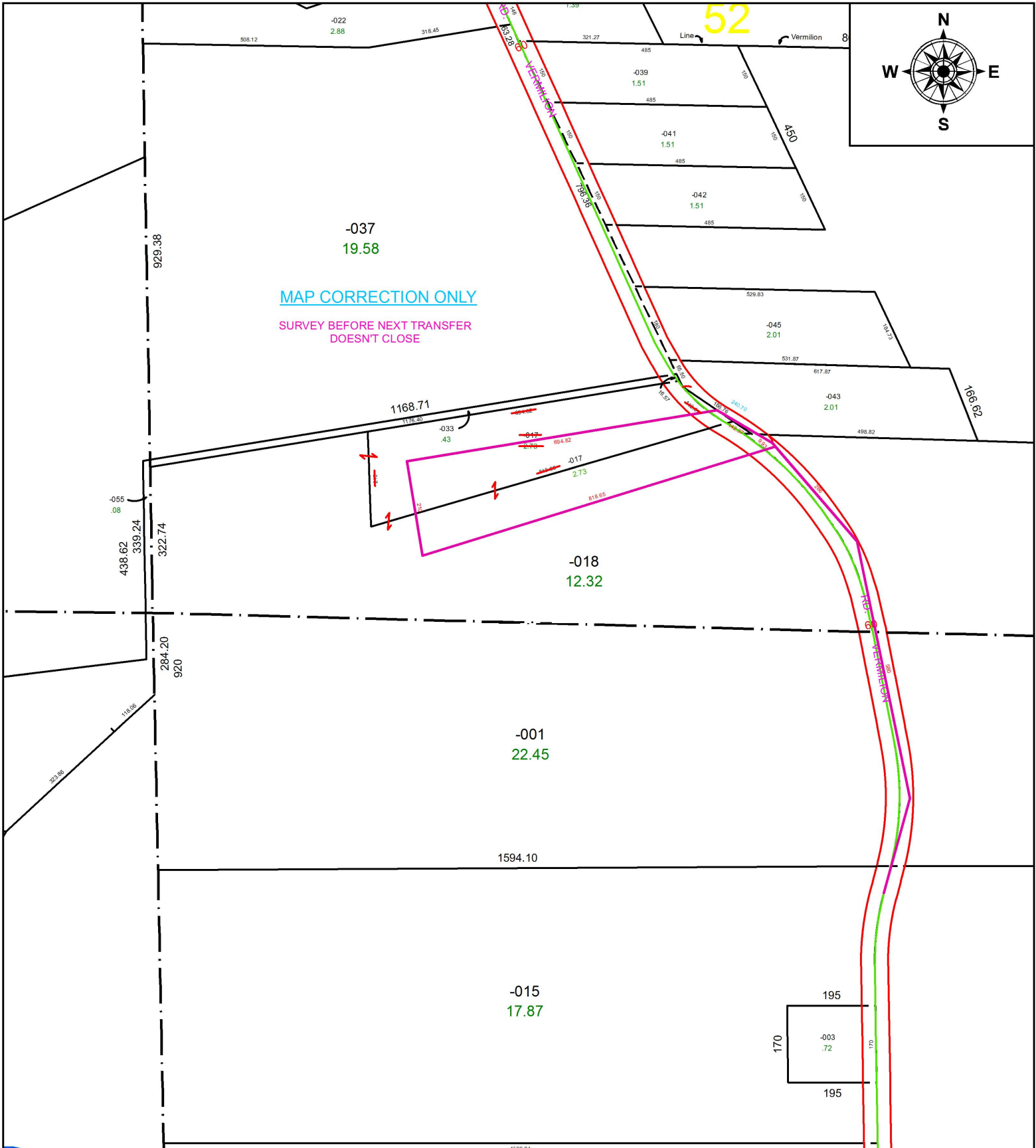


PARENT PARCEL: 01-00-052-000-017

CHILD PARCEL: XX-XX-XXX-XXX-XXX

STARTING POINT: CL OF VERMILION RD. & SOUTH LINE OF ALEXANDER MORE DV 490/204

16-03381-C



SPLITS/DEEDS PROCESSED
 LORAIN COUNTY TAX MAP DEPARTMENT
 226 MIDDLE AVE. ELYRIA, OH

SURVEYED BY: ARNOLD F. KOEPP

CLOSURE: DOESN'T CLOSE

MAP PAGE(S): 01-00-052

APPROVED BY: TJS **DATE:** 2/11/16

SCALE: 1 in = 282 ft **PRIOR INSTRUMENT:** DV XXXX/XXXX