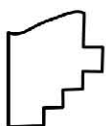
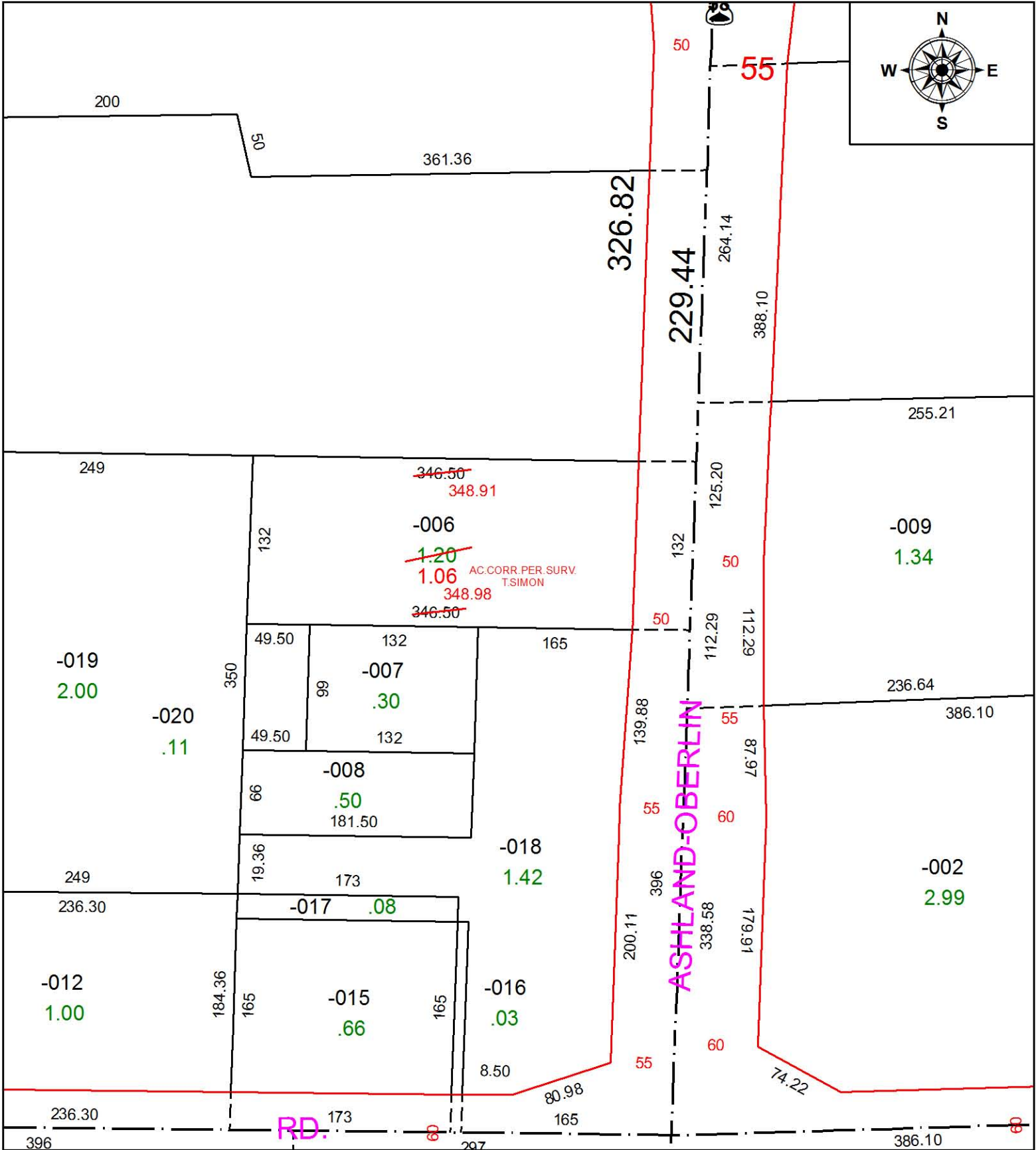


PARENT PARCEL: 14-00-075-000-006

CHILD PARCEL: XX-XX-XXX-XXX-XXX

STARTING POINT: INTERSECTION OF C/L OF S.R.303 AND C/L S.R.58

16-03380-A



**SPLITS/DEEDS PROCESSED**  
 LORAIN COUNTY TAX MAP DEPARTMENT  
 226 MIDDLE AVE. ELYRIA, OH

SURVEYED BY: THOMAS SIMON  
 CLOSURE: 1: 166,847  
 MAP PAGE(S): 14-00-075-B  
 APPROVED BY: TJS DATE: 2-8-16  
 SCALE: 1" = 100 PRIOR INSTRUMENT: 20060157652