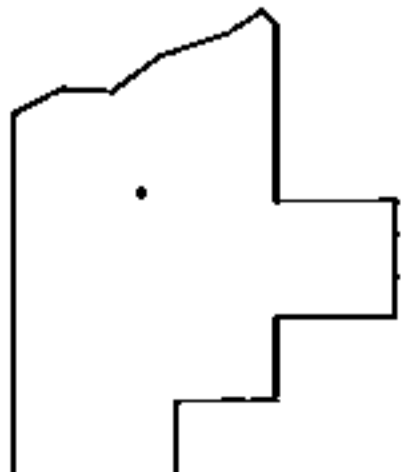
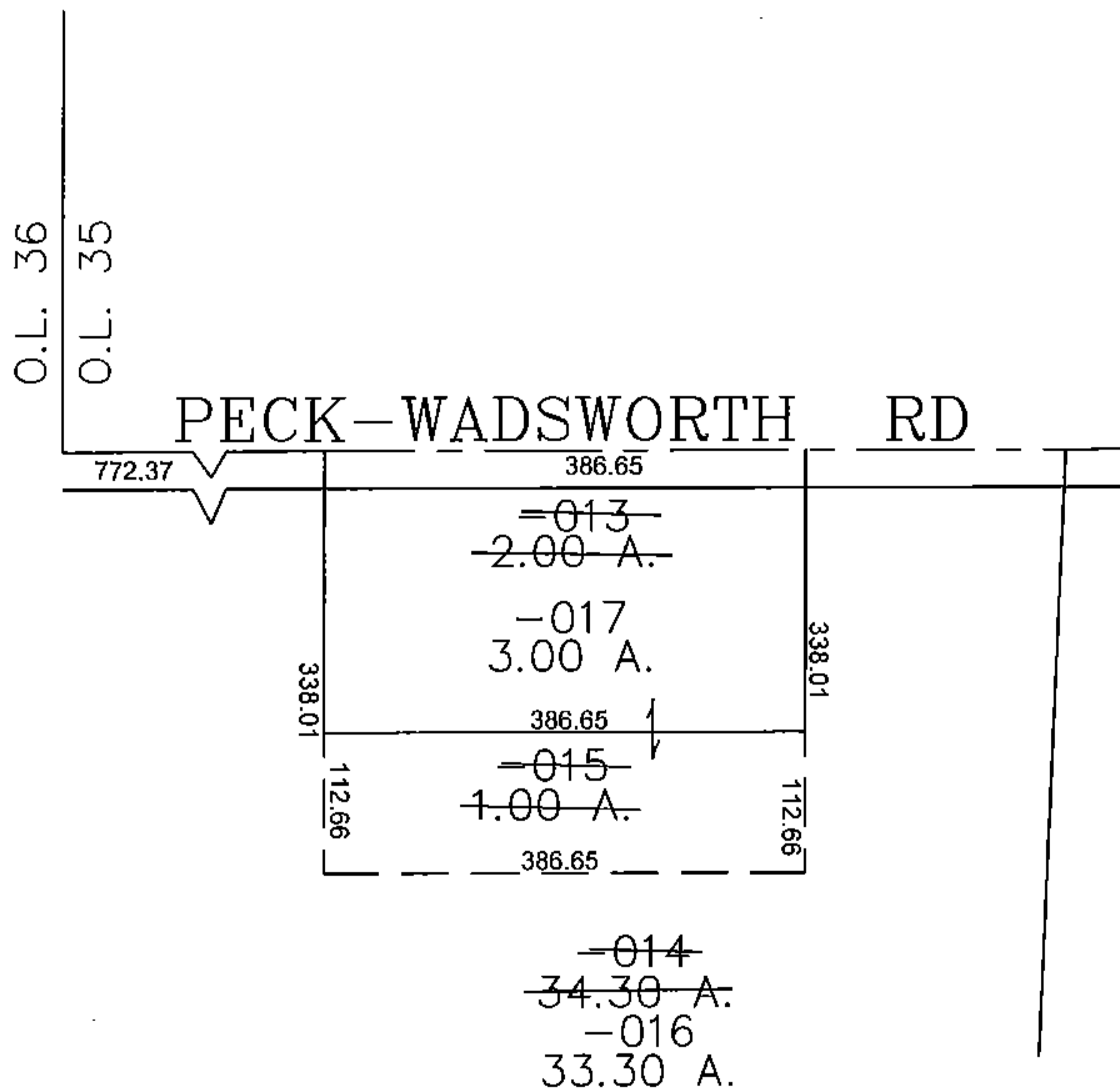
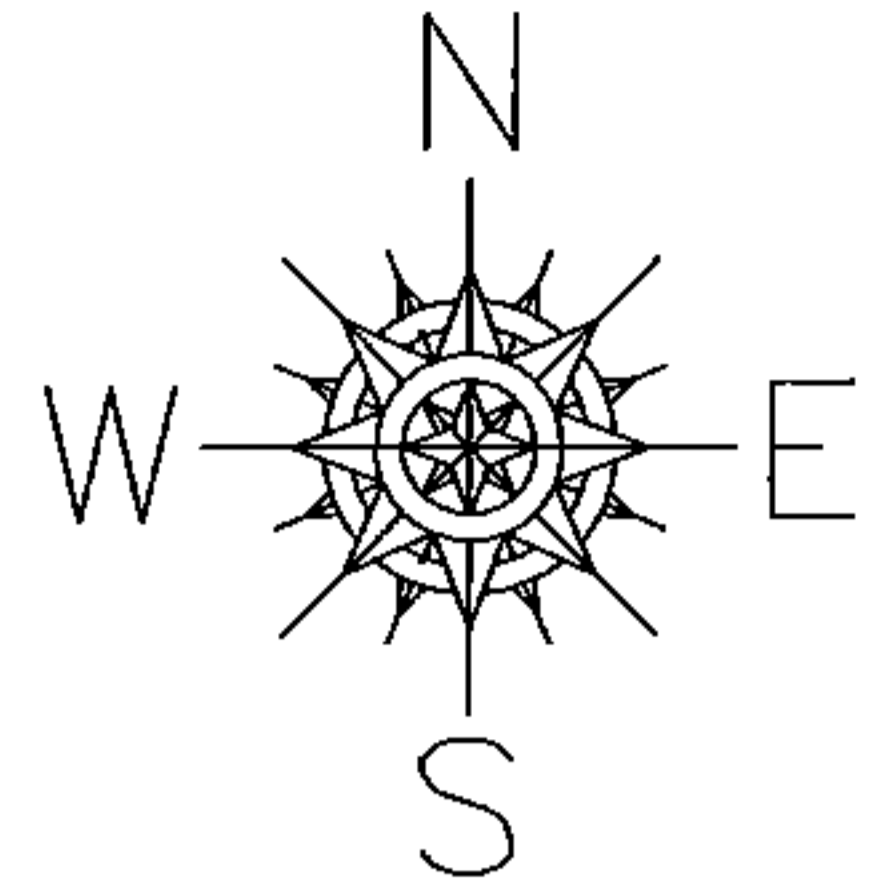


PARENT PARCEL: 17-07-005-000-013, -014

CHILD PARCEL: 17-07-005-000-015, -016

STARTING POINT: CENTERLINE OF PECK-WADSWORTH RD & O.L. 35

15-03375



**SPLITS/DEEDS PROCESSED**  
 LORAIN COUNTY TAX MAP DEPARTMENT  
 226 MIDDLE AVE. ELYRIA, OHIO

SURVEYED BY: THOMAS SNEZEK  
 CLOSURE: 0.00 ; 10.000  
 MAP PAGE(S): 17-A  
 APPROVED BY: JAH DATE: 6/10/2015  
 SCALE: 1" = 200' PRIOR INSTRUMENT: 20100359462