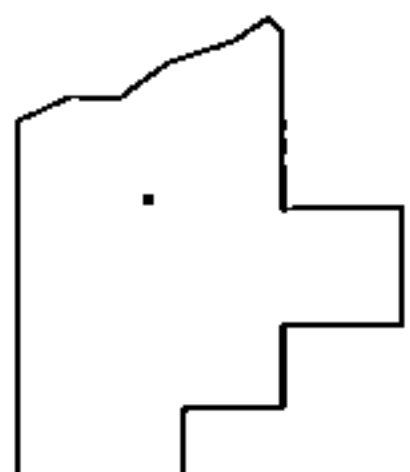
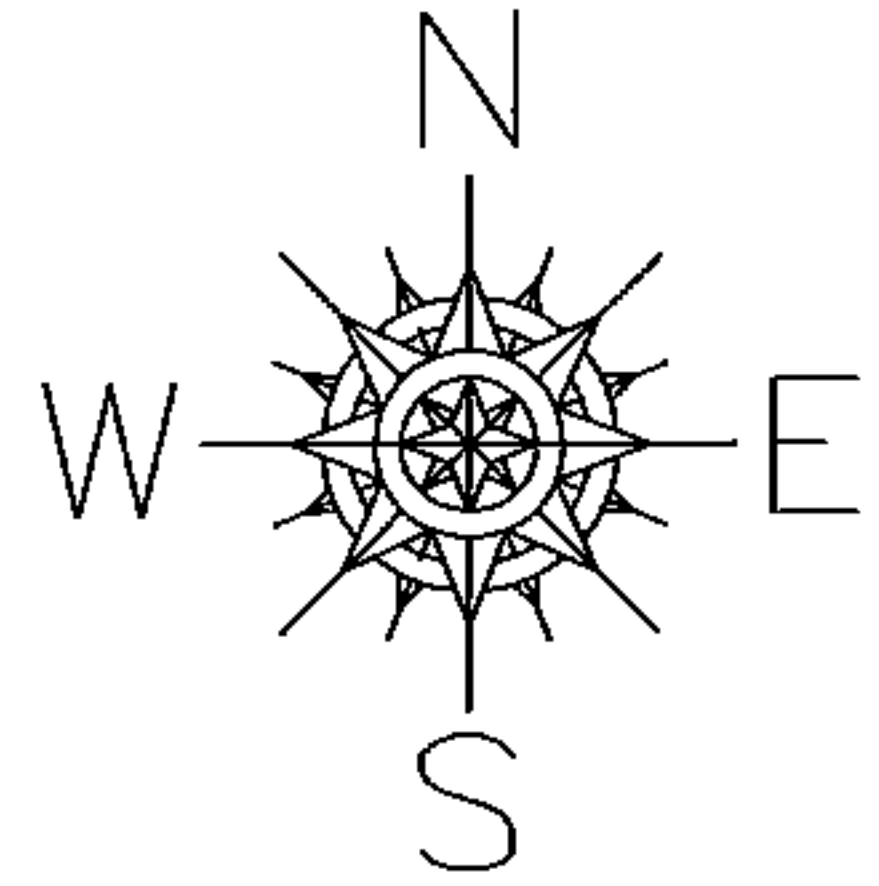
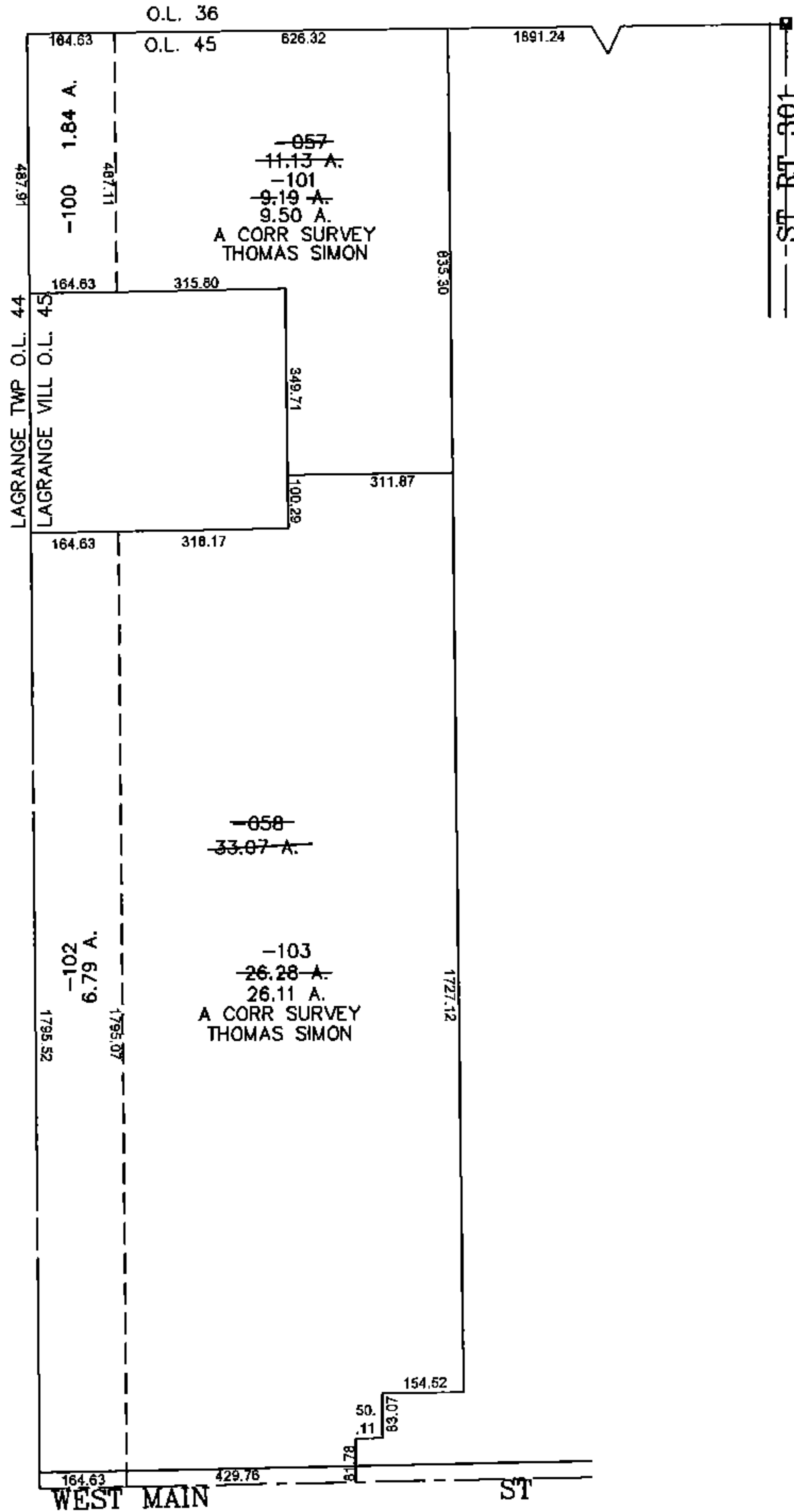


PARENT PARCEL: 15-00-045-101-057, -058

CHILD PARCEL: 15-00-045-101-100 THRU -103

STARTING POINT: CENTERLINE OF ST RT 301 & O.L. 45

15-03368



**SPLITS/DEEDS PROCESSED**

LORAIN COUNTY TAX MAP DEPARTMENT  
226 MIDDLE AVE. ELYRIA, OHIO

SURVEYED BY: THOMAS SIMON

CLOSURE: 0.00 : 10,000

MAP PAGE(S): 15-00-045-A

APPROVED BY: JAH DATE: 5-18-2015

SCALE: 1"= 400 PRIOR INST.: 19900111970