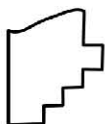
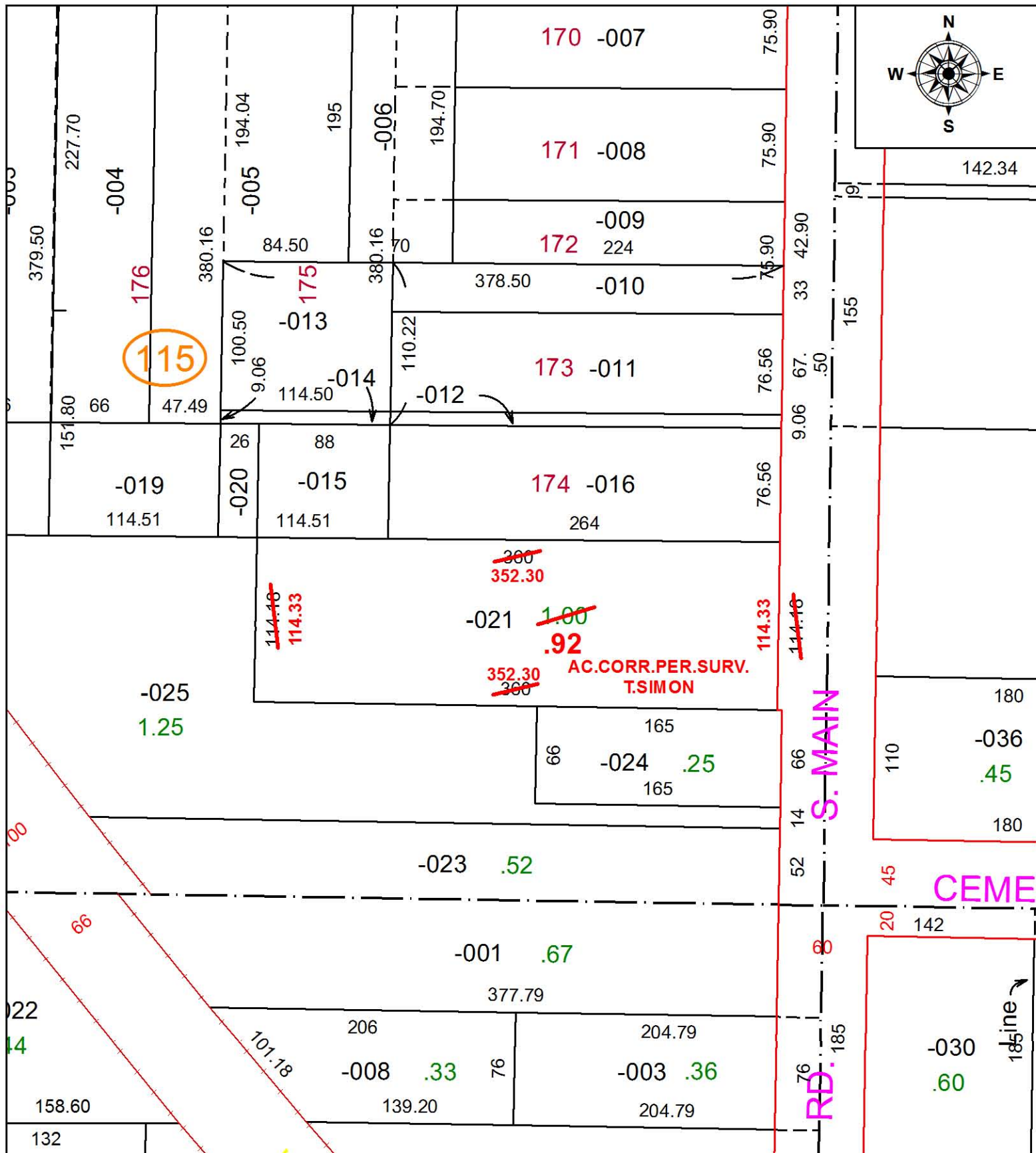


PARENT PARCEL: 18-00-027-115-021

CHILD PARCEL: XX-XX-XXX-XXX-XXX

STARTING POINT: INTERSECTION OF C/L OF 4TH ST. AND C/L OF S. MAIN ST.

16-03367-D



SPLITS/DEEDS PROCESSED

LORAIN COUNTY TAX MAP DEPARTMENT
226 MIDDLE AVE. ELYRIA, OH

SURVEYED BY: THOMAS SIMON

CLOSURE: 1: 10,0000

MAP PAGE(S): 18-00-027-D

APPROVED BY: RRM DATE: 1-26-16

SCALE: 1" = 200 PRIOR INSTRUMENT: 20150552824