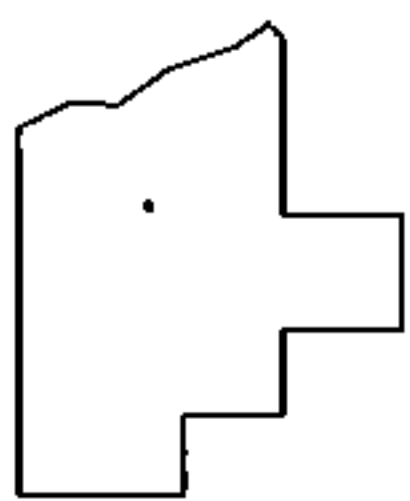
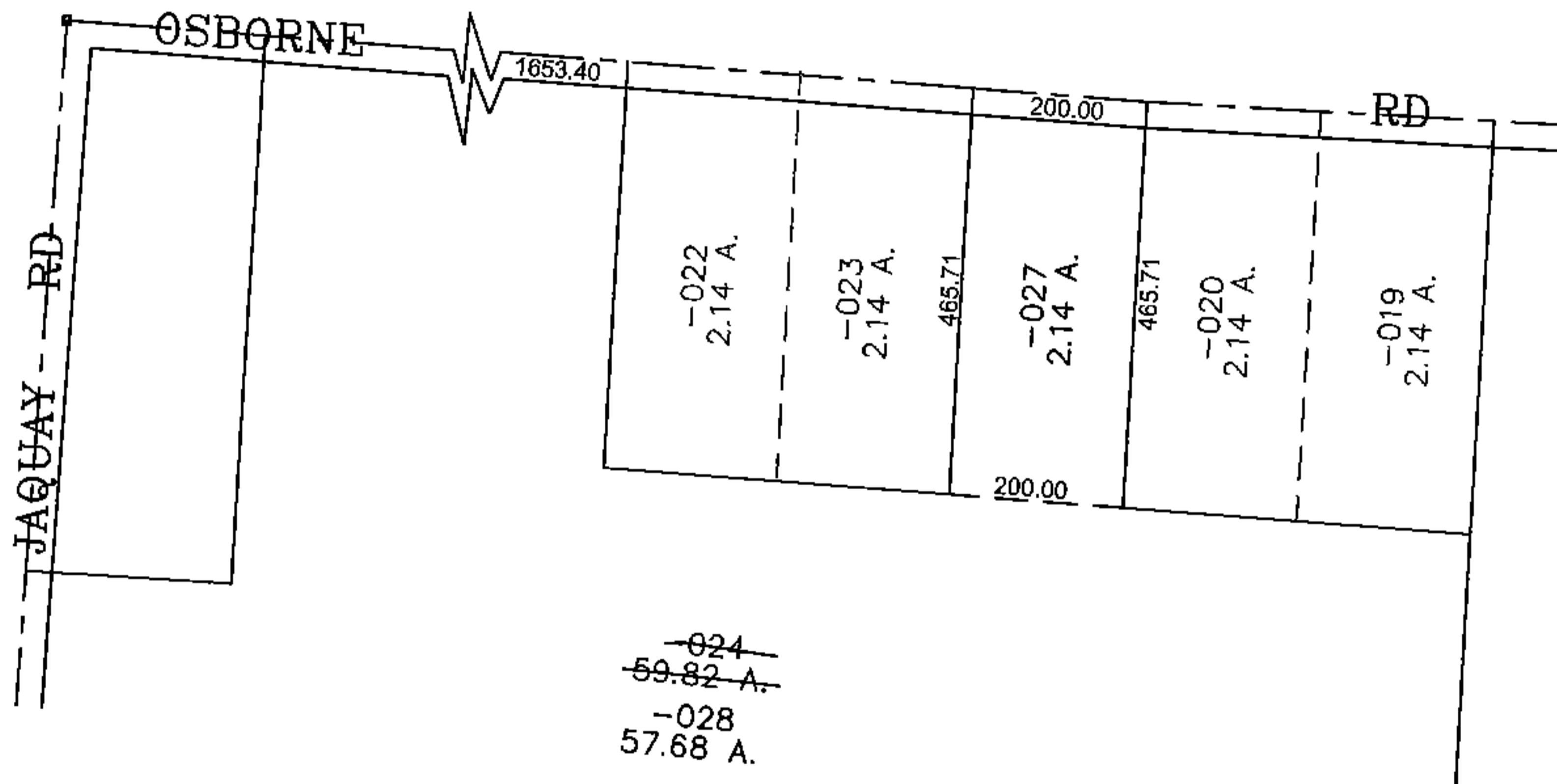
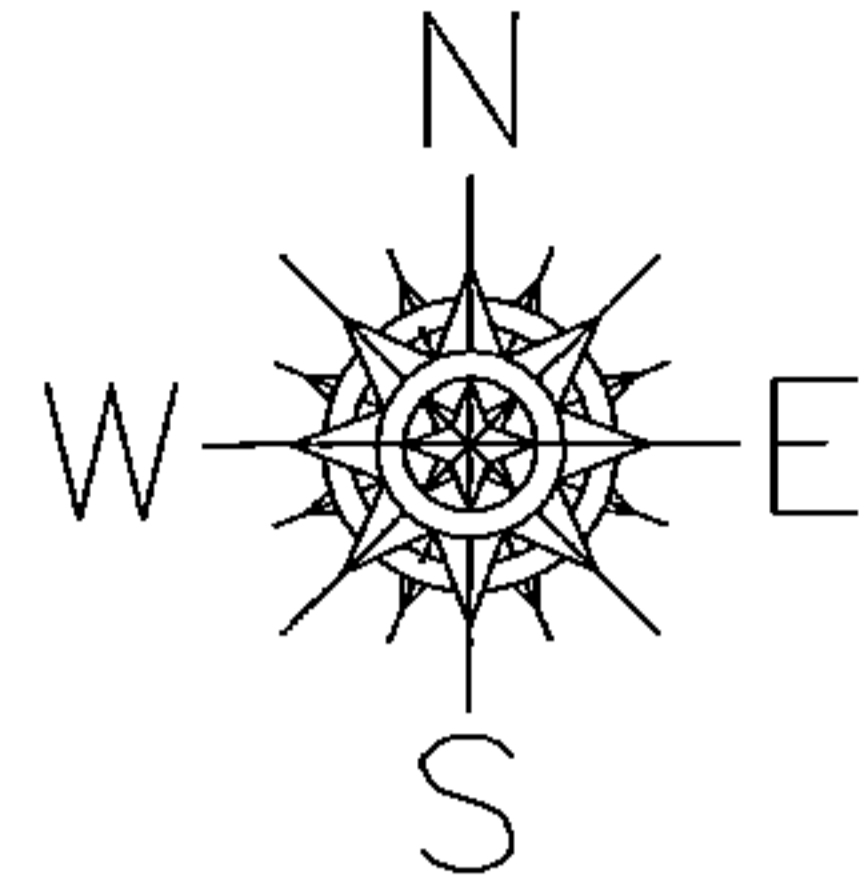


PARENT PARCEL: 12-00-059-000-024

CHILD PARCEL: 12-00-059-000-027, -028

STARTING POINT: CENTERLINE OF OSBORNE RD & JAQUAY RD

15-03362



SPLITS/DEEDS PROCESSED
 LORAIN COUNTY TAX MAP DEPARTMENT
 226 MIDDLE AVE. ELYRIA, OHIO

SURVEYED BY: GEORGE HOFMANN
 CLOSURE: 0.00 ; 10,000
 MAP PAGE(S): 12-00-059-A
 APPROVED BY: JAH DATE: 4/17/2015
 SCALE: 1" = 300 PRIOR INSTRUMENT: 20060180558