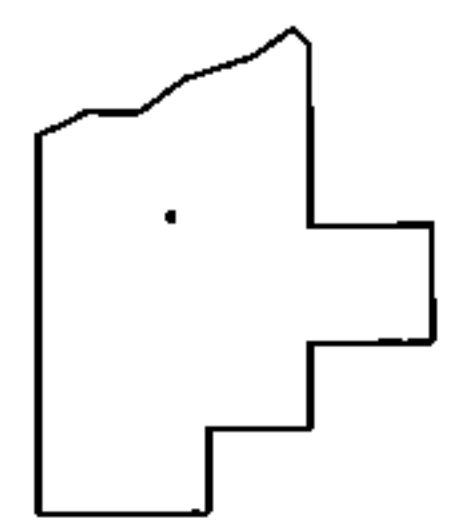
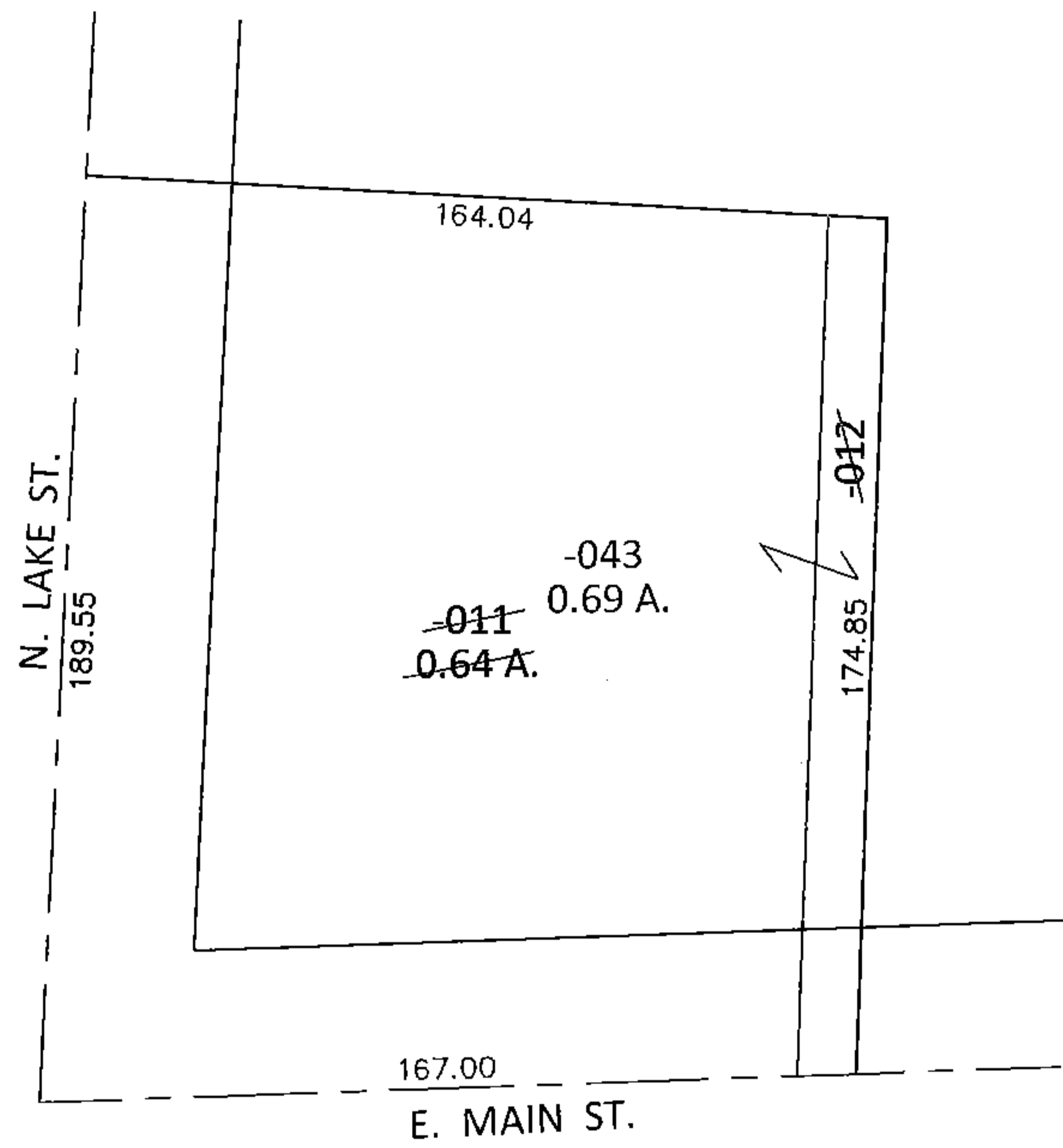
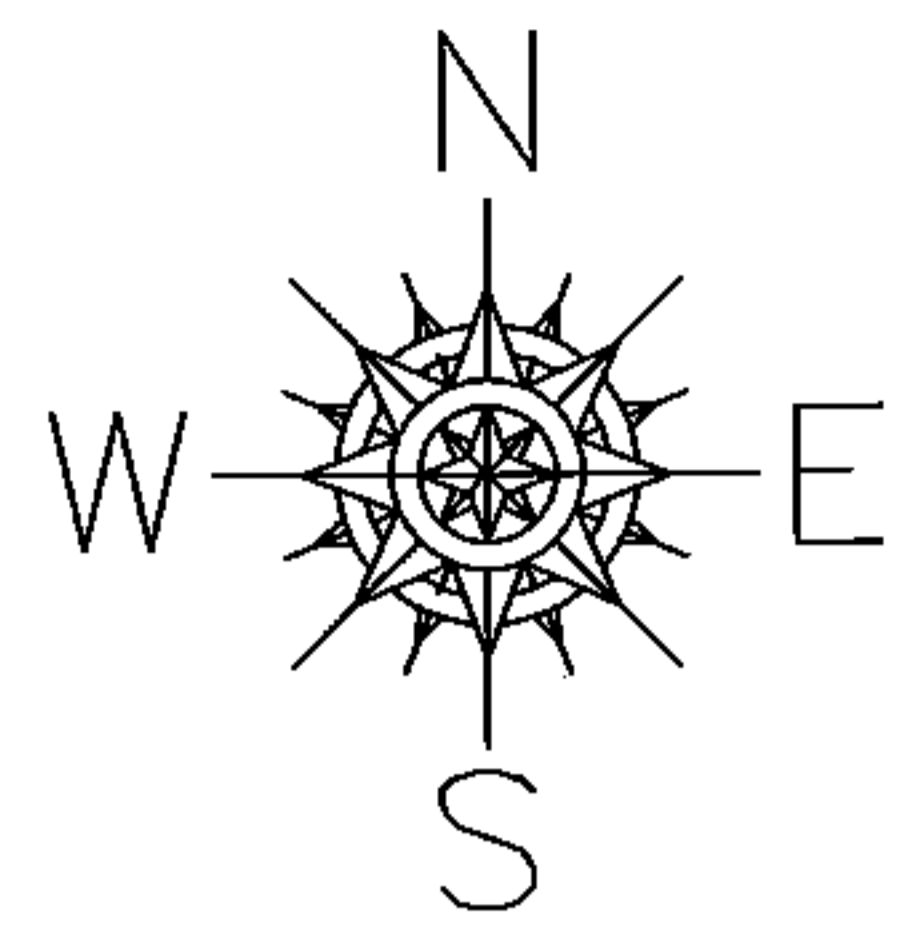


PARENT PARCEL: 05-00-011-101-011, -012
CHILD PARCEL: 05-00-011-101-043
STARTING POINT: INTERSECTION OF C/L OF E. MAIN ST. AND C/L OF N. LAKE ST.

16-03362-X

COMBINATION

~~05-00-011-101-011~~ ~~05-00-011-101-012~~
~~0.64 A.~~ ~~10.65 X 264~~
05-00-011-101-043
0.69 A.



SPLITS/DEEDS PROCESSED
LORAIN COUNTY TAX MAP DEPARTMENT
226 MIDDLE AVE. ELYRIA, OHIO

SURVEYED BY: GEORGE A. HOFFMAN
CLOSURE: .01:10,000
MAP PAGE(S): 5-00-011-A
APPROVED BY: RRM DATE: 1-15-16
SCALE: 1"= 50' PRIOR INST.: 20120426273