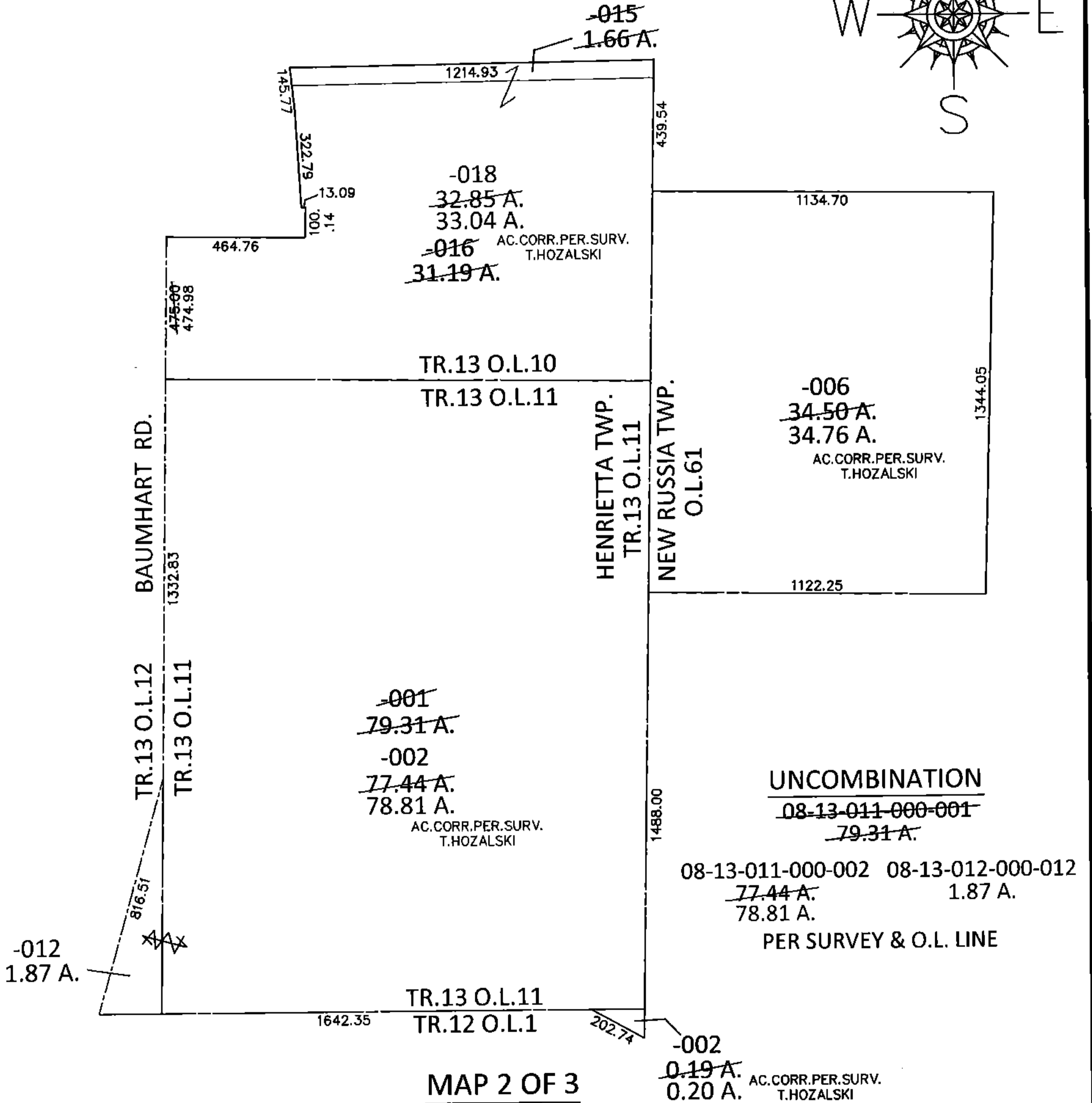
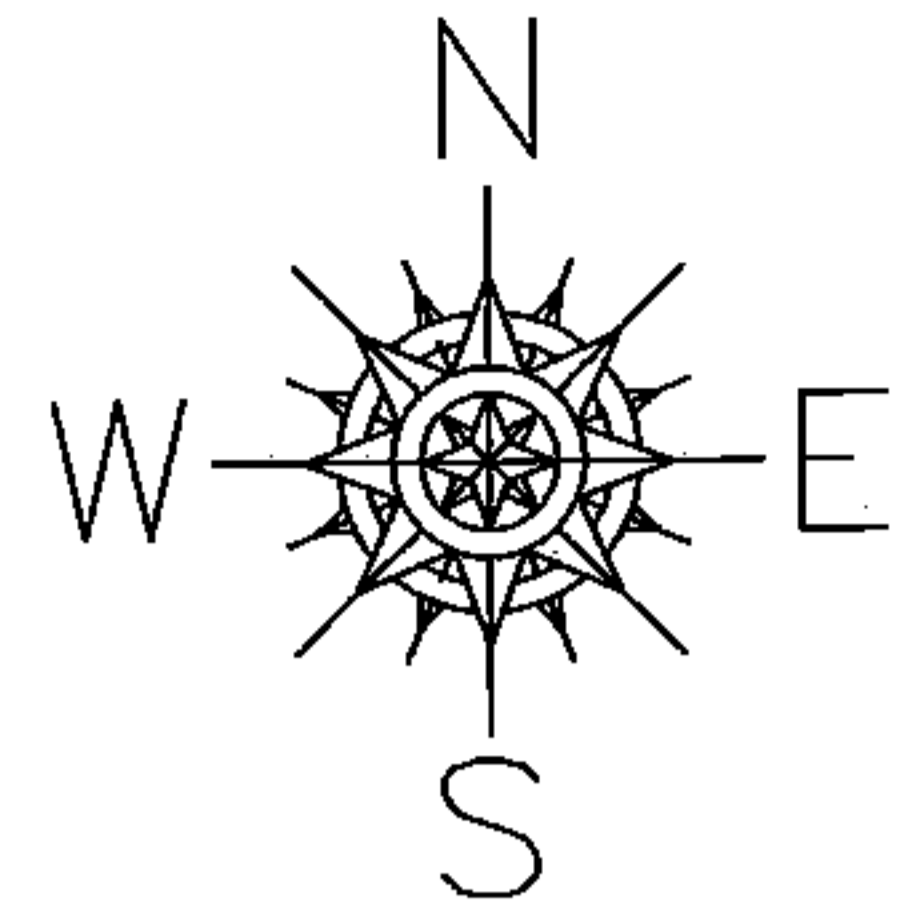


PARENT PARCEL: 08-12-001-000-002, 08-13-010-000-015, -016, 08-13-011-000-001, 09-00-061-000-006

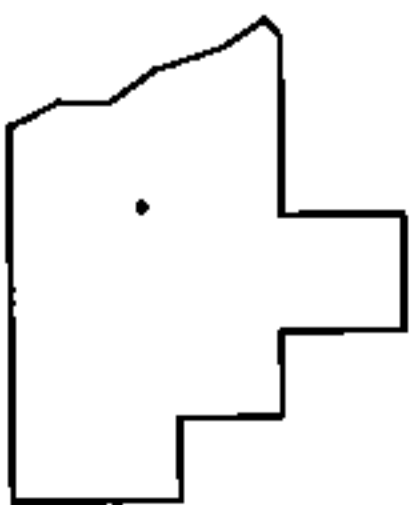
CHILD PARCEL: 08-12-001-000-002, 08-13-010-000-018, 08-13-011-000-002, 08-13-012-000-012, 09-00-061-000-006

STARTING POINT: NORTHWEST CORNER OF TR.13 O.L.11

16-03360-A



MAP 2 OF 3



SPLITS/DEEDS PROCESSED

LORAIN COUNTY TAX MAP DEPARTMENT
226 MIDDLE AVE. ELYRIA, OHIO

SURVEYED BY: TIMOTHY D. HOZALSKI

CLOSURE: .01:10,000

MAP PAGE(S): 8-H

APPROVED BY: RRM DATE: 1-13-16

SCALE: 1"= 500 PRIOR INST.: 20140509635