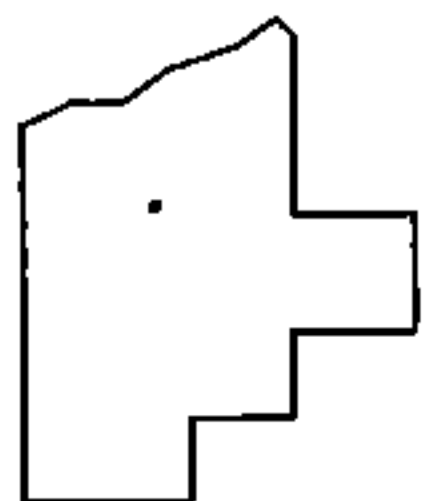
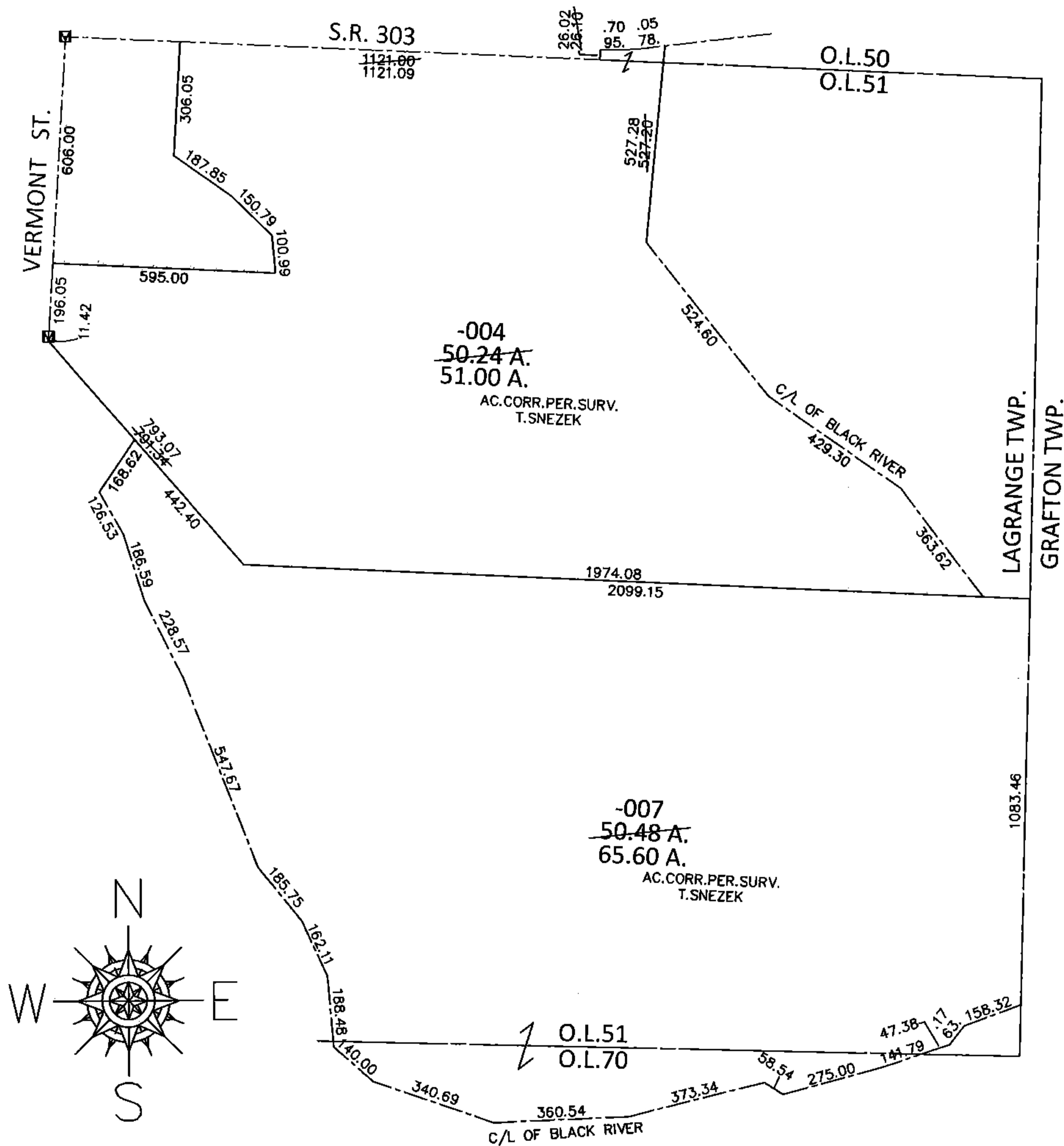


PARENT PARCEL: 15-00-051-000-004, -007

CHILD PARCEL: \_\_\_\_\_

STARTING POINT: AT A MON BOX AT THE INTERSECTION OF C/L OF S.R.303 AND C/L OF VERMONT ST.

16-03358-A



**SPLITS/DEEDS PROCESSED**

LORAIN COUNTY TAX MAP DEPARTMENT  
226 MIDDLE AVE. ELYRIA, OHIO

SURVEYED BY: THOMAS M. SNEZEK  
 CLOSURE: .01:10,000  
 MAP PAGE(S): 15-H  
 APPROVED BY: RRM DATE: 1-19-16  
 SCALE: 1" = 400 PRIOR INST.: 20130460202