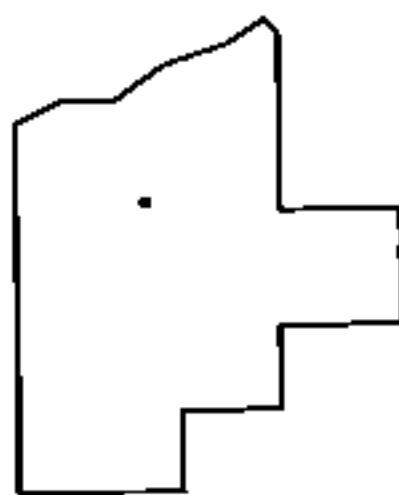
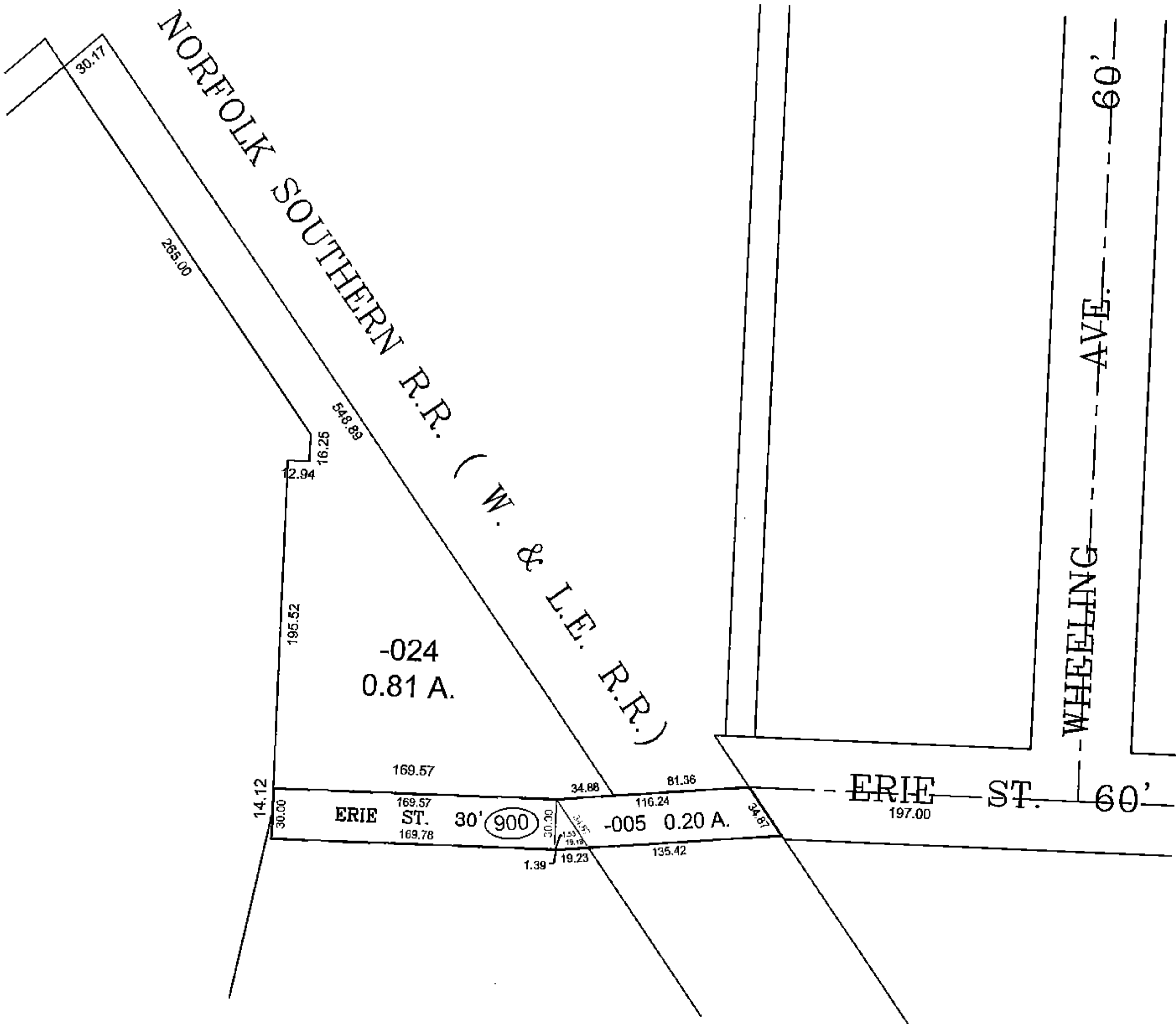
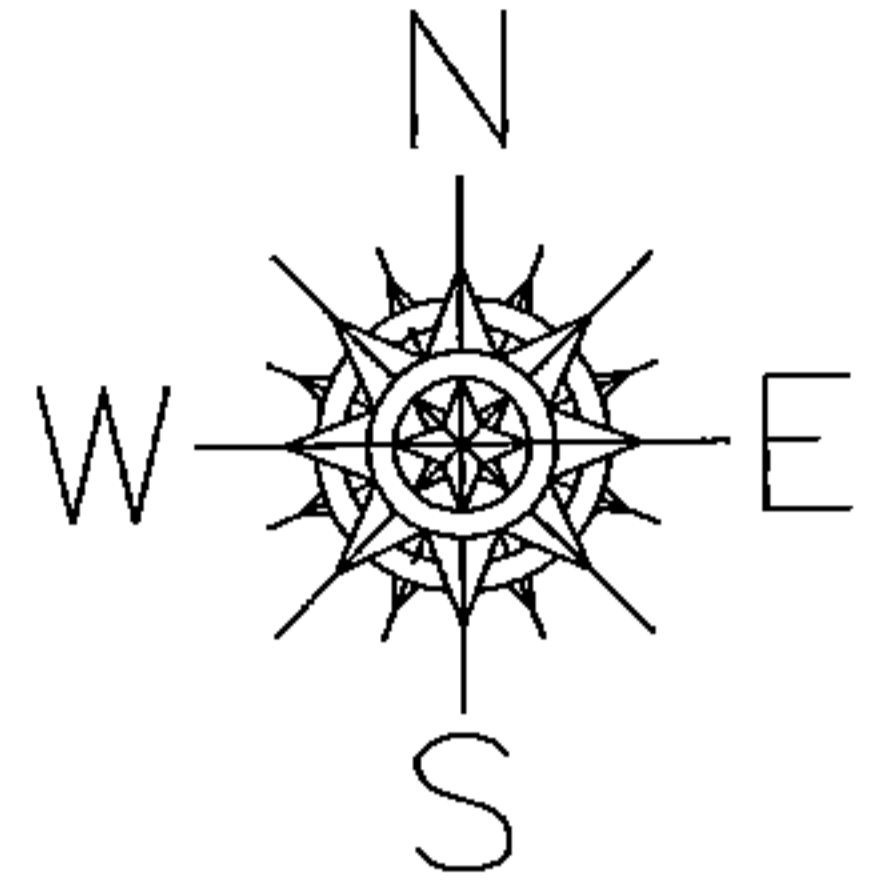


PARENT PARCEL: ADD TO DUPLICATE  
 CHILD PARCEL: 18-00-027-900-005  
 STARTING POINT: ERIE ST. EXTENTION DEDICATION PLAT VOL. 13 PG. 22

16-03355-C

ADD TO DUPLICATE  
 18-00-027-900-005  
 0.20 A.  
 PER P.V. 13 PG. 22



SPLITS/DEEDS PROCESSED  
 LORAIN COUNTY TAX MAP DEPARTMENT  
 226 MIDDLE AVE. ELYRIA, OHIO

SURVEYED BY: T. W. LAUNDON  
 CLOSURE: 0.01 : 10.000  
 MAP PAGE(S): 18-00-027  
 APPROVED BY: TJS DATE: 1/6/16  
 SCALE: 1" = 100 PRIOR INSTRUMENT: DV XXXX/XXX