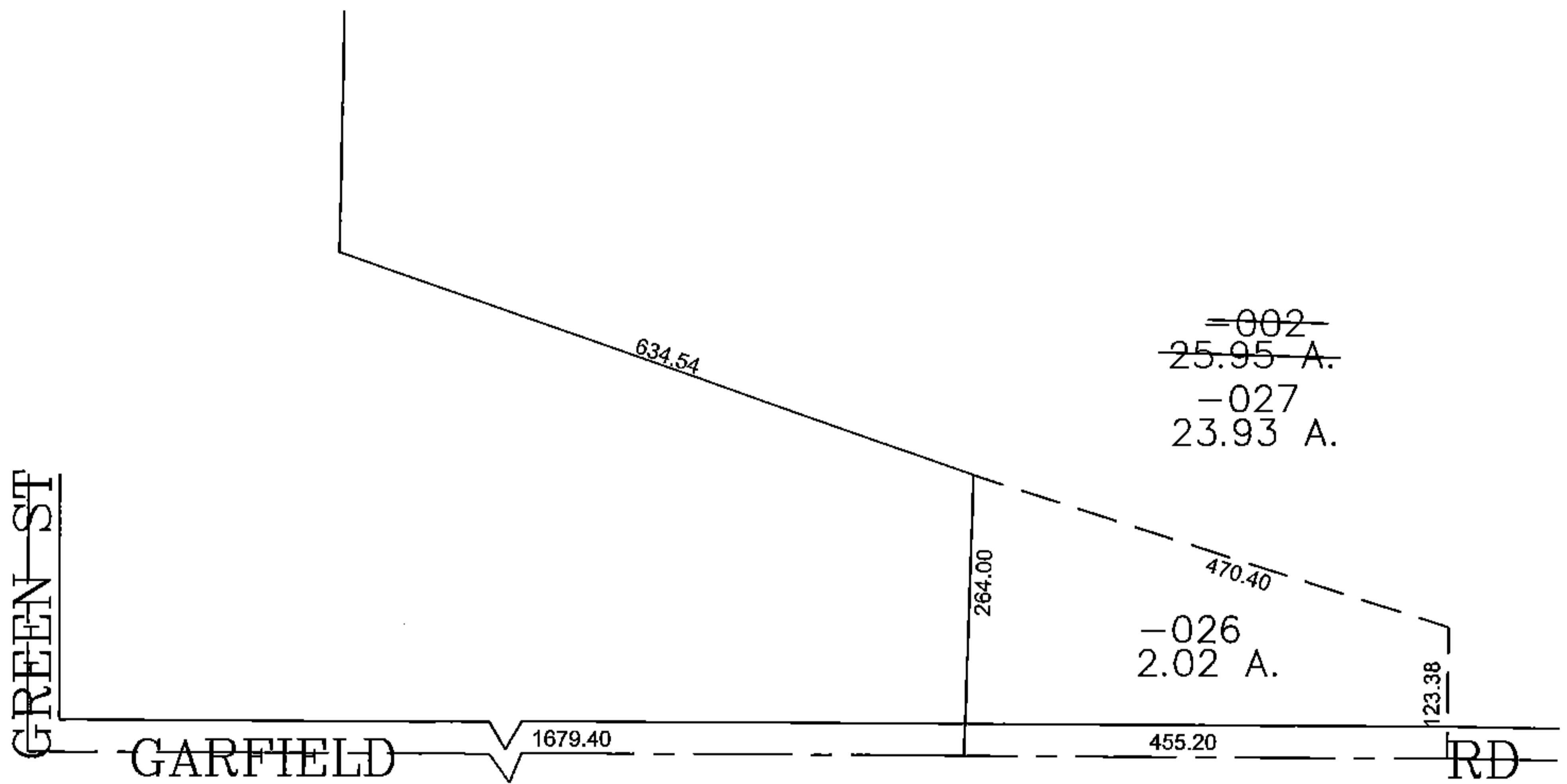
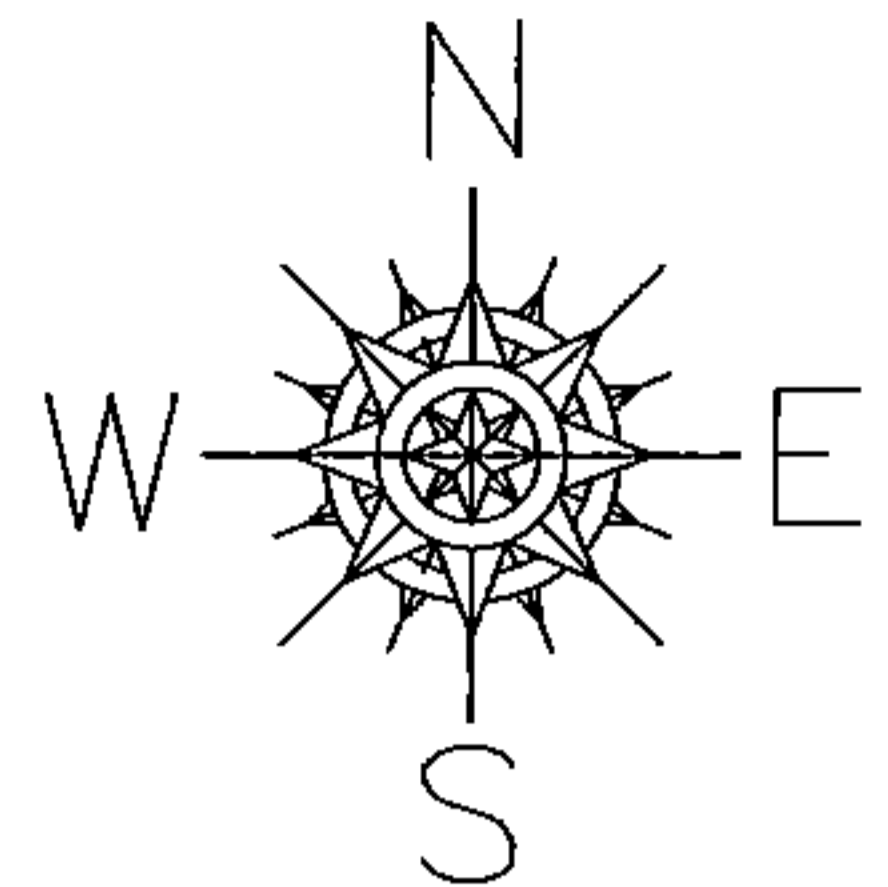


PARENT PARCEL: 08-14-010-000-002

CHILD PARCEL: 08-14-010-000-026, -027

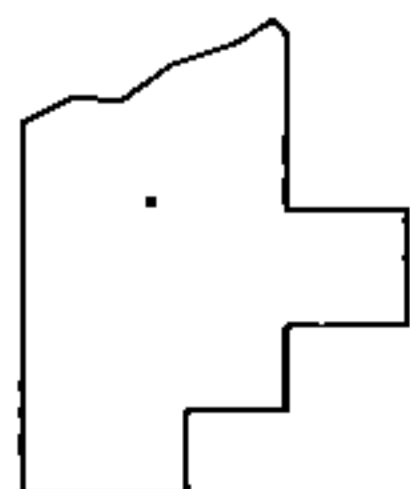
STARTING POINT: CENTERLINE OF GREEN ST & GARFIELD RD

15-03347



~~=002~~
~~25.95 A.~~
-027
23.93 A.

-026
2.02 A.



SPLITS/DEEDS PROCESSED
LORAIN COUNTY TAX MAP DEPARTMENT
226 MIDDLE AVE. ELYRIA, OHIO

SURVEYED BY: THOMAS A SIMON
CLOSURE: 0.00 : 10.000
MAP PAGE(S): 8-A
APPROVED BY: JAH DATE: 2/11/2015
SCALE: 1" = 200 PRIOR INSTRUMENT: 20140526776