

PARENT PARCEL: ADD TO DUPLICATE

CHILD PARCEL: 09-00-087-101-050 & 09-00-087-102-021

STARTING POINT: 2.7' STRIP FROM NORTH LINE OF E. COLLEGE ST. TO THE

SOUTH LINE OF E. LORAIN ST. ON BOTH THE EAST & WEST SIDE OF ORCHARD ST.

15-03347-A

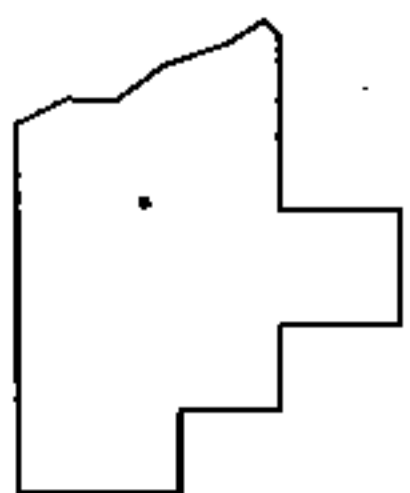
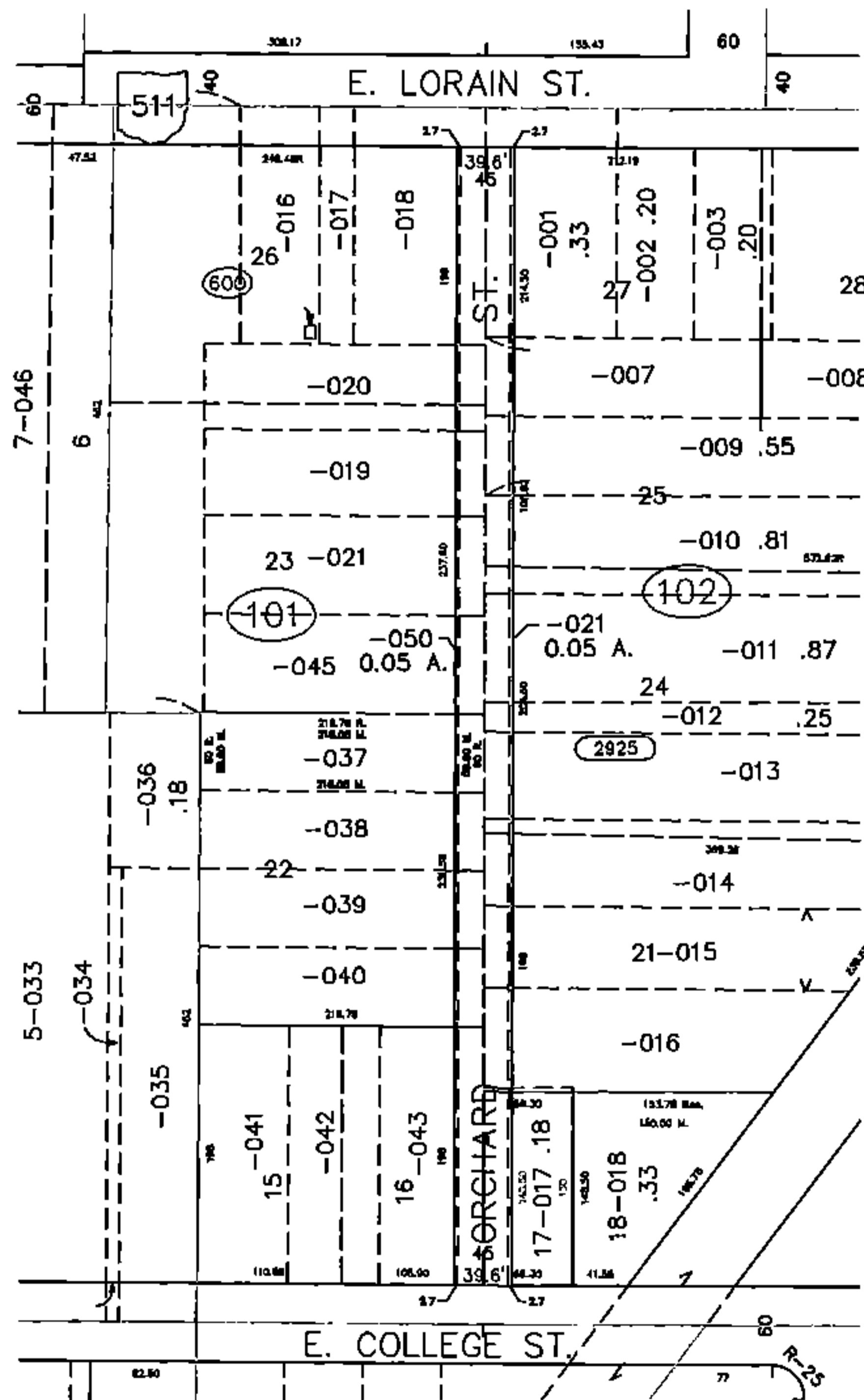
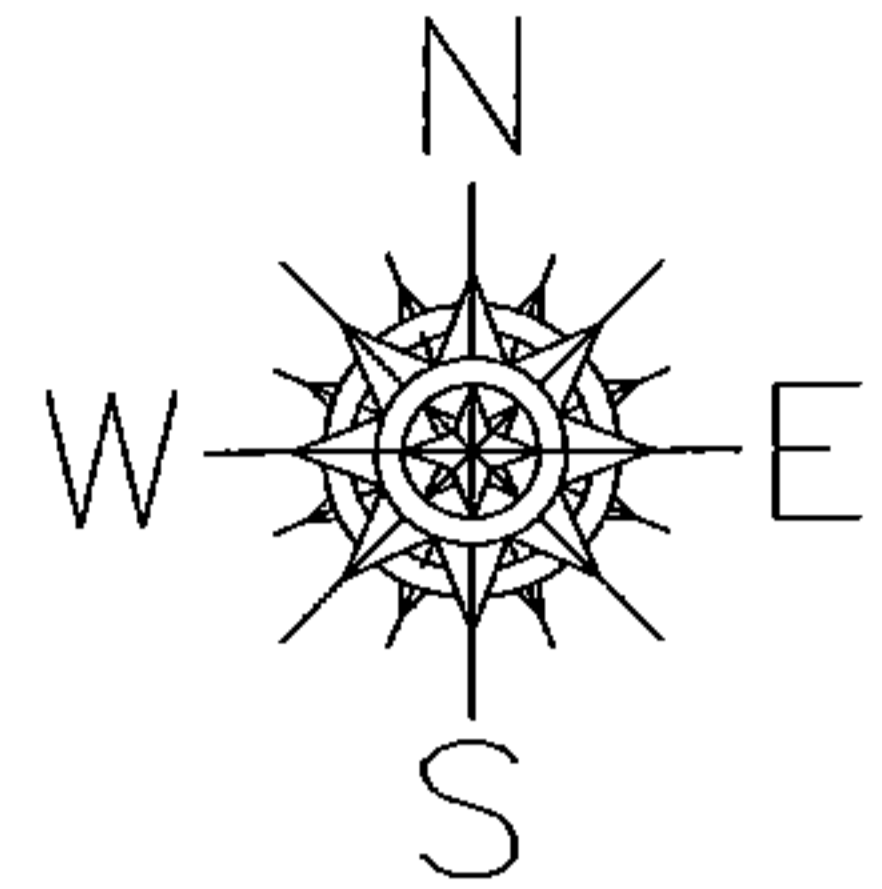
ADD TO DUPLICATE

09-00-087-101-050
0.05 A.

&

09-00-087-102-021
0.05 A.

PER DV. 311 PG. 372-373



SPLITS/DEEDS PROCESSED
LORAIN COUNTY TAX MAP DEPARTMENT
226 MIDDLE AVE. ELYRIA, OHIO

SURVEYED BY: NA
CLOSURE: NA
MAP PAGE(S): 09-00-087
APPROVED BY: TJS DATE: 12/18/15
SCALE: 1" = 200' PRIOR INSTRUMENT: DV XXXX/XXX