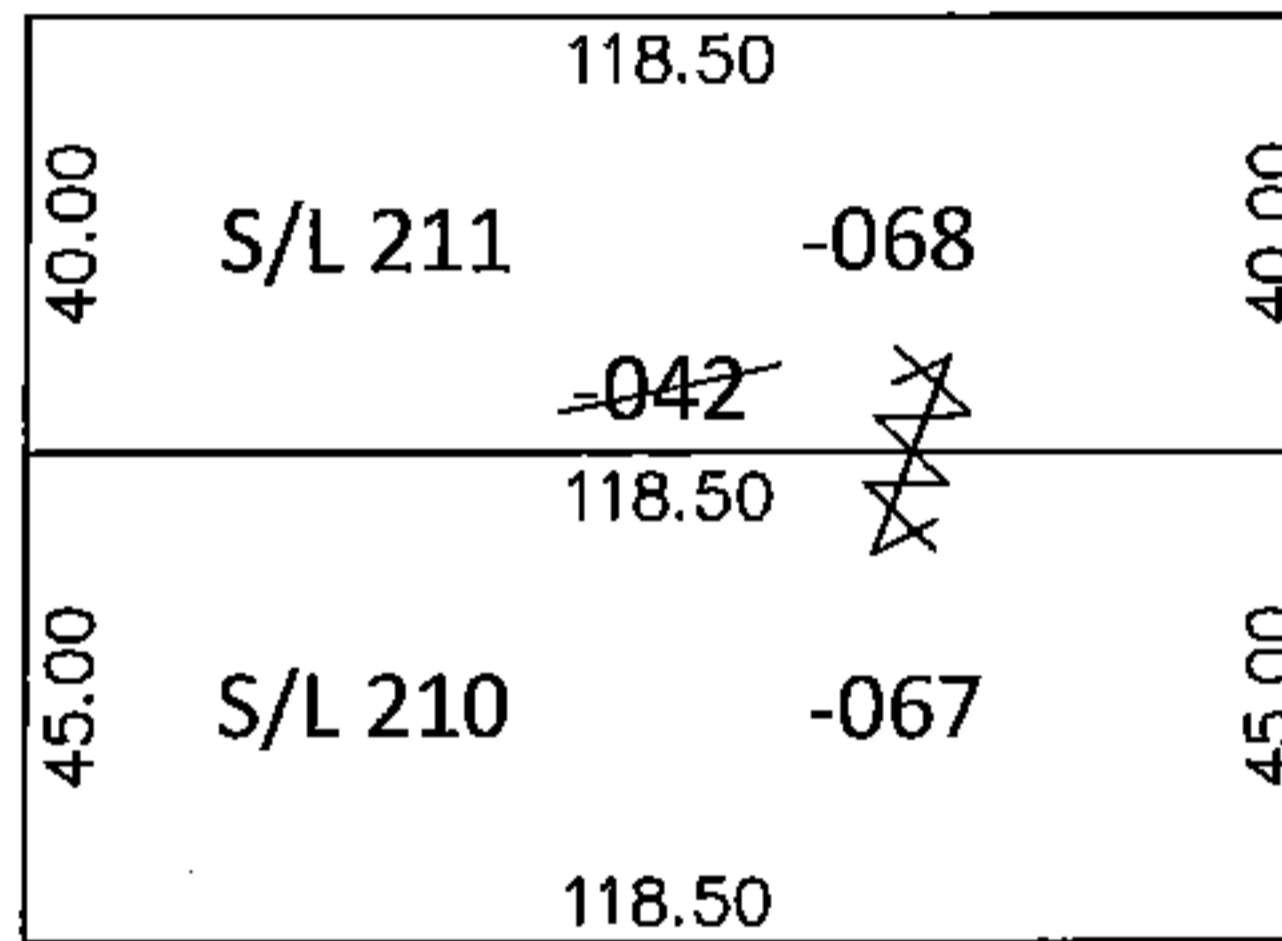
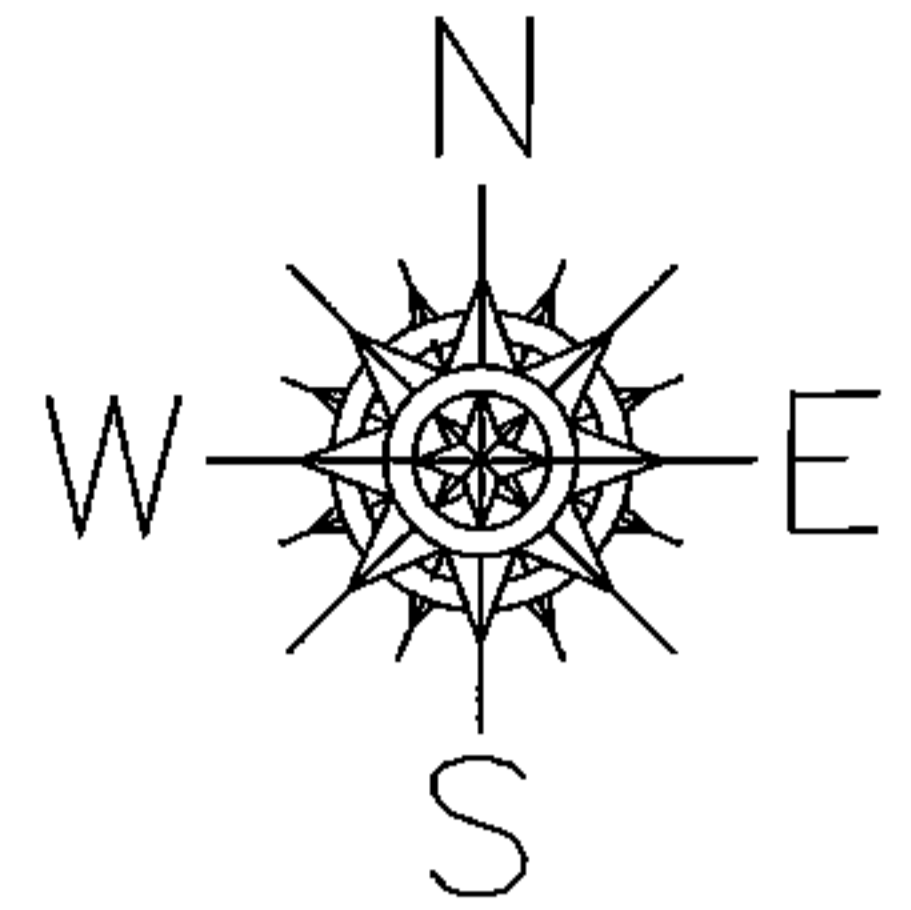


PARENT PARCEL: 03-00-042-110-042

CHILD PARCEL: 03-00-042-110-067, -068

STARTING POINT: S/L'S 210 & 211 IN LAKE BREEZE ALLOT. (VOL.10 PG.21)

15-03345-U



ROBERTS ST.

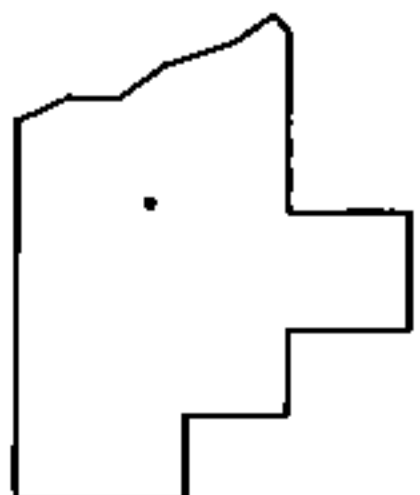
UNCOMBINATION

~~03-00-042-110-042~~

~~85 X 119~~

03-00-042-110-067 03-00-042-110-068
45 X 118.50 40 X 118.50

CORR.PER.PRIOR DEEDS



SPLITS/DEEDS PROCESSED

LORAIN COUNTY TAX MAP DEPARTMENT
226 MIDDLE AVE. ELYRIA, OHIO

SURVEYED BY: N/A
CLOSURE: N/A
MAP PAGE(S): 3-00-042-A
APPROVED BY: RRM DATE: 12-17-15
SCALE: 1"= 50' PRIOR INST.: 20150553016