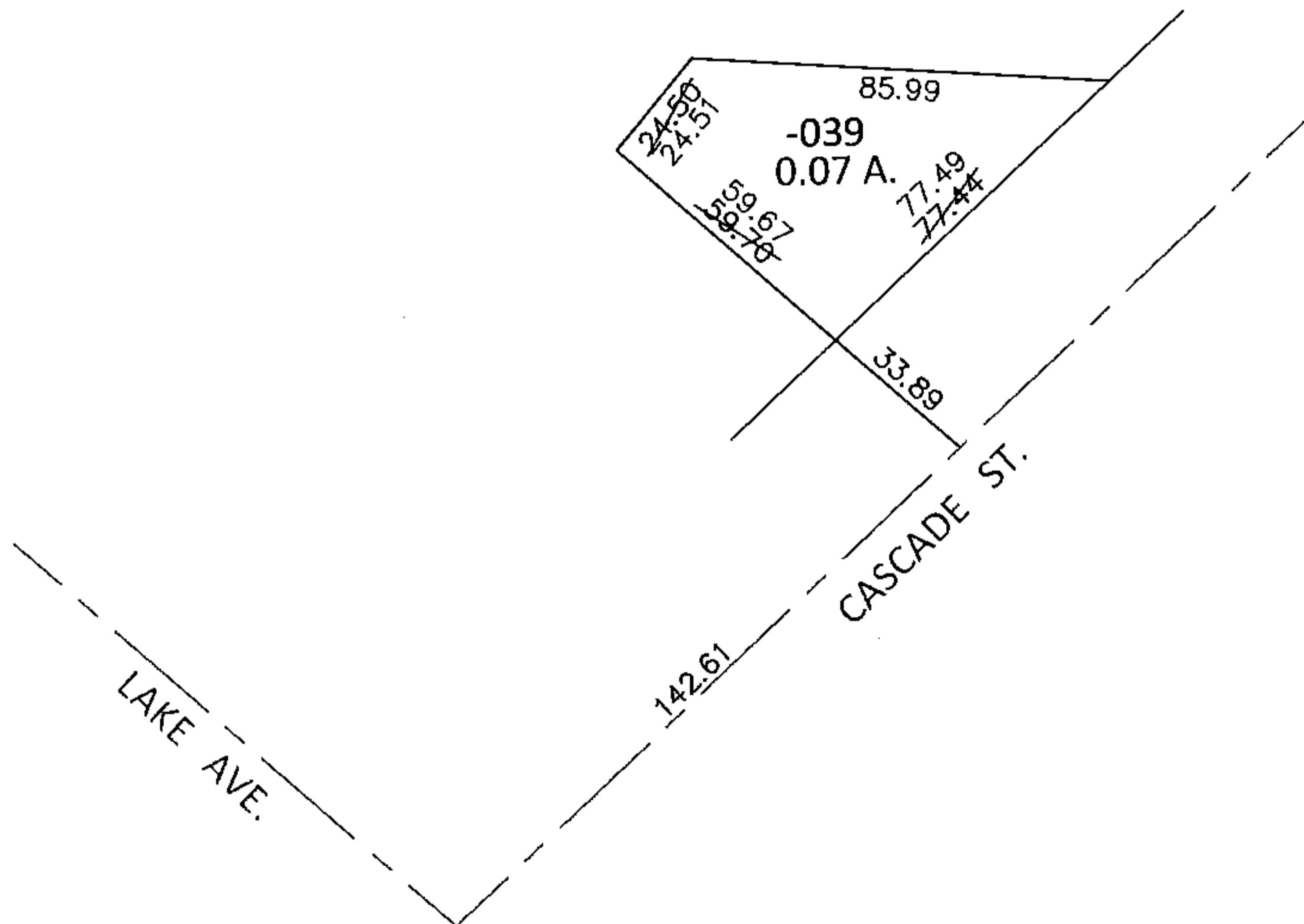
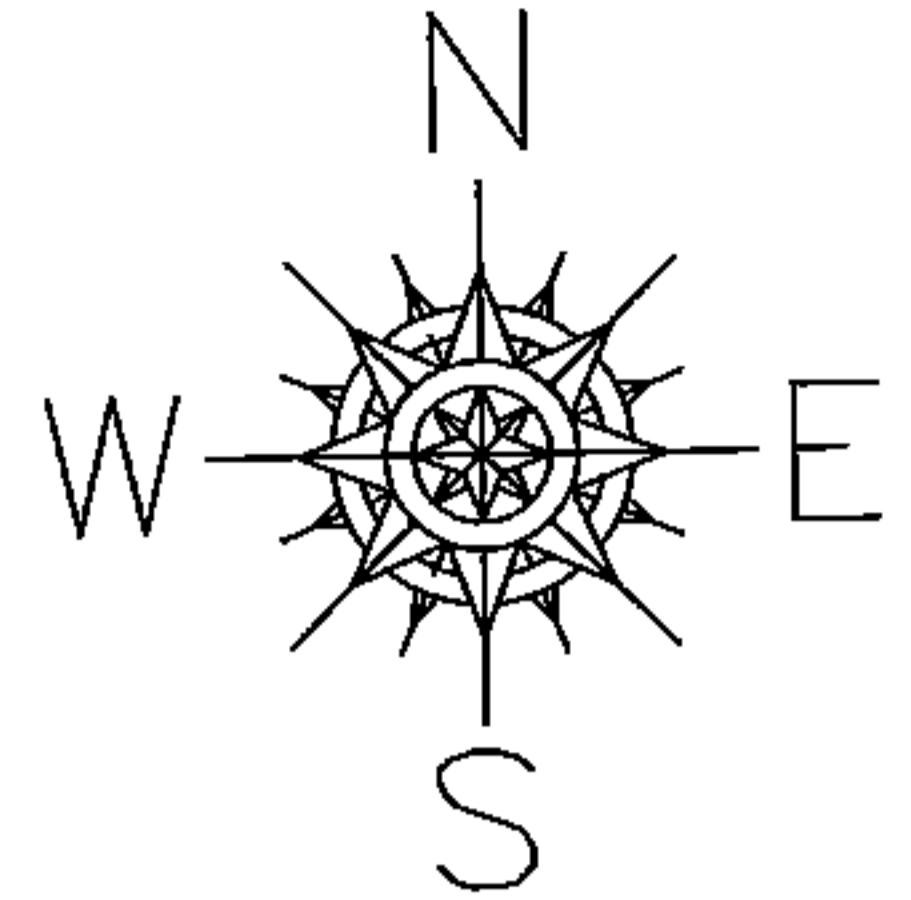


PARENT PARCEL: 06-24-158-000-039

CHILD PARCEL: _____

STARTING POINT: INTERSECTION OF C/L OF CASCADE ST. AND C/L OF LAKE AVE.

15-03344-X



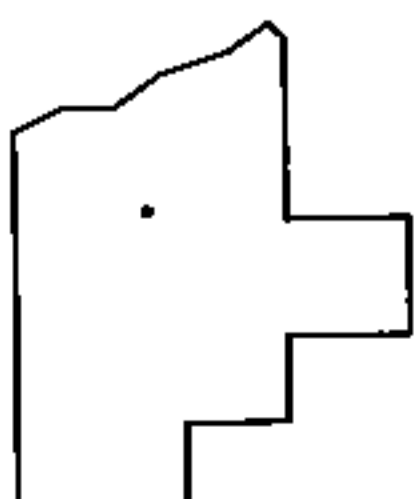
FRONTAGE & DEPTH TO ACREAGE CORRECTION

06-24-158-000-039

0.07 A.

~~77.40 X 59~~

PER SURVEY BY W.BARBOSA



SPLITS/DEEDS PROCESSED

LORAIN COUNTY TAX MAP DEPARTMENT
226 MIDDLE AVE. ELYRIA, OHIO

SURVEYED BY: WILFREDO BARBOSA

CLOSURE: .01:10,000

MAP PAGE(S): 6-24

APPROVED BY: RRM DATE: 12-11-15

SCALE: 1"=50' PRIOR INST.: 20150542621