

PARENT PARCEL: ADD TO DUPLICATE
CHILD PARCEL: 12-00-040-900-001
STARTING POINT: PLAT VOL. 19 PG. 19 WEST RIVER SUBDIVISION (RIVERVIEW DR. 60')

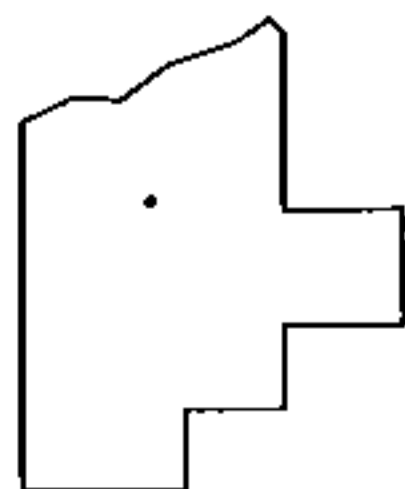
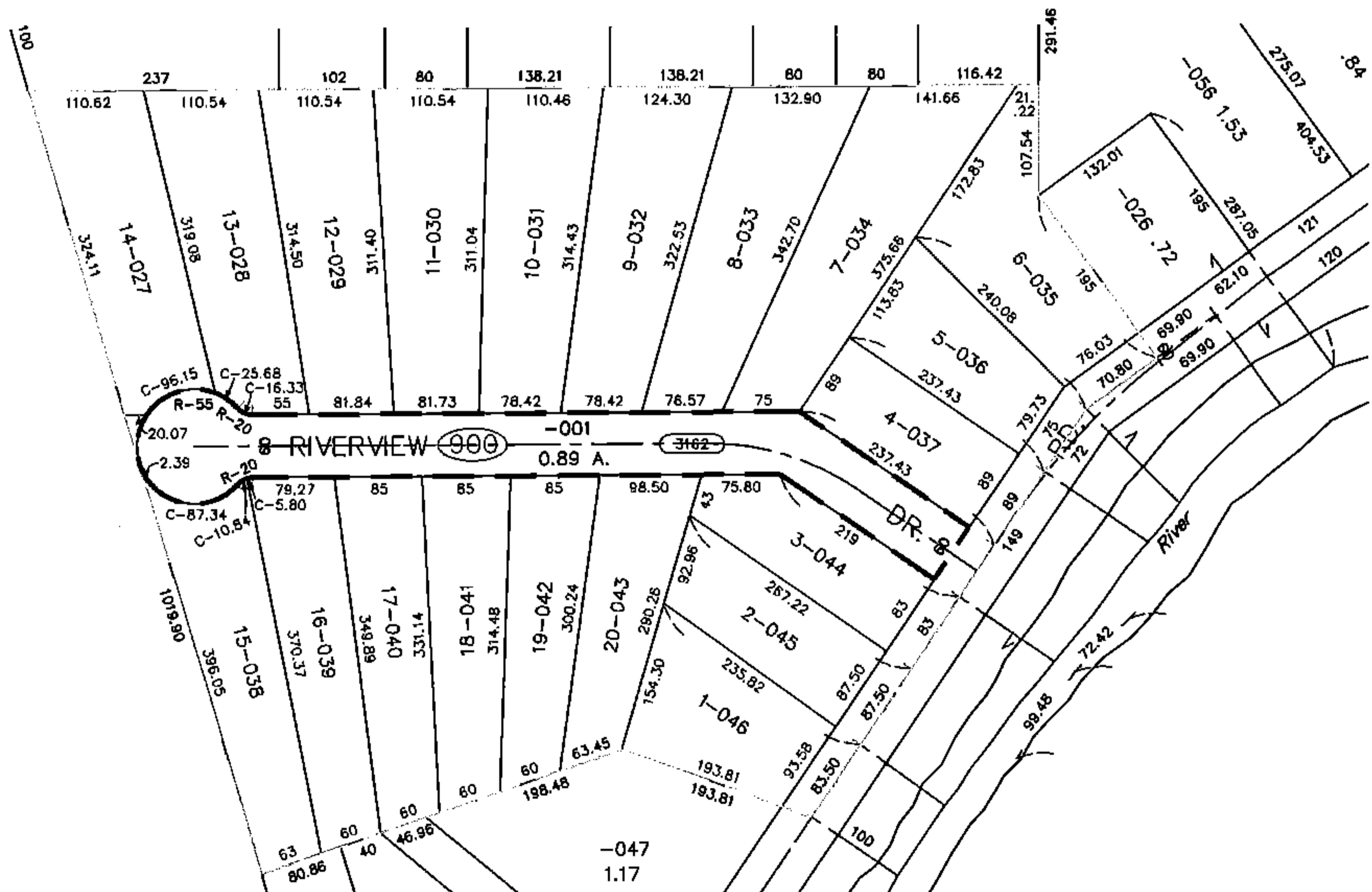
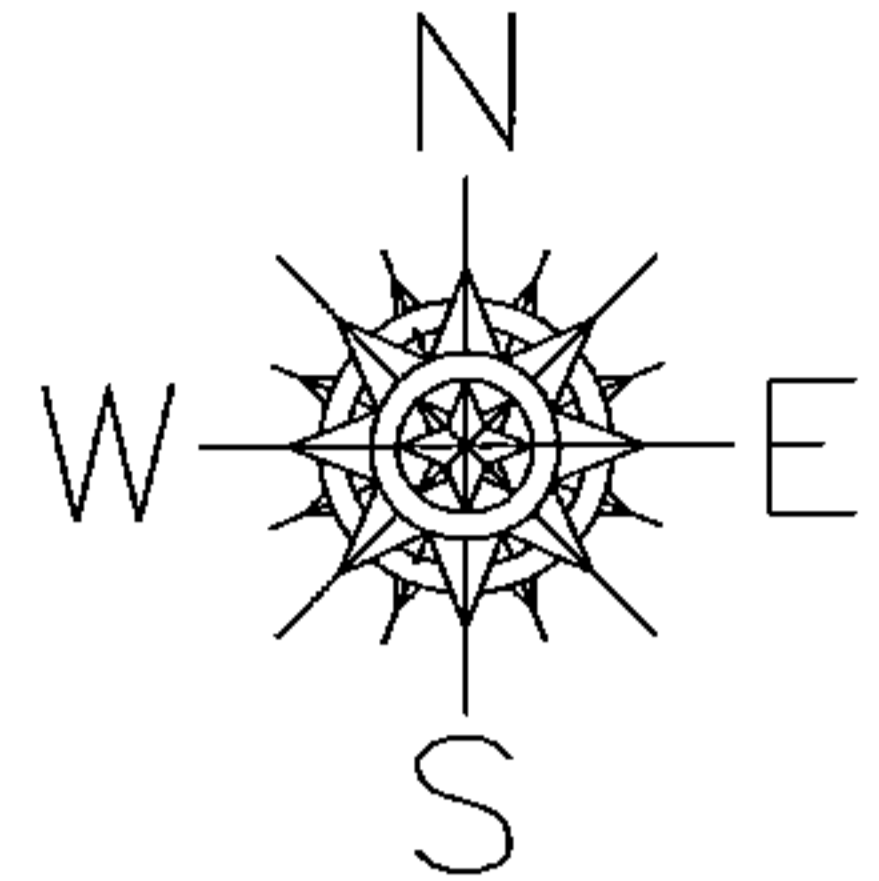
15-03343-A

ADD TO DUPLICATE

12-00-040-900-001

0.89 A.

PER PV. 19 PG. 19



SPLITS/DEEDS PROCESSED

LORAIN COUNTY TAX MAP DEPARTMENT
226 MIDDLE AVE. ELYRIA, OHIO

SURVEYED BY: JOHN PARDRE
CLOSURE: NA
MAP PAGE(S): 12-00-040
APPROVED BY: TJS DATE: 12/11/15
SCALE: 1" = 200 PRIOR INST.: PV. 19 PG. 19