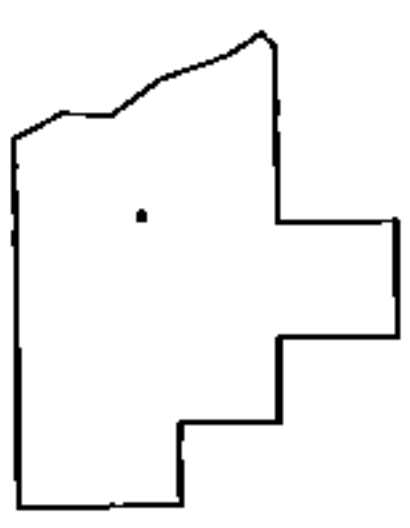
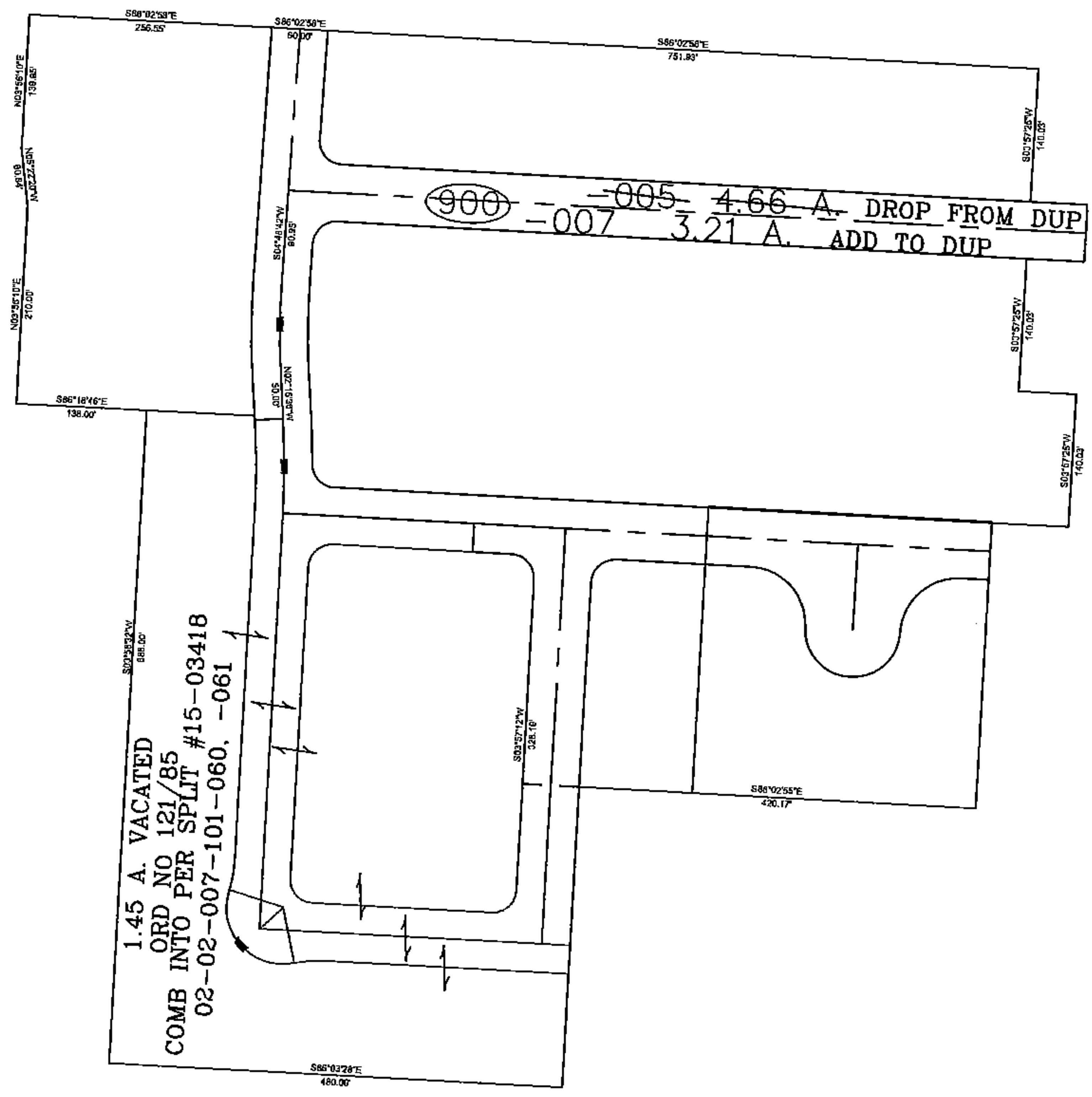
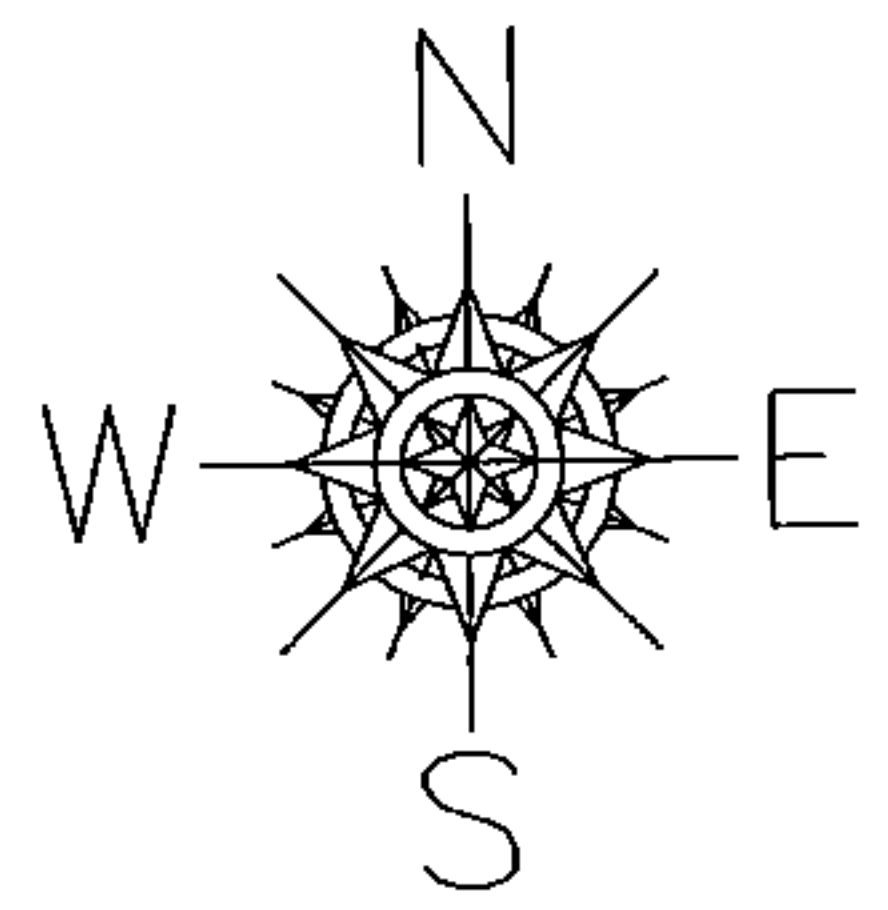


PARENT PARCEL: 02-02-007-900-005 DROP FROM DUP
 CHILD PARCEL: 02-02-007-900-007 ADD TO DUP
 STARTING POINT: SIDELINE OF LEAVITT RD & SOUTHWEST CORNER OF BLOCK "A" IN SUBD.

15-03341-X



SPLITS/DEEDS PROCESSED
 LORAIN COUNTY TAX MAP DEPARTMENT
 226 MIDDLE AVE. ELYRIA, OHIO

SURVEYED BY: DALE HAYWOOD & M HURA
 CLOSURE: 0.00 : 10.000
 MAP PAGE(S): 02-02-007-A
 APPROVED BY: JAH/TJS DATE: 12/9/2015
 SCALE: 1" = 200 PRIOR INSTRUMENT: 20150567480