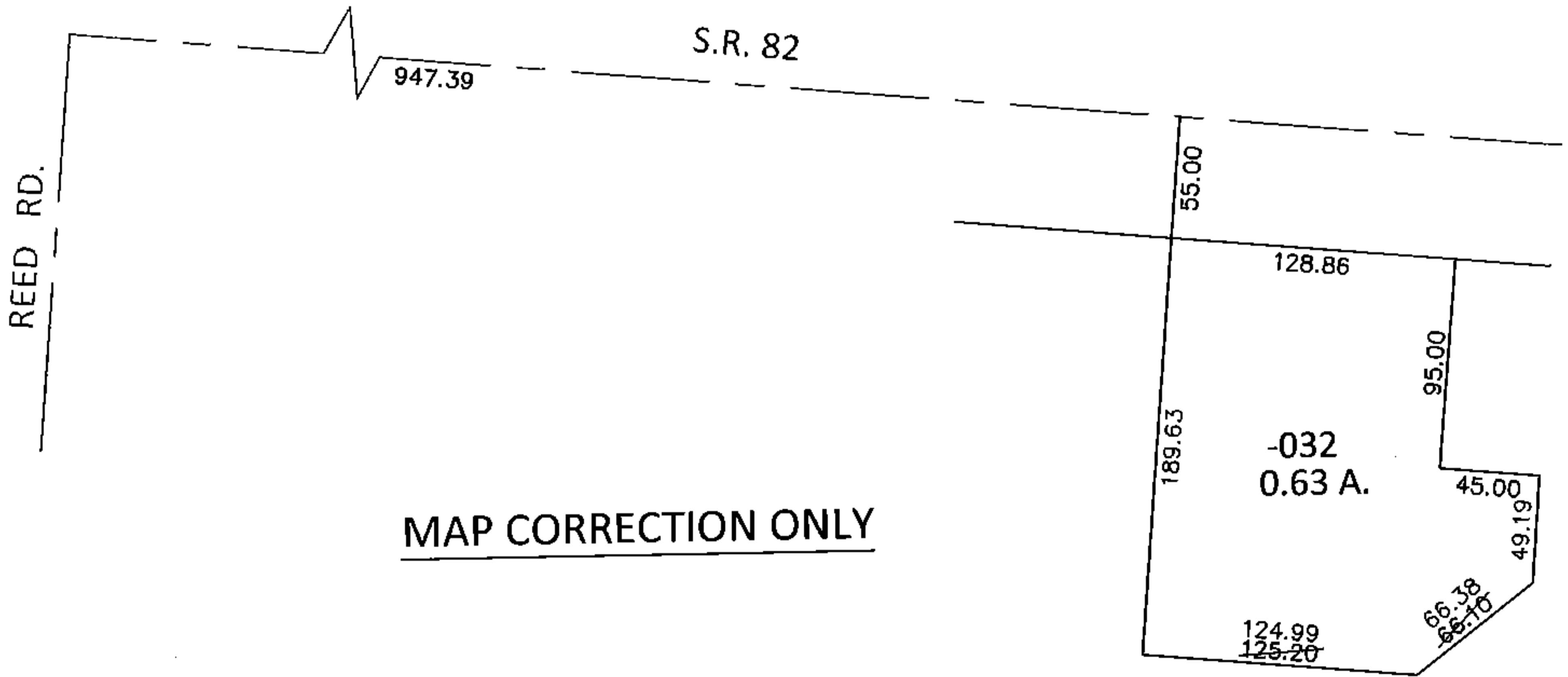
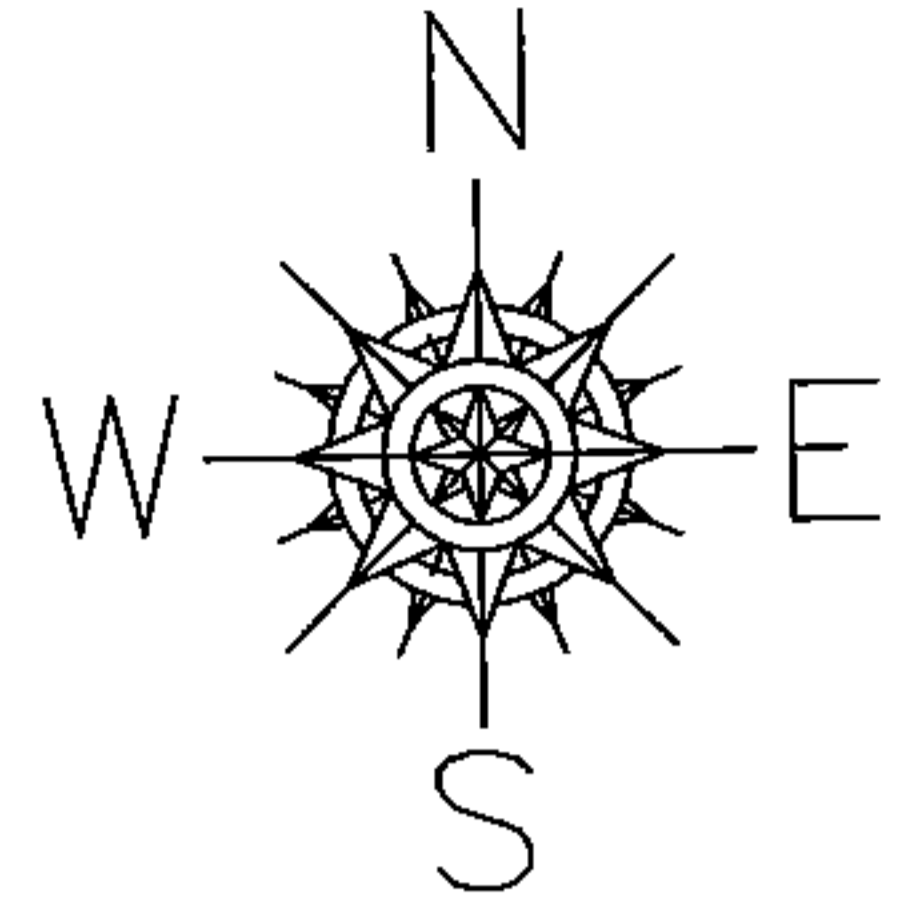


PARENT PARCEL: 11-00-016-000-032

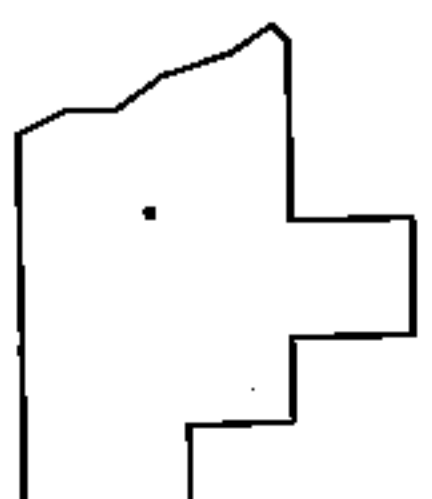
CHILD PARCEL: _____

STARTING POINT: INTERSECTION OF C/L OF S.R.82 AND C/L OF REED RD.

15-03340-D



MAP CORRECTION ONLY



SPLITS/DEEDS PROCESSED

LORAIN COUNTY TAX MAP DEPARTMENT
226 MIDDLE AVE. ELYRIA, OHIO

SURVEYED BY: SCOTT A. CASEY

CLOSURE: .01:10,000

MAP PAGE(S): 11-00-016-A

APPROVED BY: RRM DATE: 12-7-15

SCALE: 1"= 100 PRIOR INST.: 20150561813