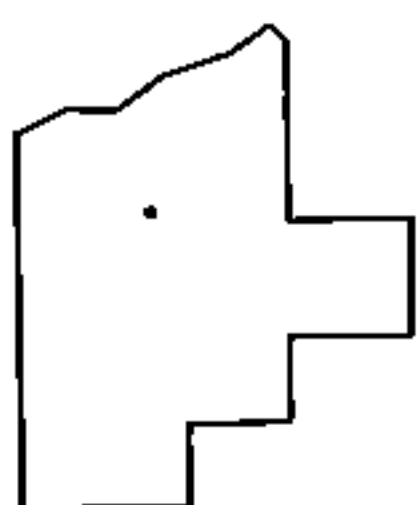
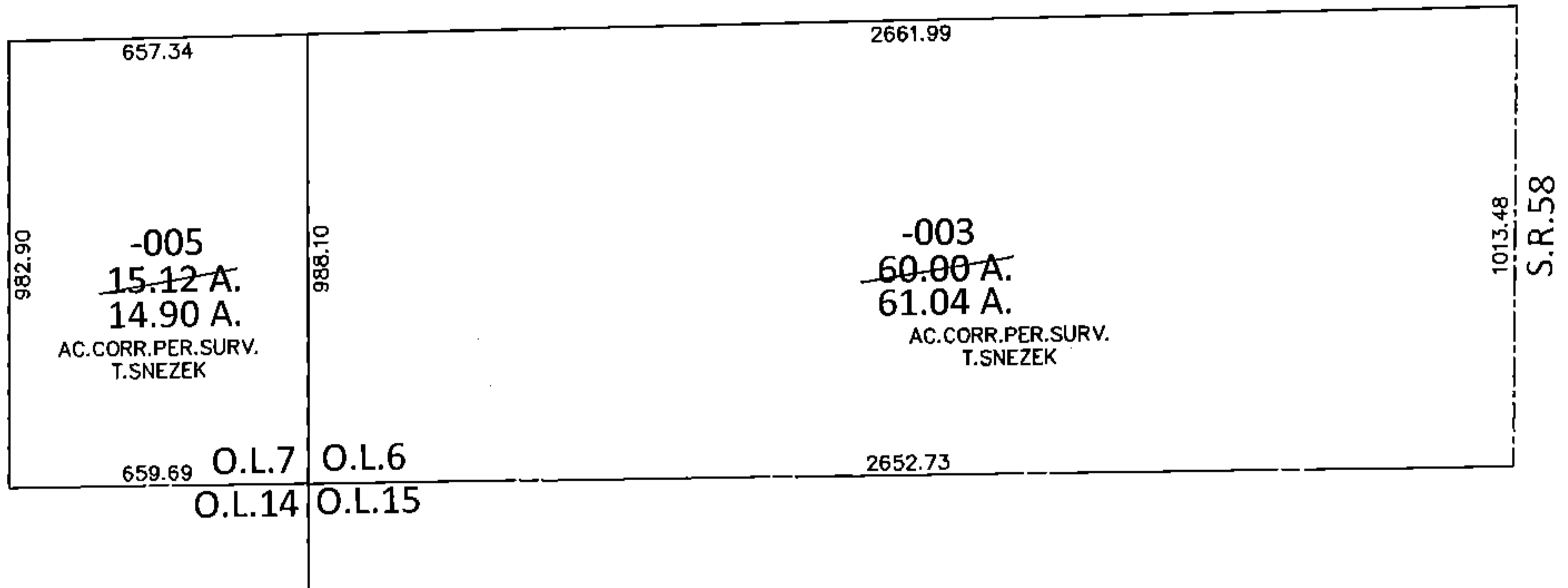
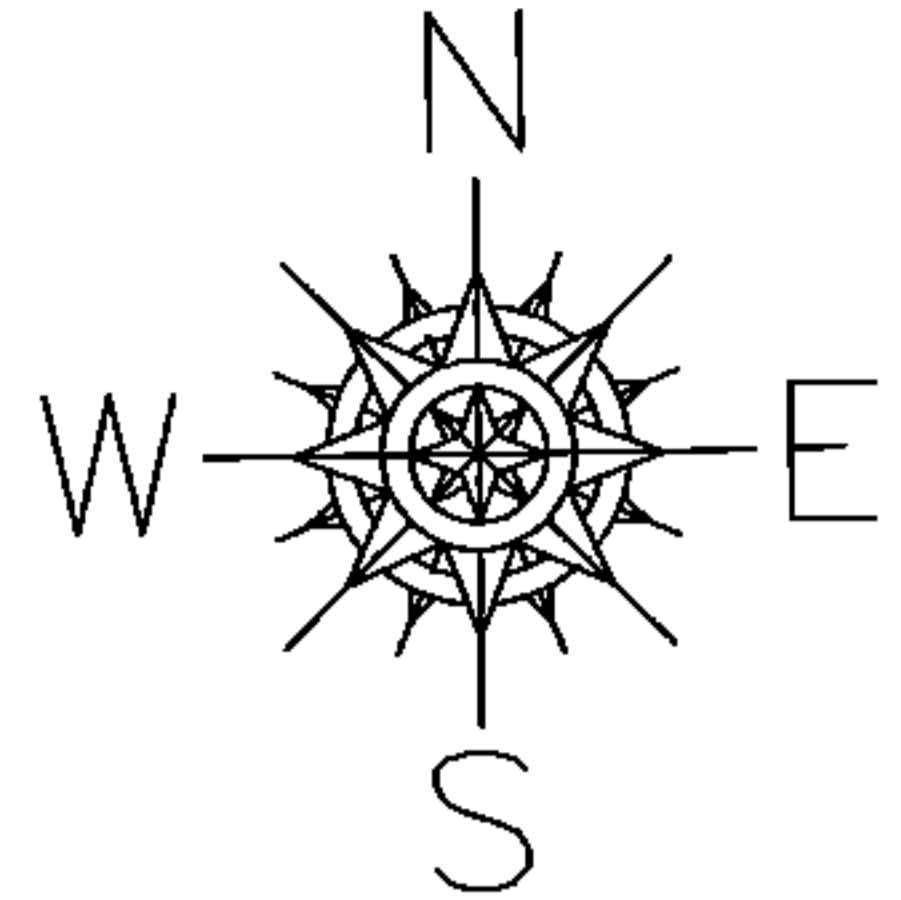


PARENT PARCEL: 14-00-006-000-003, 14-00-007-000-005

CHILD PARCEL: \_\_\_\_\_

STARTING POINT: SOUTHEAST CORNER OF O.L.6

**15-03338-A**



**SPLITS/DEEDS PROCESSED**

LORAIN COUNTY TAX MAP DEPARTMENT  
226 MIDDLE AVE. ELYRIA, OHIO

SURVEYED BY: THOMAS M. SNEZEK

CLOSURE: .01:10,000

MAP PAGE(S): 14-00-006-A&B, 14-00-007-B

APPROVED BY: RRM DATE: 12-4-15

SCALE: 1"= 500 PRIOR INST.: 20130485398