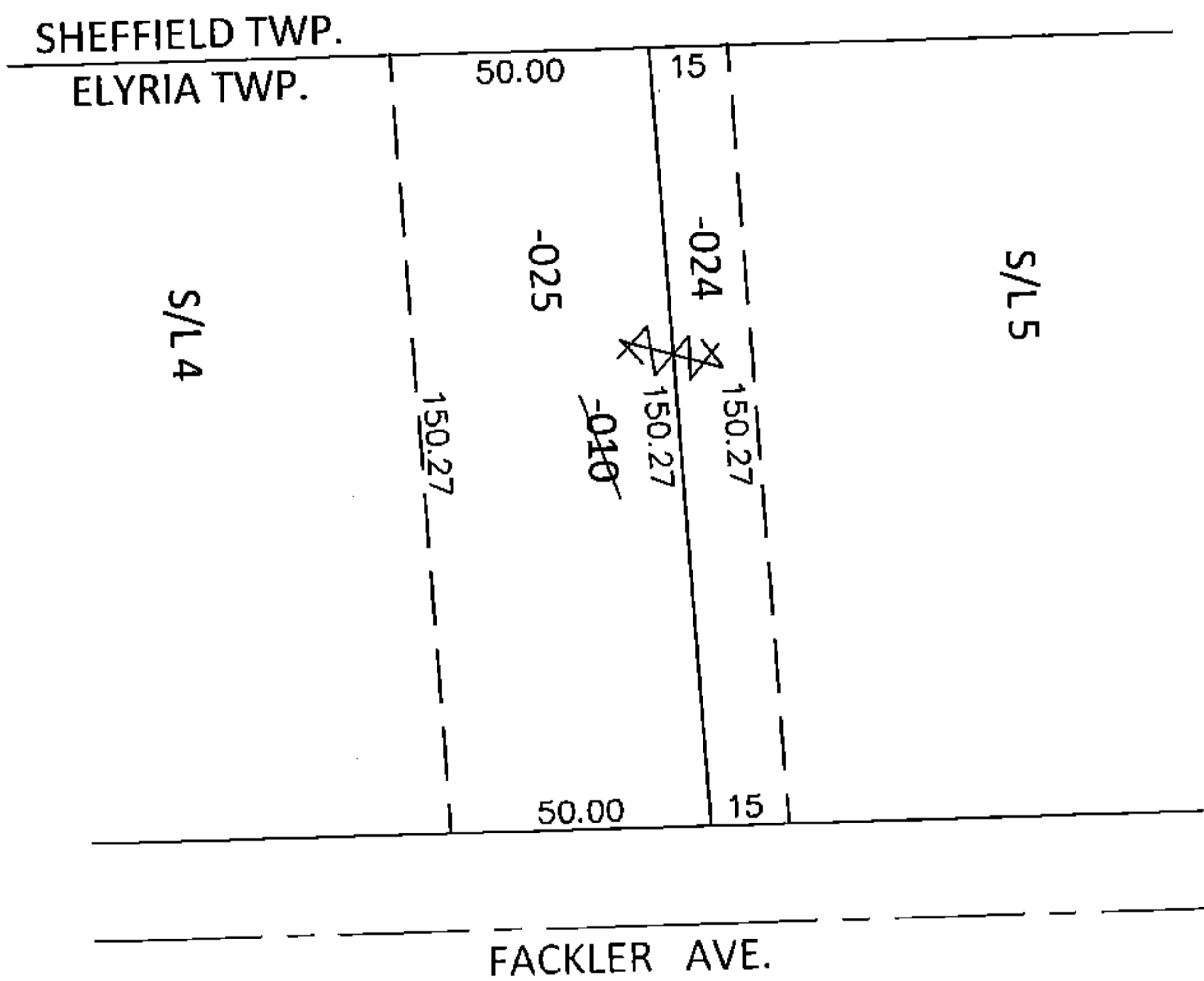
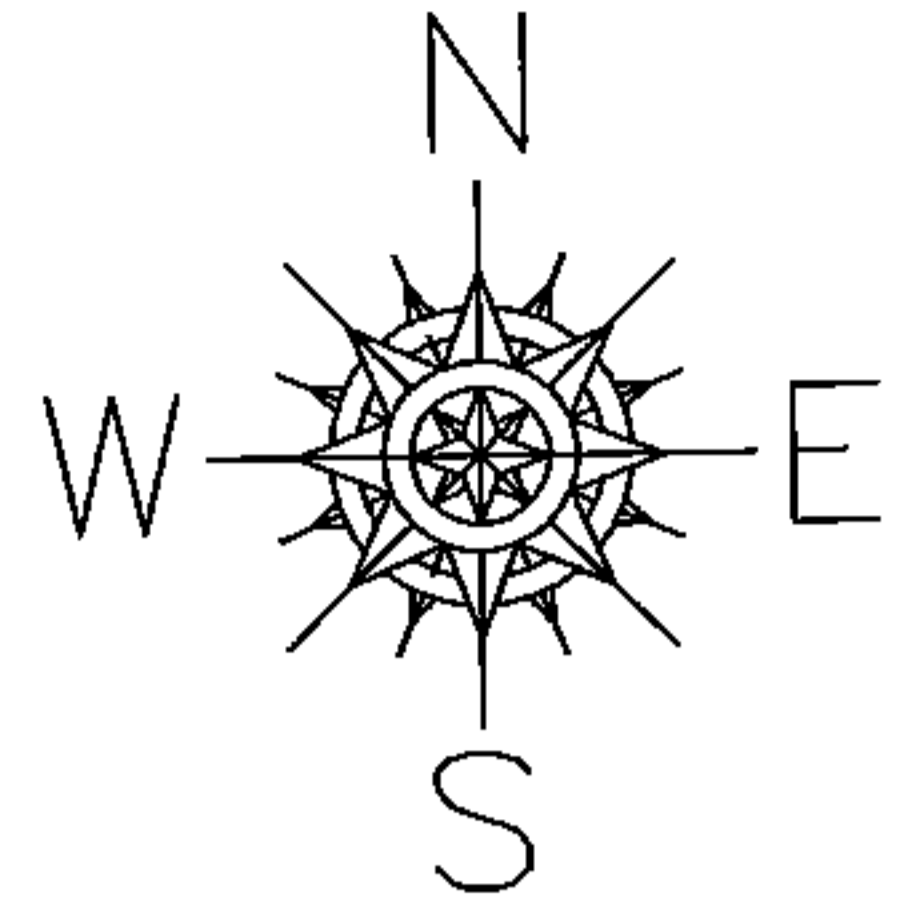


PARENT PARCEL: 06-22-012-101-010
CHILD PARCEL: 06-22-012-101-024, -025
STARTING POINT: SOUTHWESTERLY CORNER OF S/L 4 IN FACKLER'S ALLOT. (VOL.6 PG.5)

15-03337-X



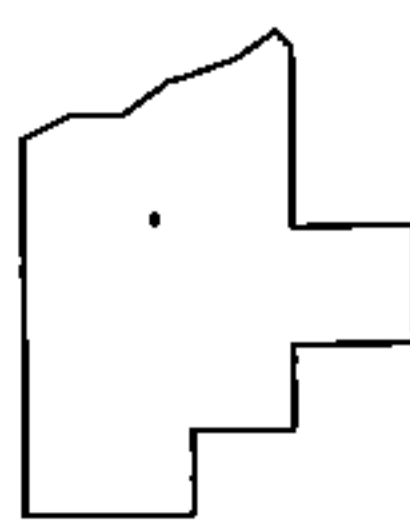
UNCOMBINATION

~~06-22-012-101-010~~
~~65 X 150~~

06-22-012-101-024
15 X 150.27

06-22-012-101-025
50 X 150.27

PER PRIOR DEEDS



SPLITS/DEEDS PROCESSED

LORAIN COUNTY TAX MAP DEPARTMENT
226 MIDDLE AVE. ELYRIA, OHIO

SURVEYED BY: N/A
CLOSURE: .00:10,000
MAP PAGE(S): 6-10
APPROVED BY: RRM DATE: 12-2-15
SCALE: 1"= 50' PRIOR INST.: 20150538164