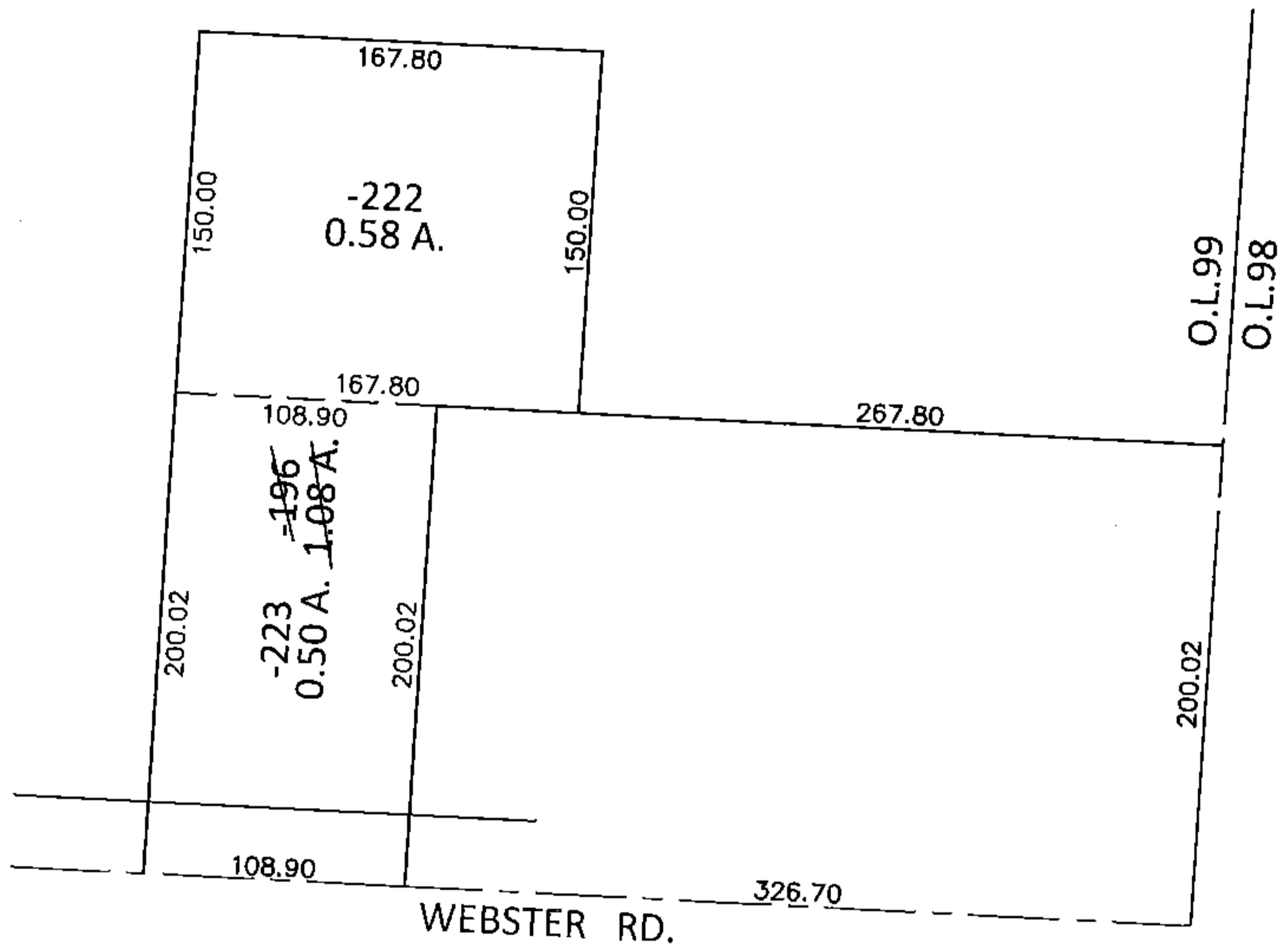
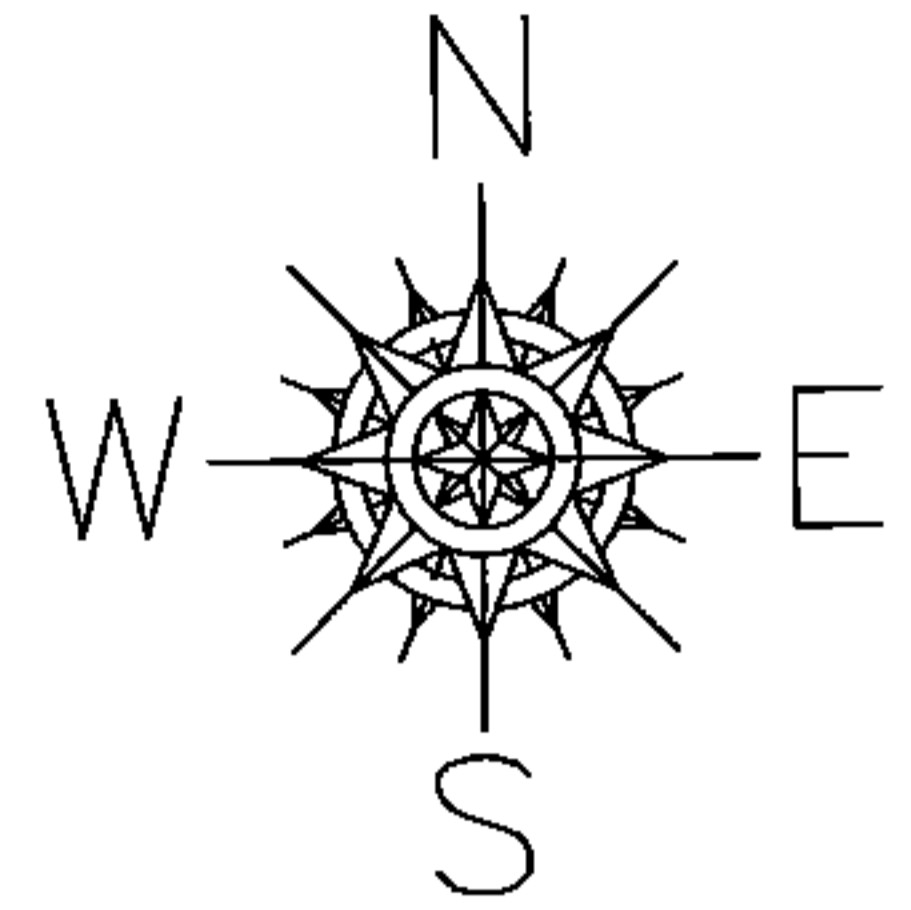


PARENT PARCEL: 15-00-099-101-196
CHILD PARCEL: 15-00-099-101-222, -223
STARTING POINT: INTERSECTION OF C/L OF WEBSTER RD. AND EAST LINE OF O.L.99

15-03334-X



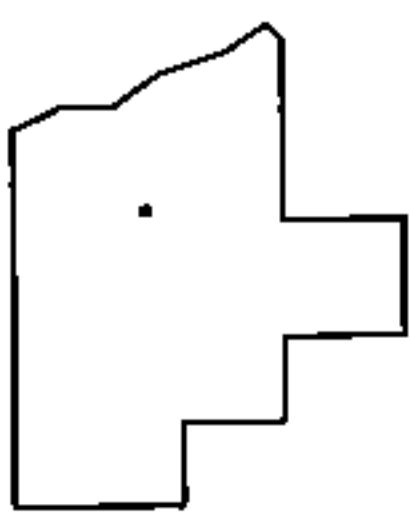
UNCOMBINATION

~~15-00-099-101-196~~
~~1.08 A.~~

15-00-099-101-222
0.58 A.

15-00-099-101-223
0.50 A.

PER PRIOR DEEDS



SPLITS/DEEDS PROCESSED
LORAIN COUNTY TAX MAP DEPARTMENT
226 MIDDLE AVE. ELYRIA, OHIO

SURVEYED BY: N/A
CLOSURE: .00:10,000
MAP PAGE(S): 15-00-099-B
APPROVED BY: RRM DATE: 11-18-15
SCALE: 1"= 100 PRIOR INST.: 20150556107