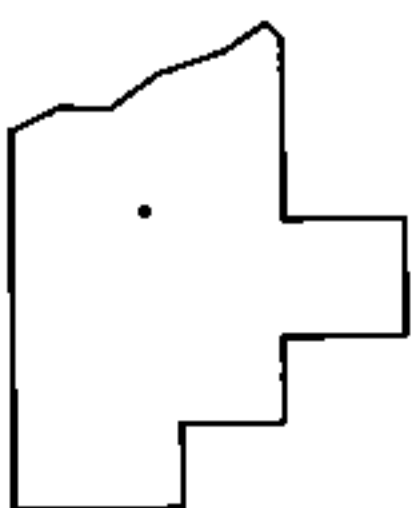
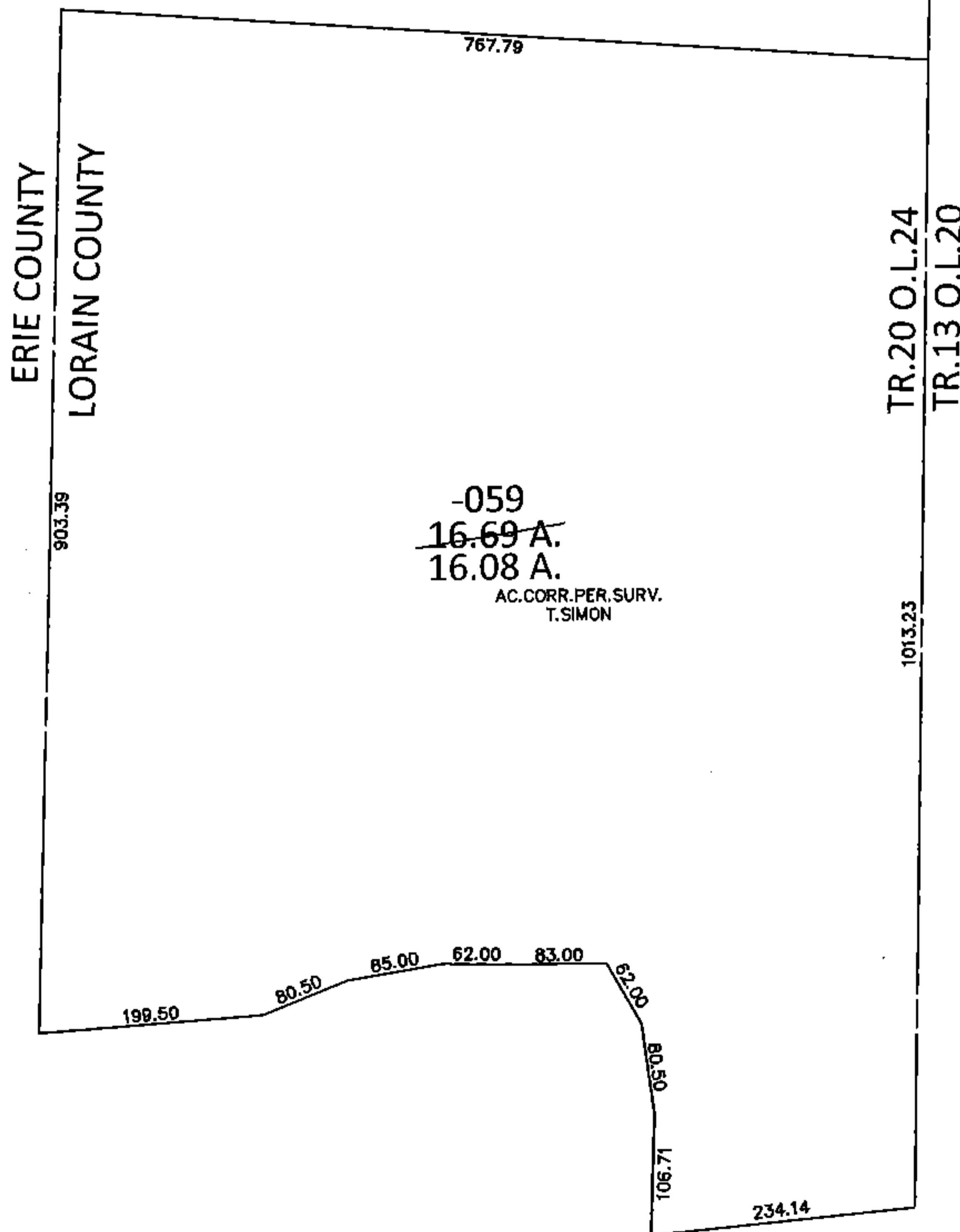
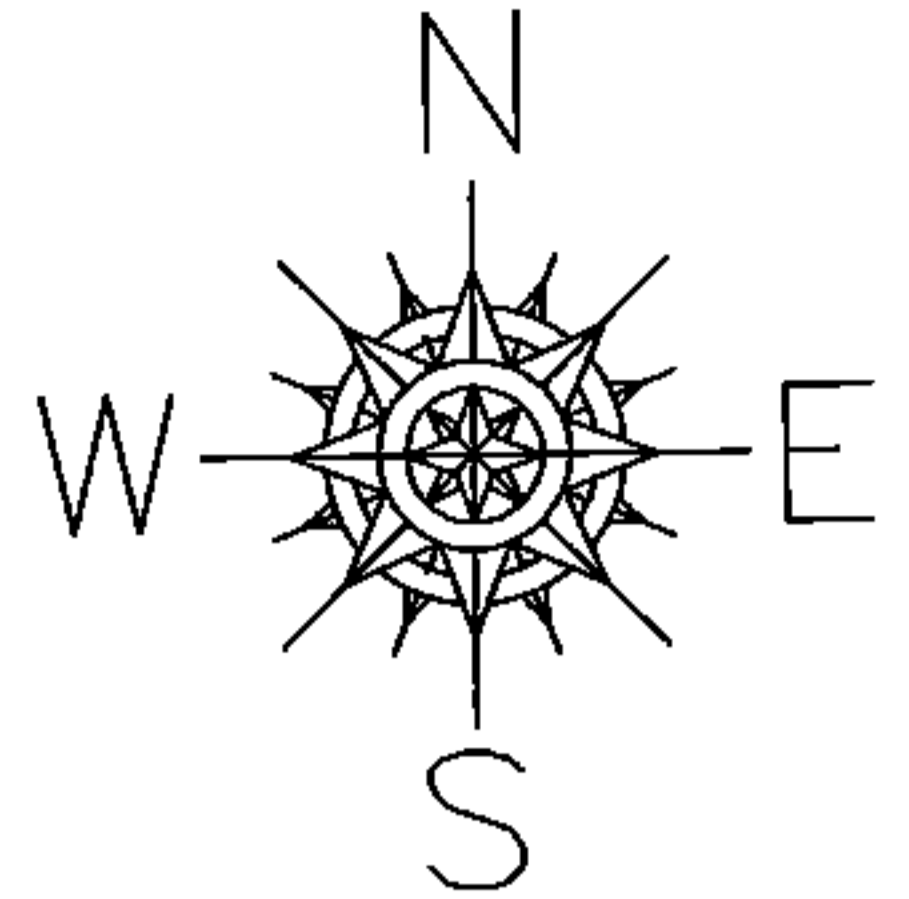


PARENT PARCEL: 08-20-024-000-059

CHILD PARCEL: _____

STARTING POINT: SOUTHEAST CORNER OF LAND CONVEYED HEART OF OHIO COUNCIL (OR 974/917)

15-03332-A



SPLITS/DEEDS PROCESSED

LORAIN COUNTY TAX MAP DEPARTMENT
226 MIDDLE AVE. ELYRIA, OHIO

SURVEYED BY: THOMAS A. SIMON

CLOSURE: .01:10,000

MAP PAGE(S): 8-E

APPROVED BY: RRM DATE: 11-9-15

SCALE: 1"= 200 PRIOR INST.: 20150565203