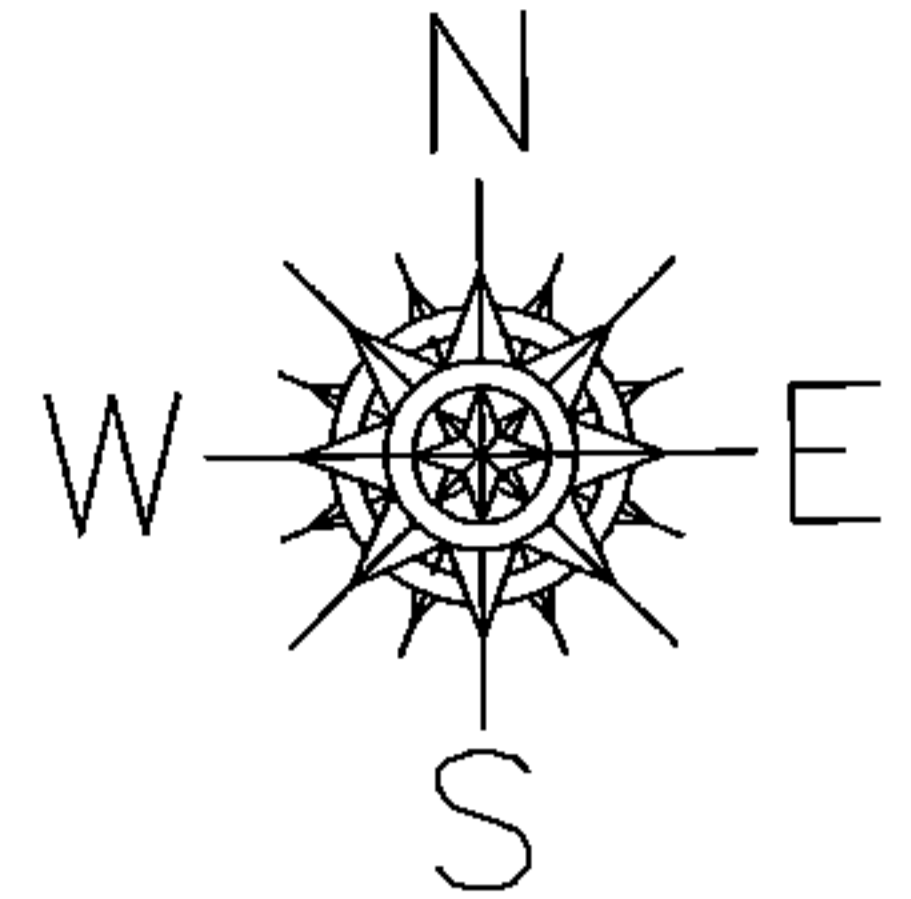


PARENT PARCEL: 02-00-051-101-025

CHILD PARCEL:

STARTING POINT: INTERSECTION OF C/L OF E.ERIE AVE. AND EAST LINE OF O.L.51

15-03331-C



LOW WATER MARK

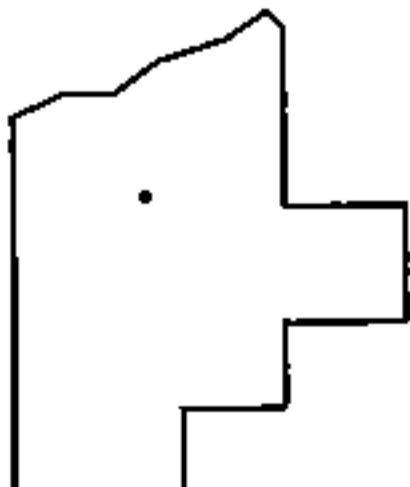
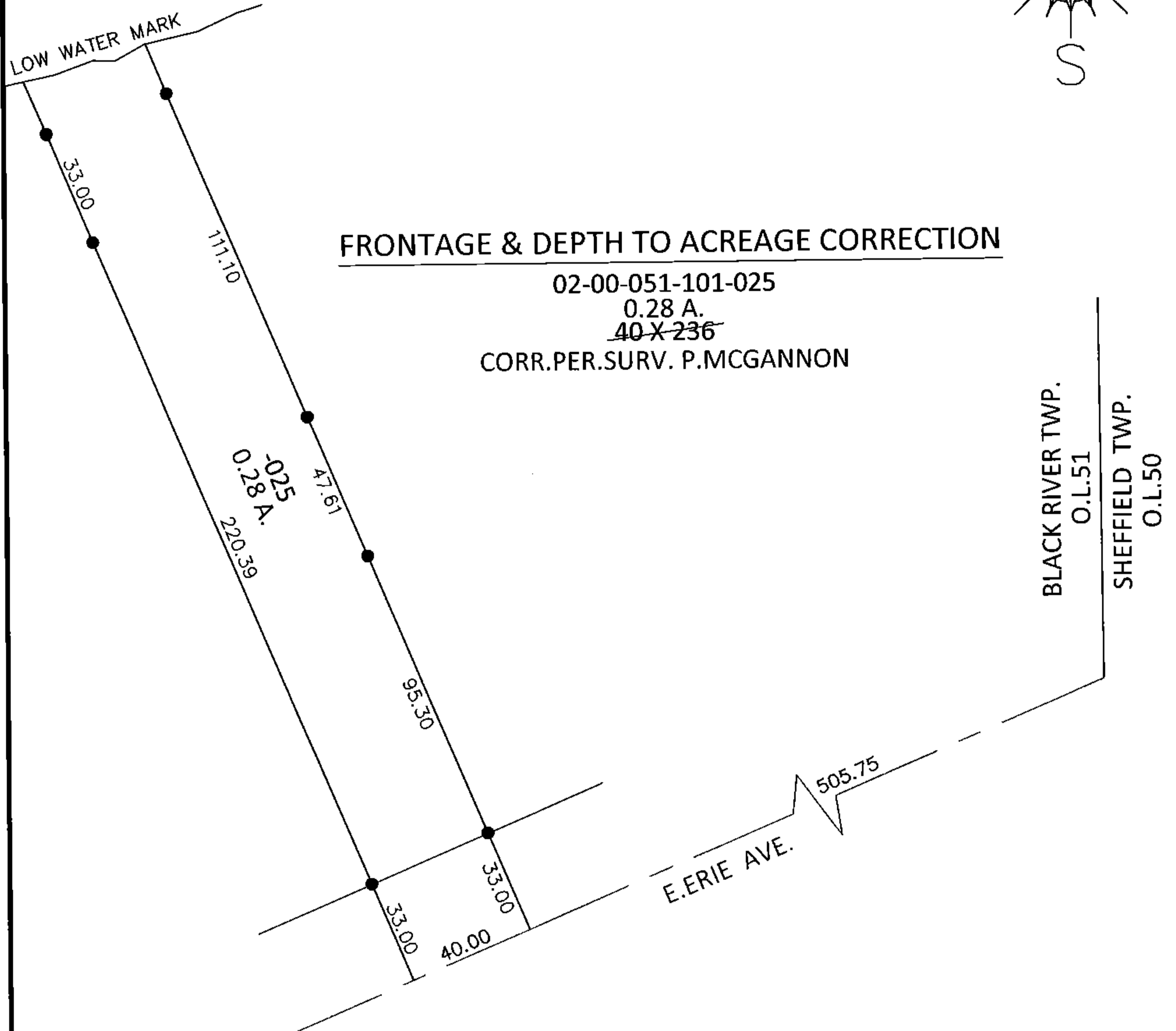
FRONTAGE & DEPTH TO ACREAGE CORRECTION

02-00-051-101-025

0.28 A.

~~40 X 236~~

CORR.PER.SURV. P.MCGANNON



SPLITS/DEEDS PROCESSED

LORAIN COUNTY TAX MAP DEPARTMENT  
226 MIDDLE AVE. ELYRIA, OHIO

SURVEYED BY: PATRICK A. MCGANNON

CLOSURE: N/A

MAP PAGE(S): 2-00-051-A

APPROVED BY: RRM DATE: 11-6-15

SCALE: 1" = 50' PRIOR INST.: 20100349518