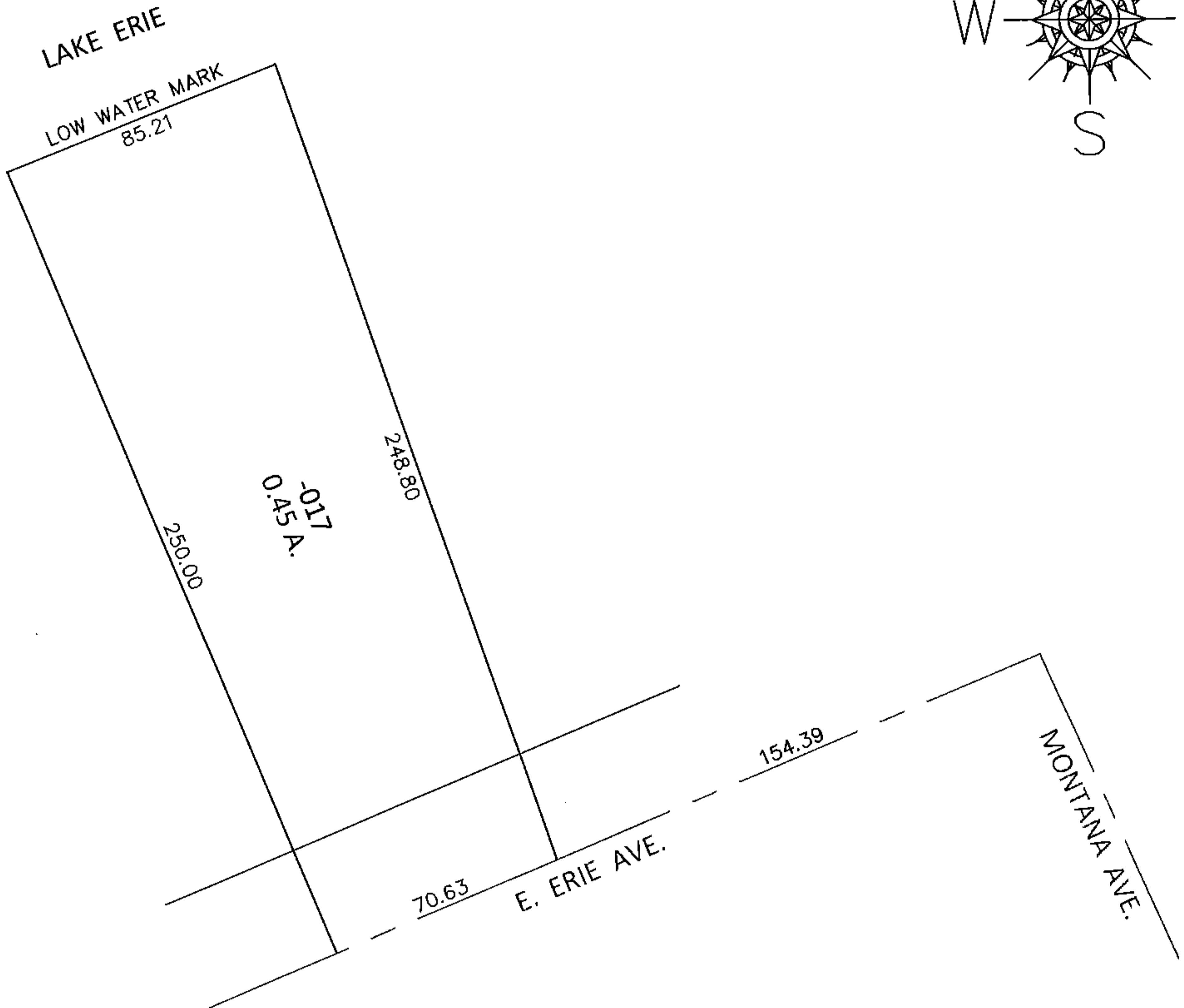
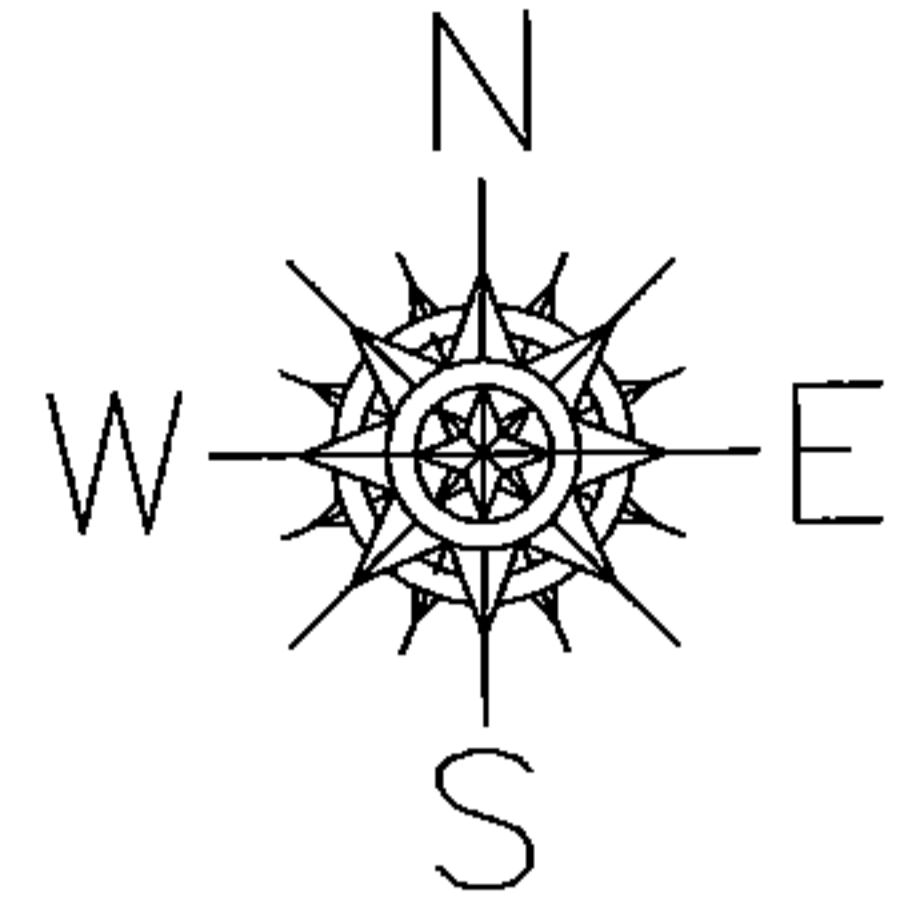


PARENT PARCEL: 03-00-049-101-017

CHILD PARCEL: _____

STARTING POINT: INTERSECTION OF C/L OF E.ERIE AVE. AND C/L OF MONTANA AVE.

15-03330-D



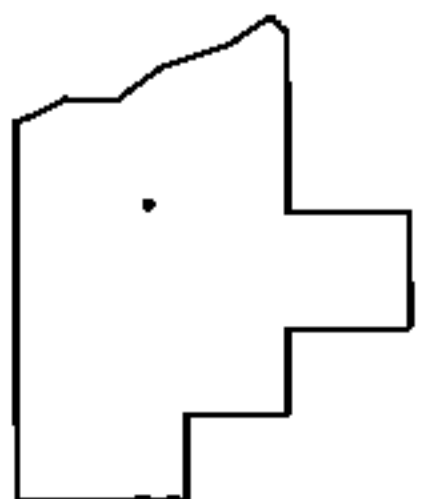
FRONTAGE & DEPTH TO ACREAGE CORRECTION

03-00-049-101-017

0.45 A.

~~71.50 X~~

AC.CORR.PER.SURV. B.ANDERSON



SPLITS/DEEDS PROCESSED

LORAIN COUNTY TAX MAP DEPARTMENT
226 MIDDLE AVE. ELYRIA, OHIO

SURVEYED BY: BRENT D. ANDERSON

CLOSURE: .01:10,000

MAP PAGE(S): 3-00-049-A

APPROVED BY: RRM DATE: 11-4-15

SCALE: 1"= 50' PRIOR INST.: 20140520941