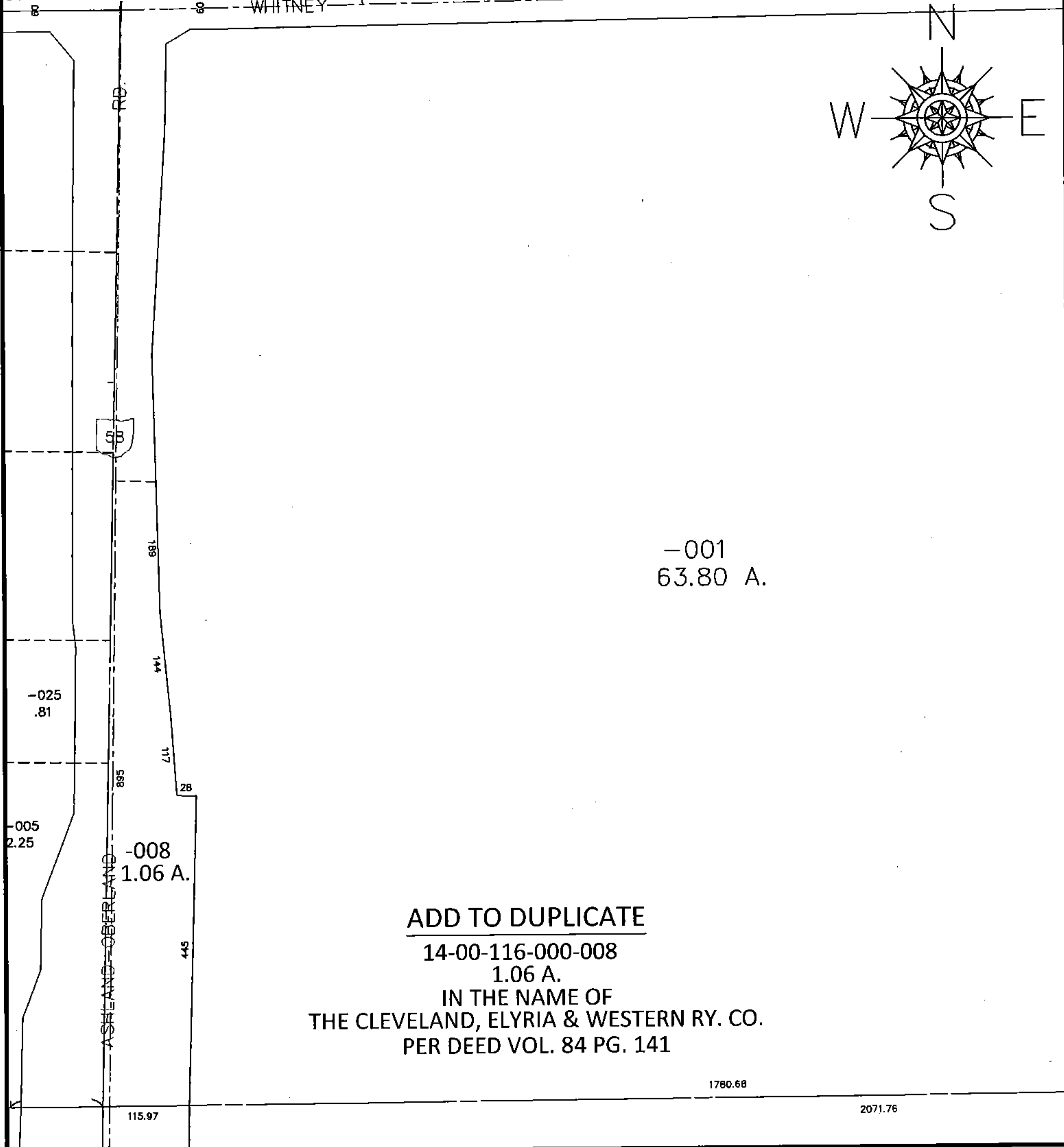


PARENT PARCEL: 14-00-116-000-001

CHILD PARCEL: 14-00-116-000-008

15-03318-X

STARTING POINT:



-001
63.80 A.

-025
.81

-005
2.25

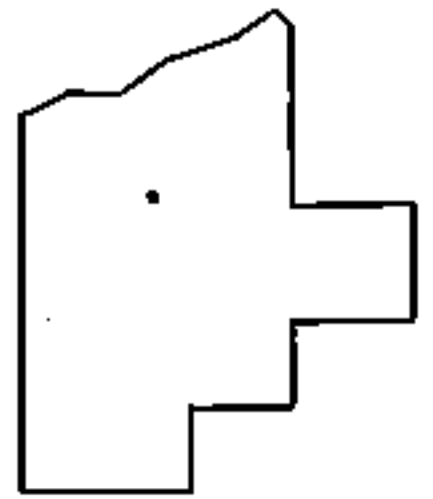
-008
1.06 A.

ADD TO DUPLICATE
 14-00-116-000-008
 1.06 A.
 IN THE NAME OF
 THE CLEVELAND, ELYRIA & WESTERN RY. CO.
 PER DEED VOL. 84 PG. 141

1780.68

2071.76

115.97



SPLITS/DEEDS PROCESSED

LORAIN COUNTY TAX MAP DEPARTMENT
 226 MIDDLE AVE. ELYRIA, OHIO

SURVEYED BY: N/A
 CLOSURE: N/A
 MAP PAGE(S): 14-G
 APPROVED BY: RRM DATE: 10-16-15
 SCALE: 1" = 200 PRIOR INST.: DV 84/141