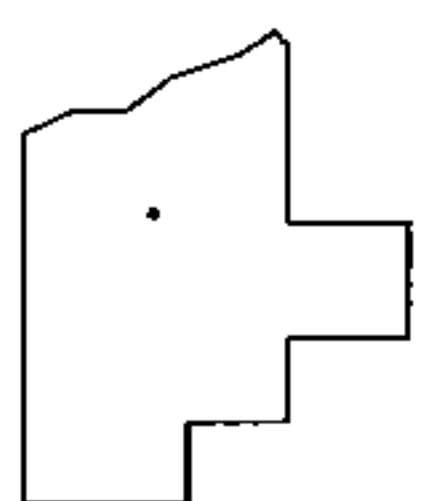
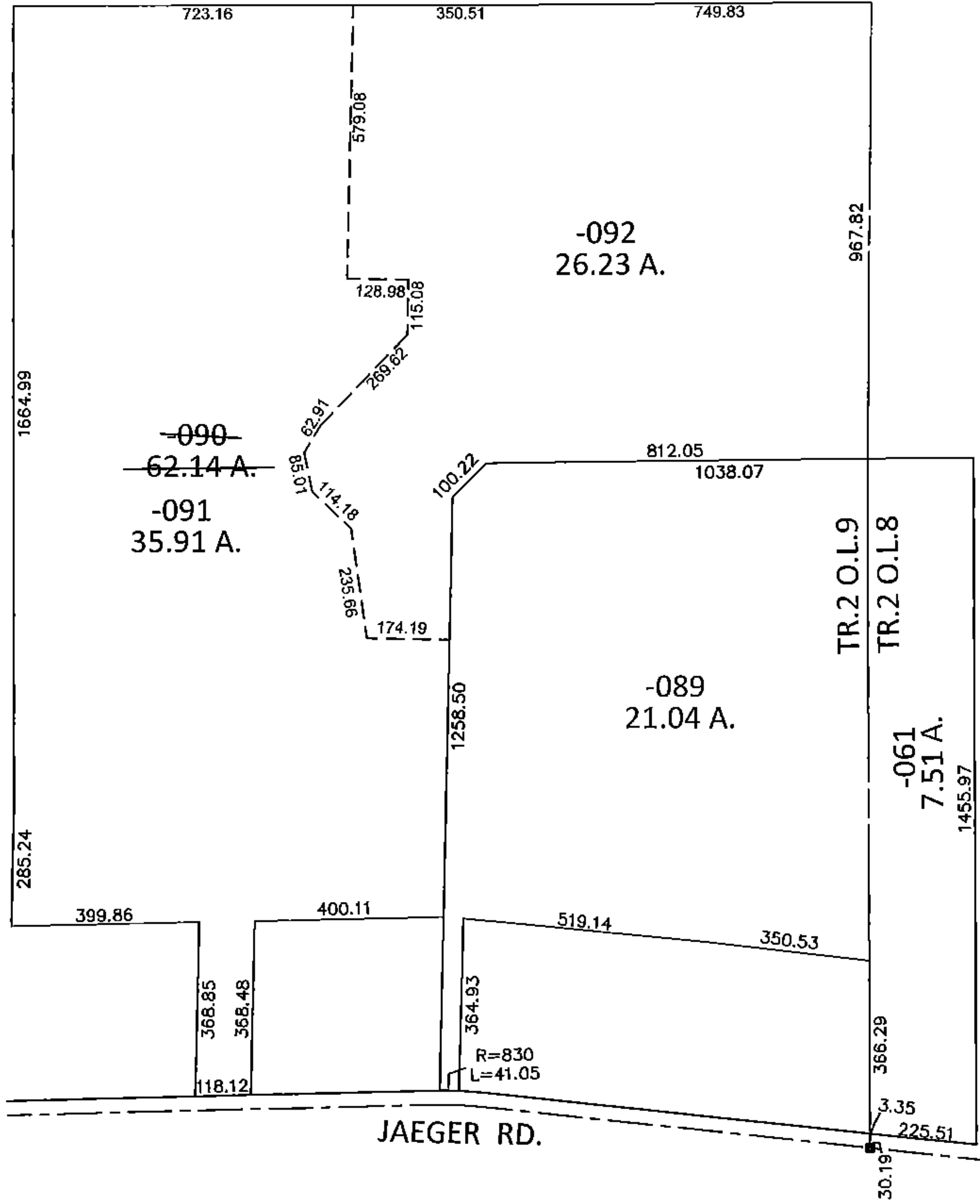
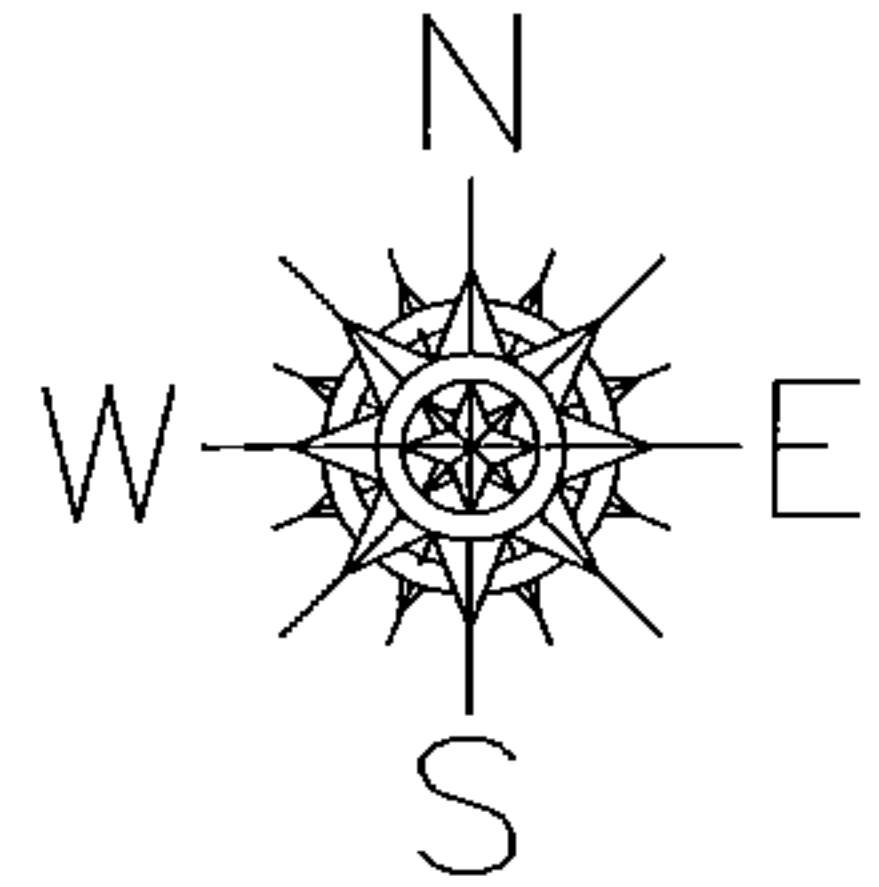


PARENT PARCEL: 02-02-009-101-090
 CHILD PARCEL: 02-02-009-101-091, -092
 STARTING POINT: AT A MON BOX AT THE INTERSECTION OF C/L OF JAEGER RD. AND EAST LINE OF O.L.9

14-03317



SPLITS/DEEDS PROCESSED
 LORAIN COUNTY TAX MAP DEPARTMENT
 226 MIDDLE AVE. ELYRIA, OHIO

SURVEYED BY: TREVOR A. BIXLER
 CLOSURE: .01:10,000
 MAP PAGE(S): 2-02-009-B
 APPROVED BY: JAH DATE: 12/9/2014
 SCALE: 1"=400 PRIOR INST.: 20140527331