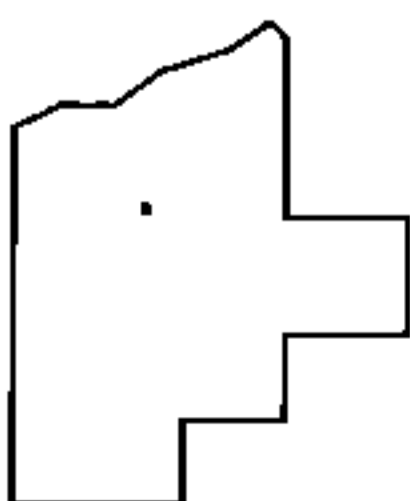
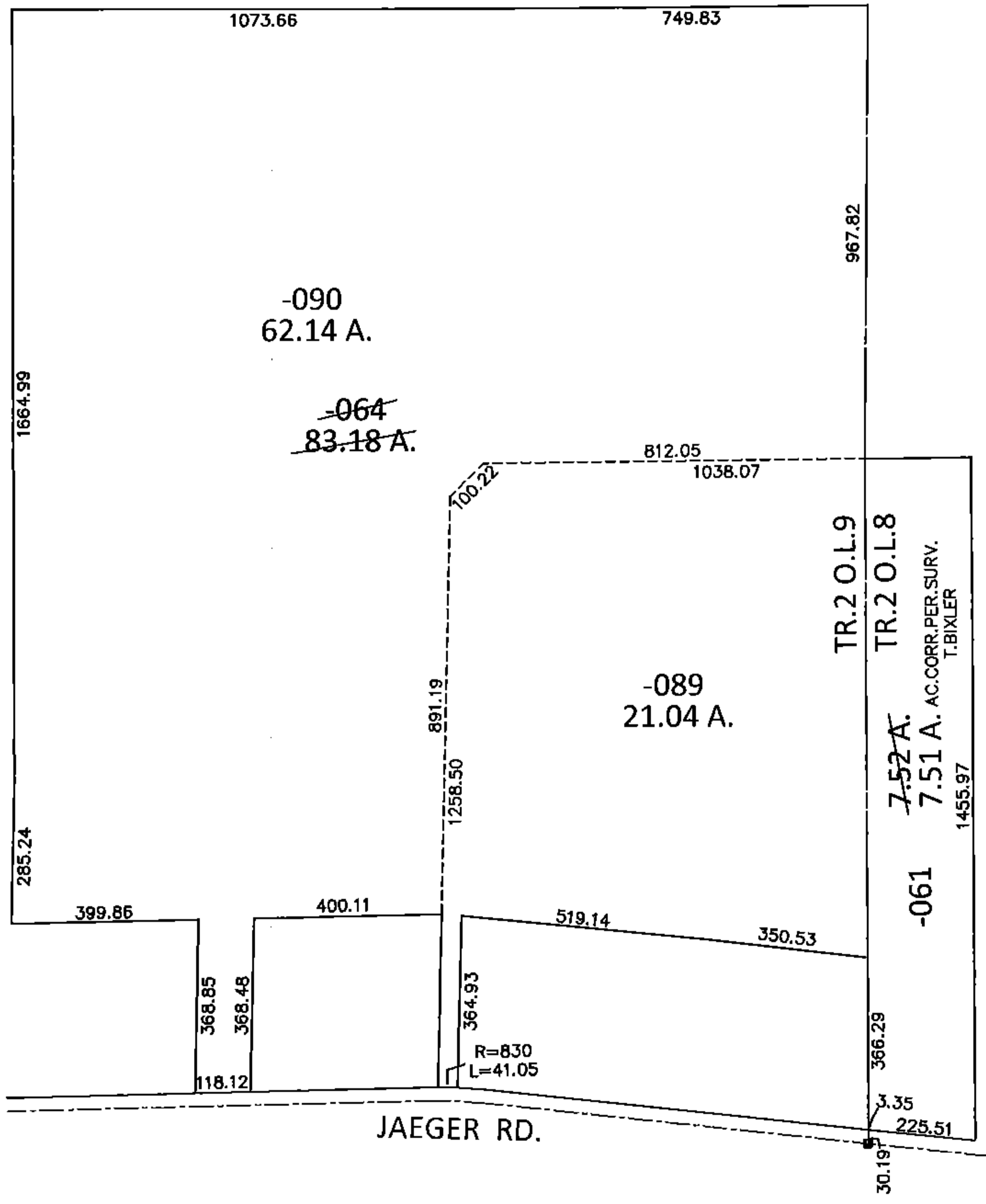
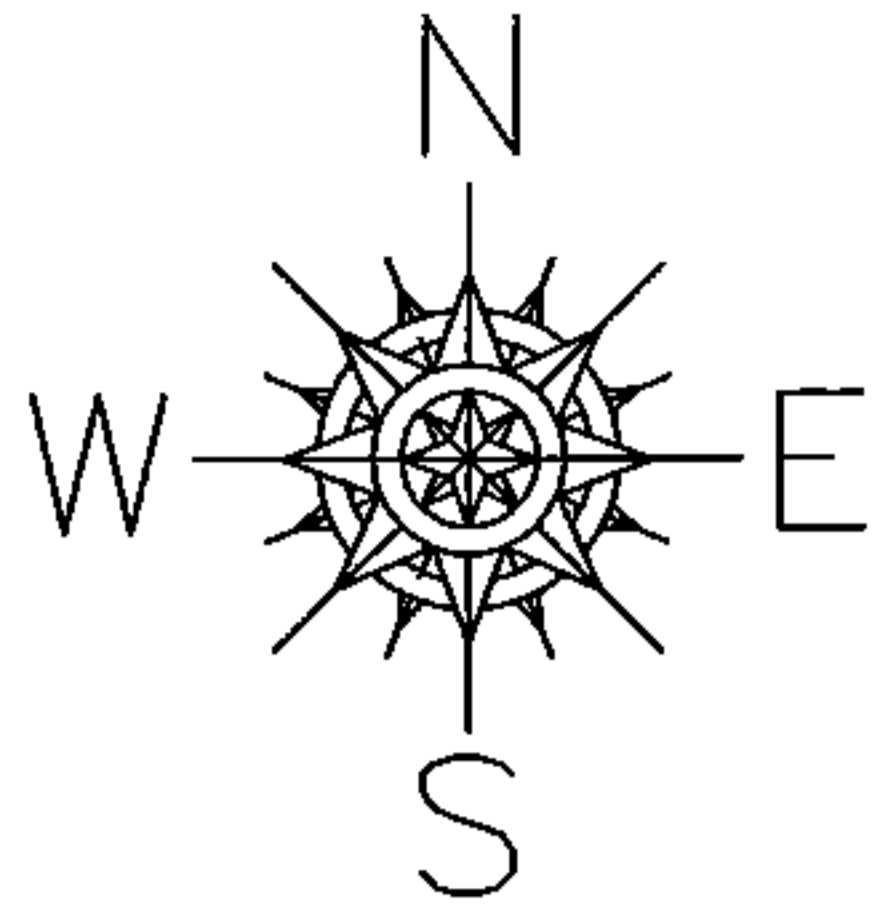


PARENT PARCEL: 02-02-008-107-061, 02-02-009-101-064  
 CHILD PARCEL: 02-02-008-107-061, 02-02-009-101-089, -090  
 STARTING POINT: AT A MON BOX AT THE INTERSECTION OF C/L OF JAEGER RD. AND EAST LINE OF O.L.9

**14-03315**



**SPLITS/DEEDS PROCESSED**  
 LORAIN COUNTY TAX MAP DEPARTMENT  
 226 MIDDLE AVE. ELYRIA, OHIO

SURVEYED BY: TREVOR A. BIXLER  
 CLOSURE: .01:10.000  
 MAP PAGE(S): 2-02-009-B  
 APPROVED BY: RRM DATE: 11-25-14  
 SCALE: 1"=400 PRIOR INST.: 20120400251