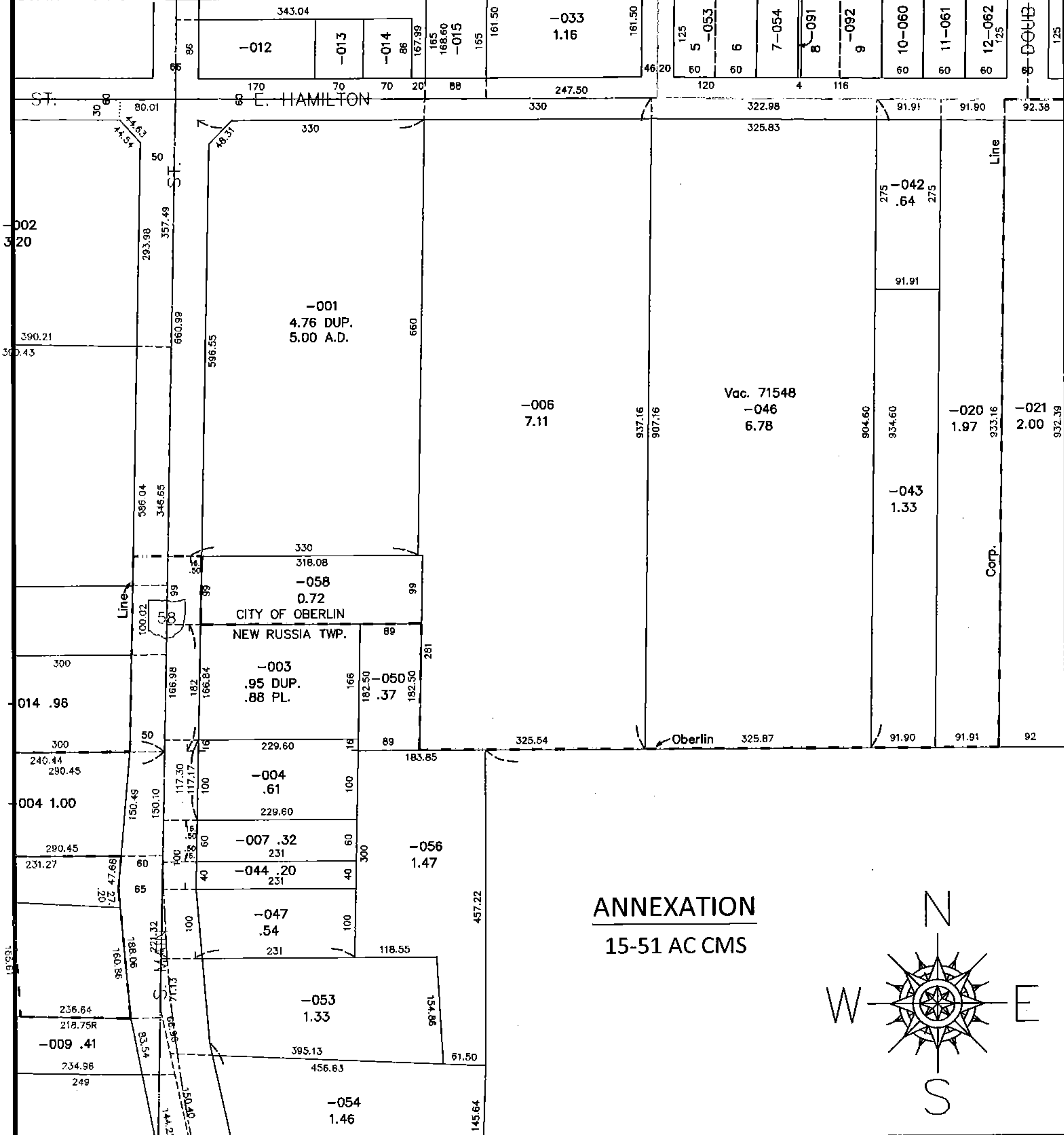


PARENT PARCEL: 09-00-106-000-058

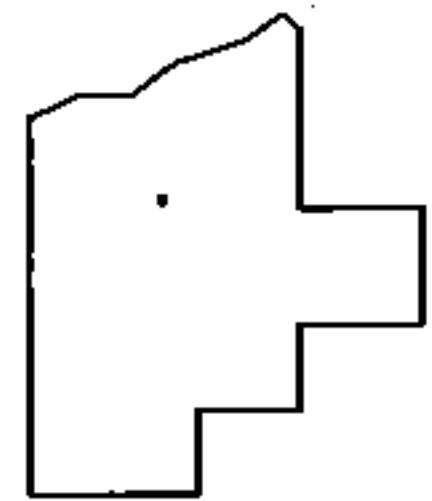
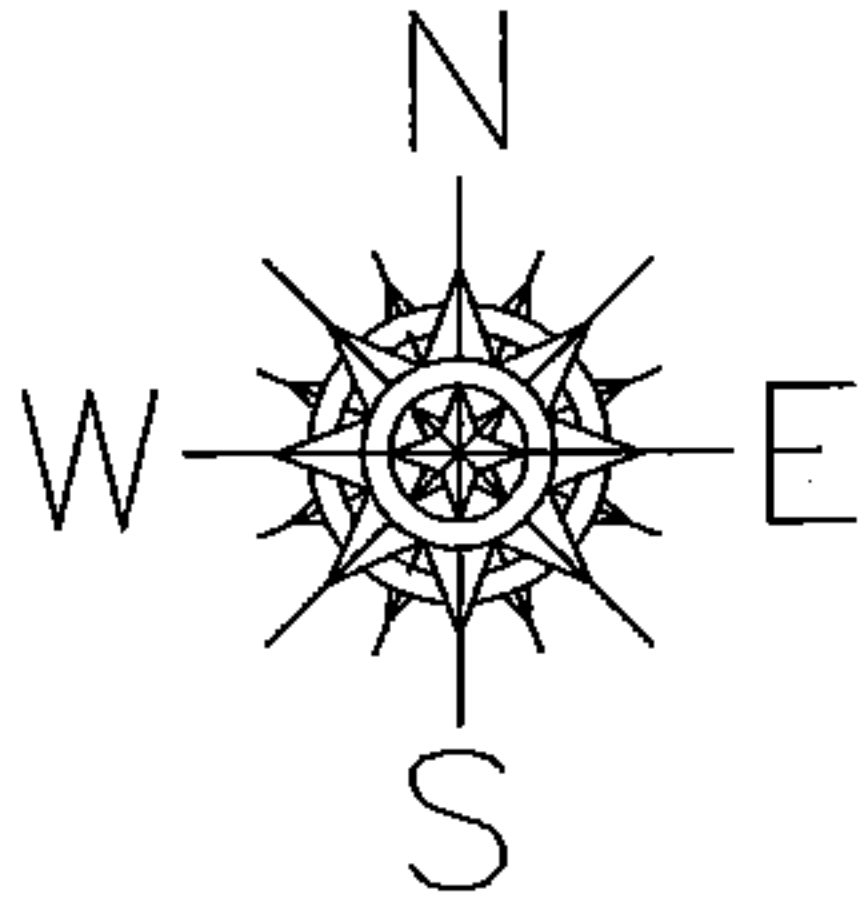
15-03311-X

CHILD PARCEL:

STARTING POINT:



ANNEXATION  
15-51 AC CMS



**SPLITS/DEEDS PROCESSED**

LORAIN COUNTY TAX MAP DEPARTMENT  
226 MIDDLE AVE. ELYRIA, OHIO

SURVEYED BY: THOMAS A. SIMON  
 CLOSURE: .00:10,000  
 MAP PAGE(S): 9-00-106-B  
 APPROVED BY: RRM DATE: 10-13-15  
 SCALE: 1"= 200 PRIOR INST.: \_\_\_\_\_